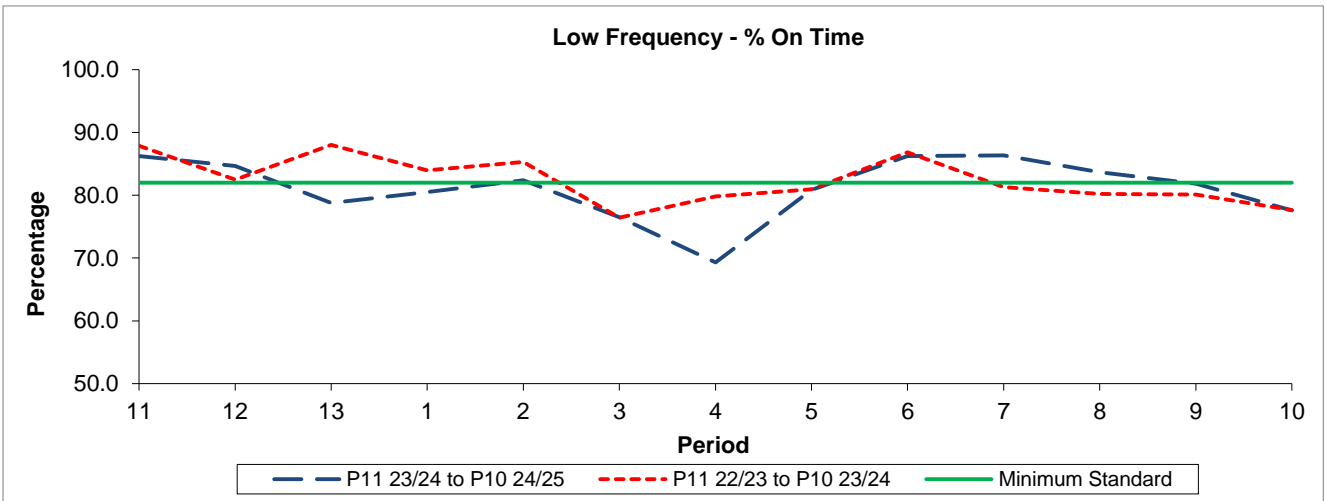


QSI & Mileage Performance Results

# Route N109

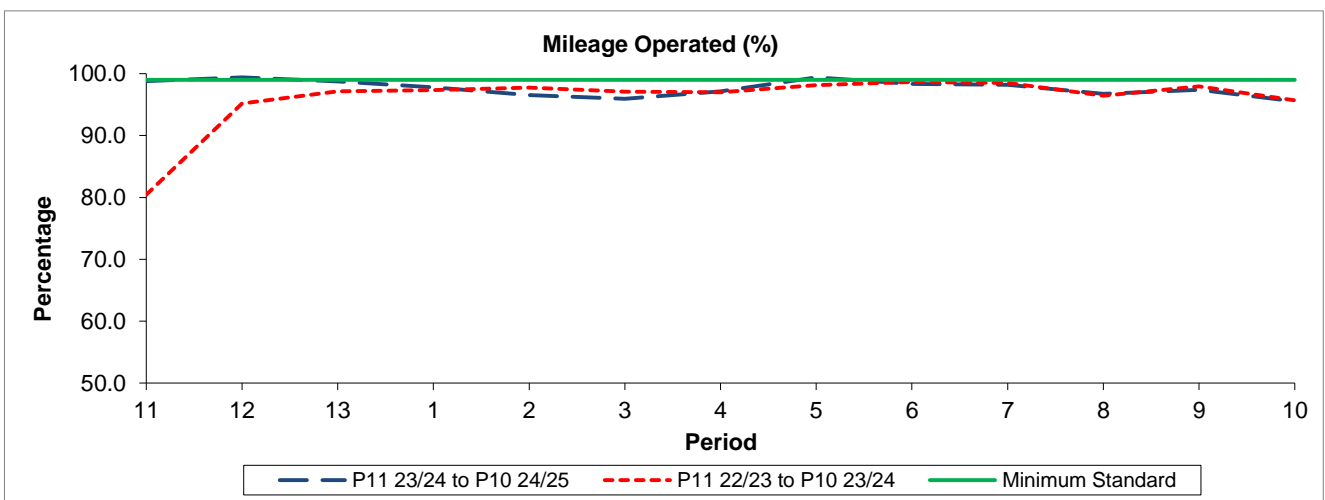
## Reliability Performance



Period	11	12	13	1	2	3	4	5	6	7	8	9	10
P11 23/24 to P10 24/25	86.24	84.65	78.77	80.48	82.38	76.49	69.30	80.86	86.23	86.35	83.67	81.86	77.57
P11 22/23 to P10 23/24	87.85	82.49	88.01	83.94	85.31	76.43	79.83	80.95	86.84	81.29	80.19	80.10	77.65
Minimum Standard	82.00	82.00	82.00	82.00	82.00	82.00	82.00	82.00	82.00	82.00	82.00	82.00	82.00

% On Time performance figures are based on four weeks data

## Mileage Performance



Period	11	12	13	1	2	3	4	5	6	7	8	9	10
P11 23/24 to P10 24/25	98.82	99.39	98.73	97.79	96.56	95.96	97.12	99.39	98.35	98.20	96.76	97.39	95.53
P11 22/23 to P10 23/24	80.44	95.19	97.16	97.34	97.75	97.07	97.00	98.12	98.66	98.48	96.42	97.96	95.69
Minimum Standard	99.00	99.00	99.00	99.00	99.00	99.00	99.00	99.00	99.00	99.00	99.00	99.00	99.00

Mileage Performance figures are based on four weeks data