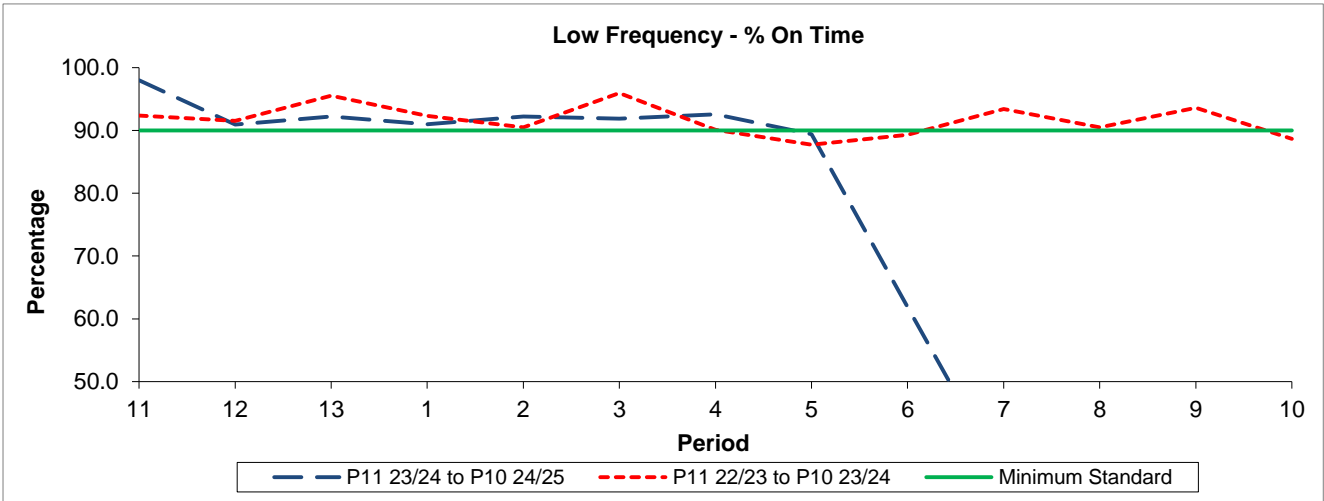


QSI & Mileage Performance Results

Route N105

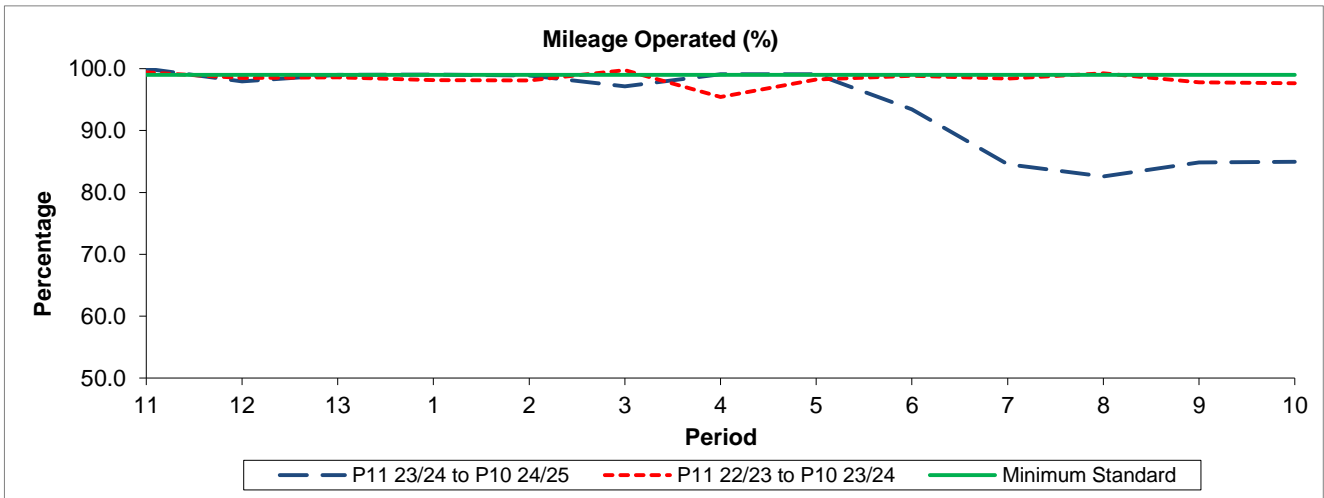
Reliability Performance



Period	11	12	13	1	2	3	4	5	6	7	8	9	10
P11 23/24 to P10 24/25	97.99	90.94	92.24	91.00	92.20	91.88	92.57	89.38	61.93	34.53	40.30	46.32	39.23
P11 22/23 to P10 23/24	92.38	91.51	95.53	92.32	90.50	95.95	90.09	87.73	89.32	93.41	90.49	93.61	88.67
Minimum Standard	90.00	90.00	90.00	90.00	90.00	90.00	90.00	90.00	90.00	90.00	90.00	90.00	90.00

% On Time performance figures are based on four weeks data

Mileage Performance



Period	11	12	13	1	2	3	4	5	6	7	8	9	10
P11 23/24 to P10 24/25	100.00	97.93	99.00	99.06	98.87	97.14	99.12	99.07	93.44	84.56	82.58	84.87	84.92
P11 22/23 to P10 23/24	99.41	98.51	98.58	98.15	98.10	99.76	95.43	98.22	98.82	98.40	99.25	97.78	97.65
Minimum Standard	99.00	99.00	99.00	99.00	99.00	99.00	99.00	99.00	99.00	99.00	99.00	99.00	99.00

Mileage Performance figures are based on four weeks data