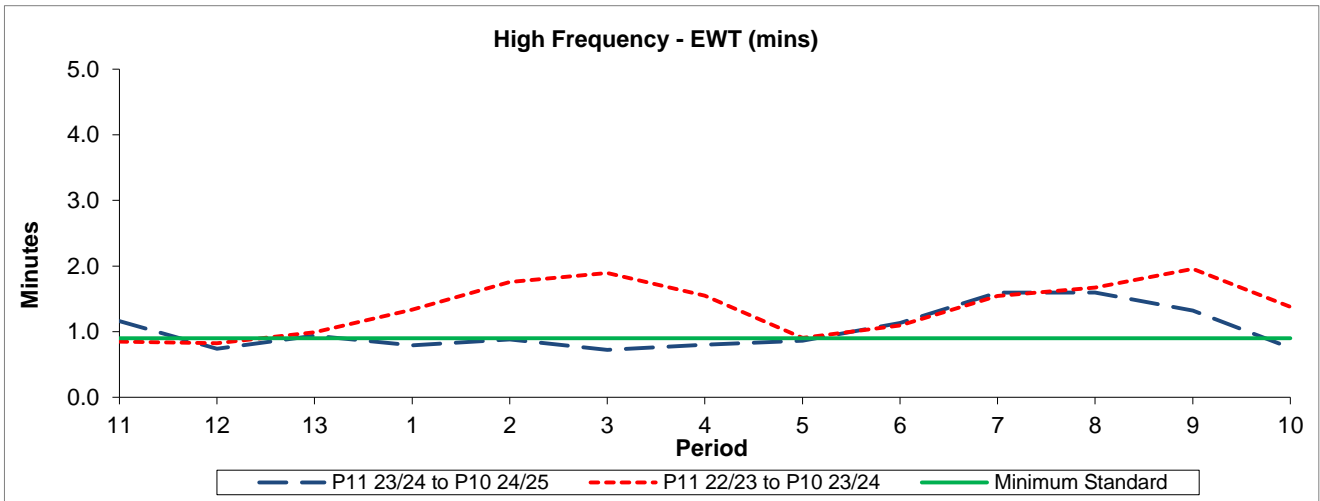


QSI & Mileage Performance Results

# Route K2

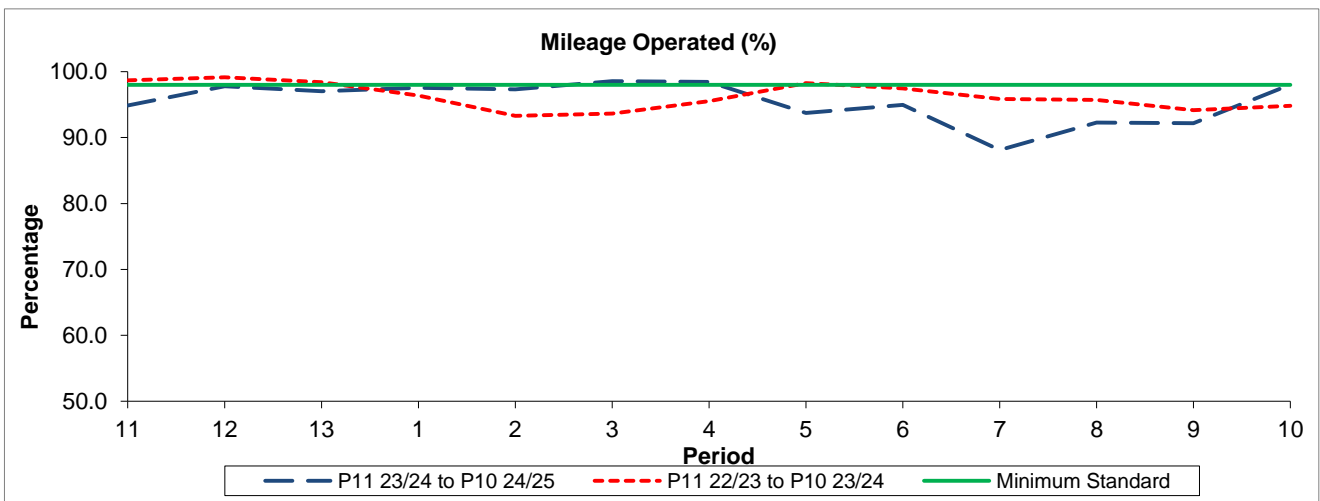
## Reliability Performance



Period	11	12	13	1	2	3	4	5	6	7	8	9	10
P11 23/24 to P10 24/25	1.16	0.74	0.94	0.79	0.88	0.72	0.80	0.86	1.13	1.59	1.59	1.32	0.75
P11 22/23 to P10 23/24	0.85	0.82	0.99	1.33	1.76	1.89	1.55	0.91	1.09	1.54	1.67	1.96	1.38
Minimum Standard	0.90	0.90	0.90	0.90	0.90	0.90	0.90	0.90	0.90	0.90	0.90	0.90	0.90

The EWT (mins) figures are based on four weeks data

## Mileage Performance



Period	11	12	13	1	2	3	4	5	6	7	8	9	10
P11 23/24 to P10 24/25	94.86	97.79	97.02	97.57	97.34	98.56	98.43	93.73	94.95	88.11	92.28	92.17	98.00
P11 22/23 to P10 23/24	98.69	99.15	98.41	96.39	93.30	93.67	95.52	98.25	97.45	95.87	95.70	94.14	94.83
Minimum Standard	98.00	98.00	98.00	98.00	98.00	98.00	98.00	98.00	98.00	98.00	98.00	98.00	98.00

Mileage Performance figures are based on four weeks data