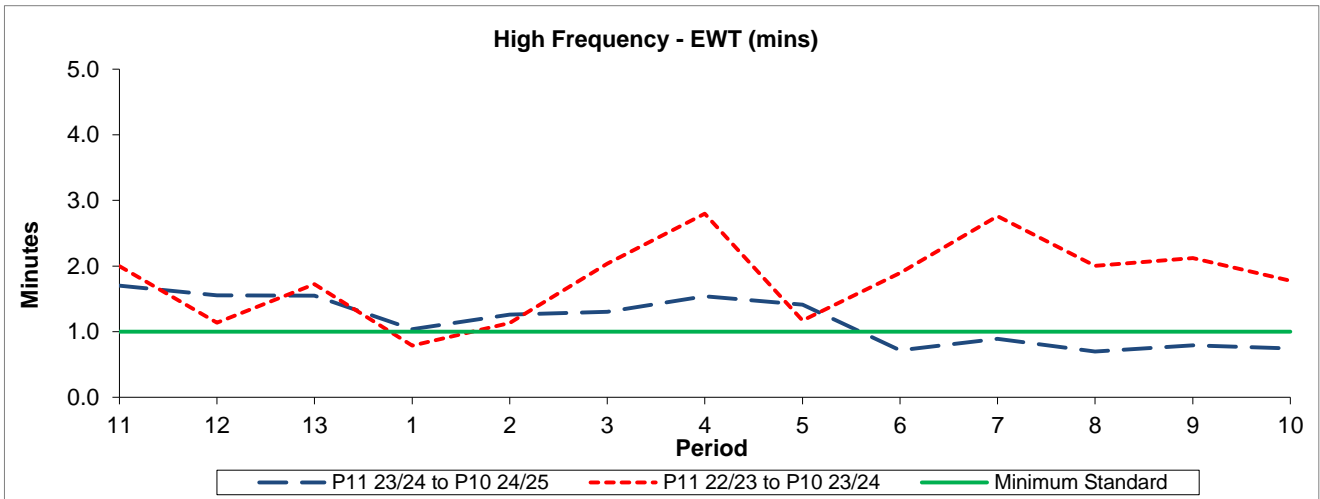


QSI & Mileage Performance Results

# Route H9

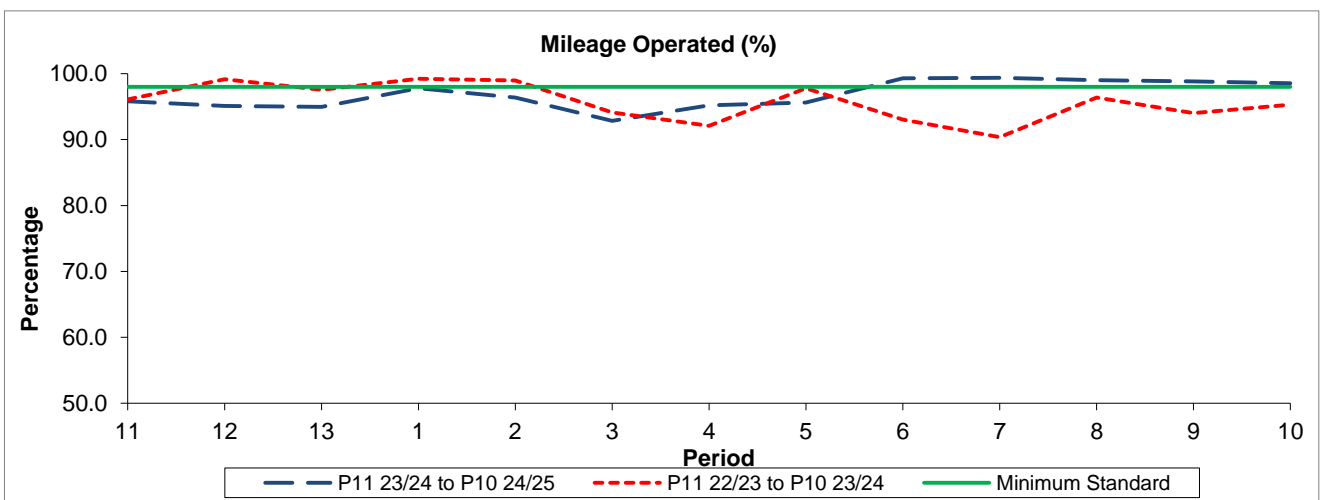
## Reliability Performance



Period	11	12	13	1	2	3	4	5	6	7	8	9	10
P11 23/24 to P10 24/25	1.70	1.55	1.55	1.04	1.26	1.30	1.54	1.41	0.71	0.89	0.70	0.79	0.74
P11 22/23 to P10 23/24	2.00	1.14	1.73	0.79	1.13	2.04	2.80	1.17	1.90	2.76	2.01	2.12	1.78
Minimum Standard	1.00	1.00	1.00	1.00	1.00	1.00	1.00	1.00	1.00	1.00	1.00	1.00	1.00

The EWT (mins) figures are based on four weeks data

## Mileage Performance



Period	11	12	13	1	2	3	4	5	6	7	8	9	10
P11 23/24 to P10 24/25	95.83	95.09	94.97	97.80	96.35	92.84	95.19	95.62	99.29	99.37	98.99	98.83	98.53
P11 22/23 to P10 23/24	96.11	99.14	97.58	99.23	98.98	94.09	92.09	97.78	93.05	90.37	96.40	94.00	95.30
Minimum Standard	98.00	98.00	98.00	98.00	98.00	98.00	98.00	98.00	98.00	98.00	98.00	98.00	98.00

Mileage Performance figures are based on four weeks data