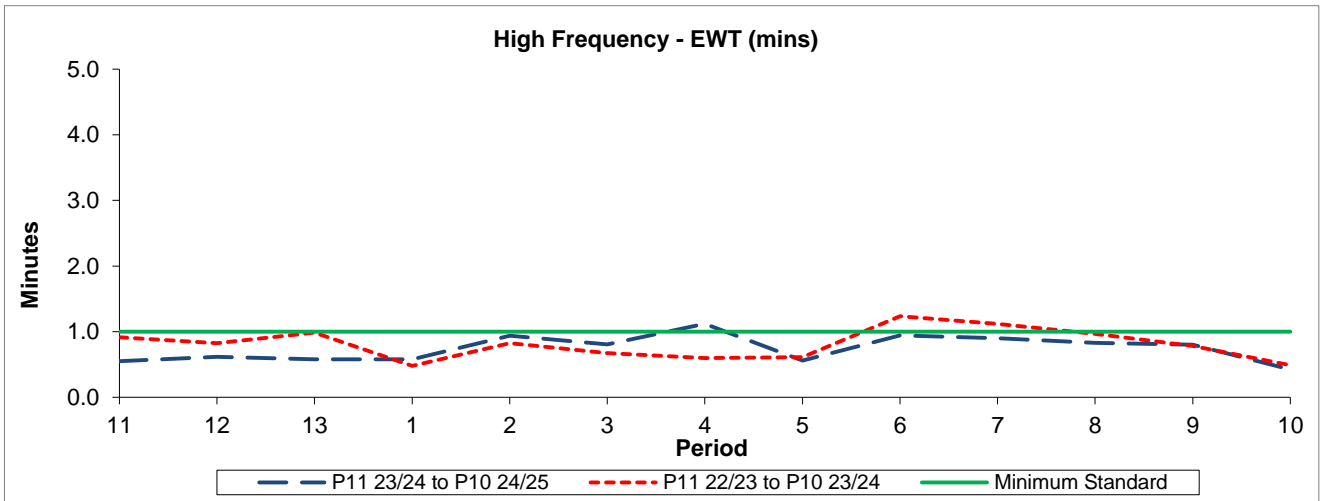


QSI & Mileage Performance Results

# Route H37

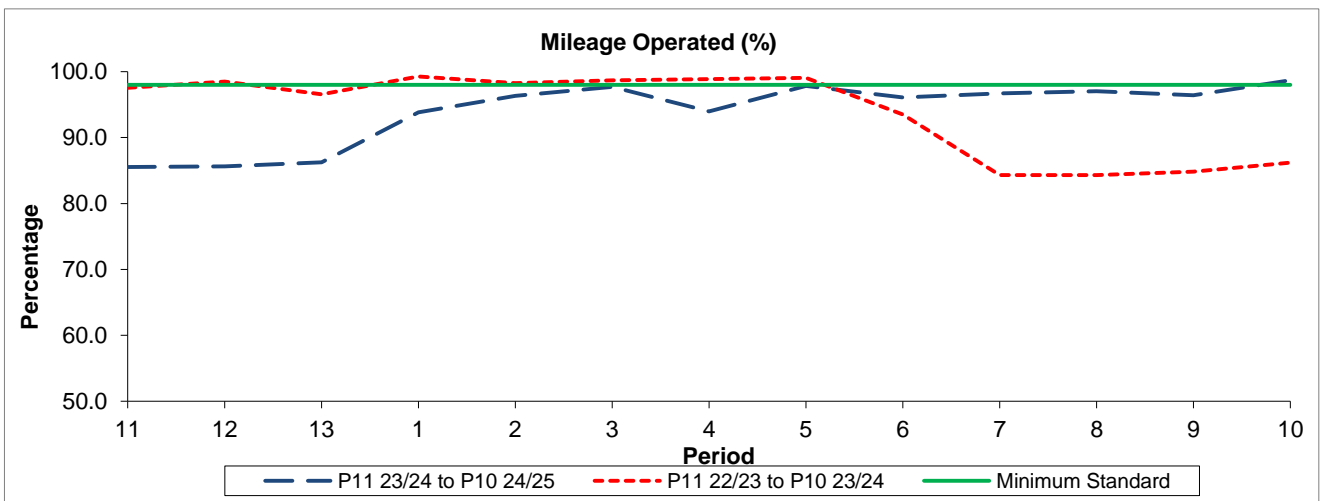
## Reliability Performance



Period	11	12	13	1	2	3	4	5	6	7	8	9	10
P11 23/24 to P10 24/25	0.55	0.62	0.58	0.58	0.94	0.81	1.12	0.56	0.94	0.90	0.83	0.80	0.42
P11 22/23 to P10 23/24	0.91	0.82	0.99	0.48	0.83	0.68	0.60	0.61	1.24	1.12	0.97	0.78	0.49
Minimum Standard	1.00	1.00	1.00	1.00	1.00	1.00	1.00	1.00	1.00	1.00	1.00	1.00	1.00

The EWT (mins) figures are based on four weeks data

## Mileage Performance



Period	11	12	13	1	2	3	4	5	6	7	8	9	10
P11 23/24 to P10 24/25	85.53	85.62	86.25	93.81	96.35	97.70	93.99	97.85	96.11	96.69	97.01	96.43	98.70
P11 22/23 to P10 23/24	97.54	98.48	96.57	99.27	98.25	98.67	98.89	99.05	93.52	84.32	84.31	84.85	86.22
Minimum Standard	98.00	98.00	98.00	98.00	98.00	98.00	98.00	98.00	98.00	98.00	98.00	98.00	98.00

Mileage Performance figures are based on four weeks data