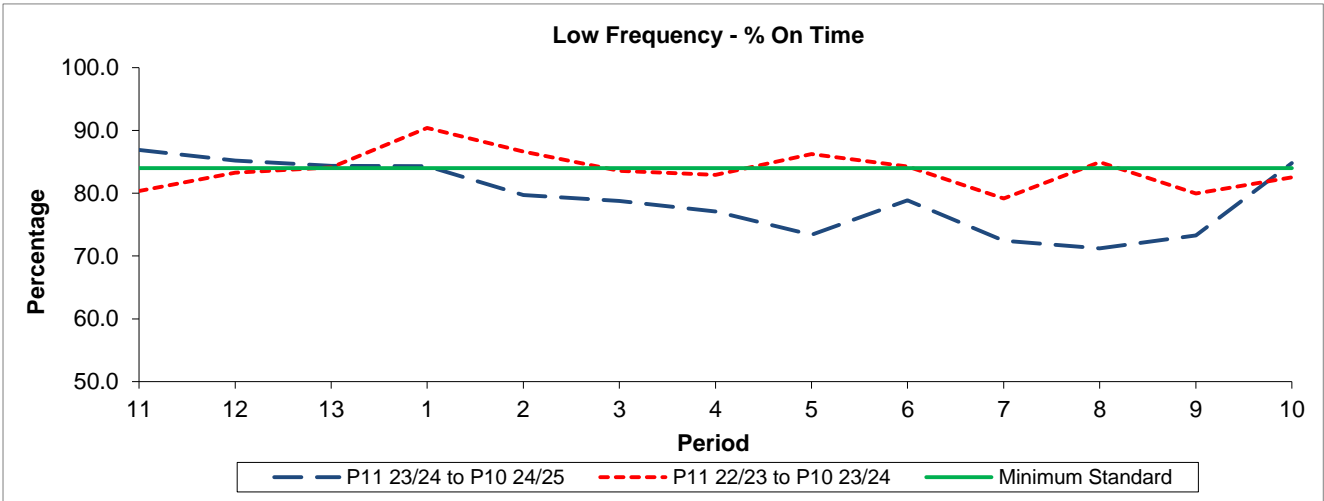


QSI & Mileage Performance Results

# Route H18

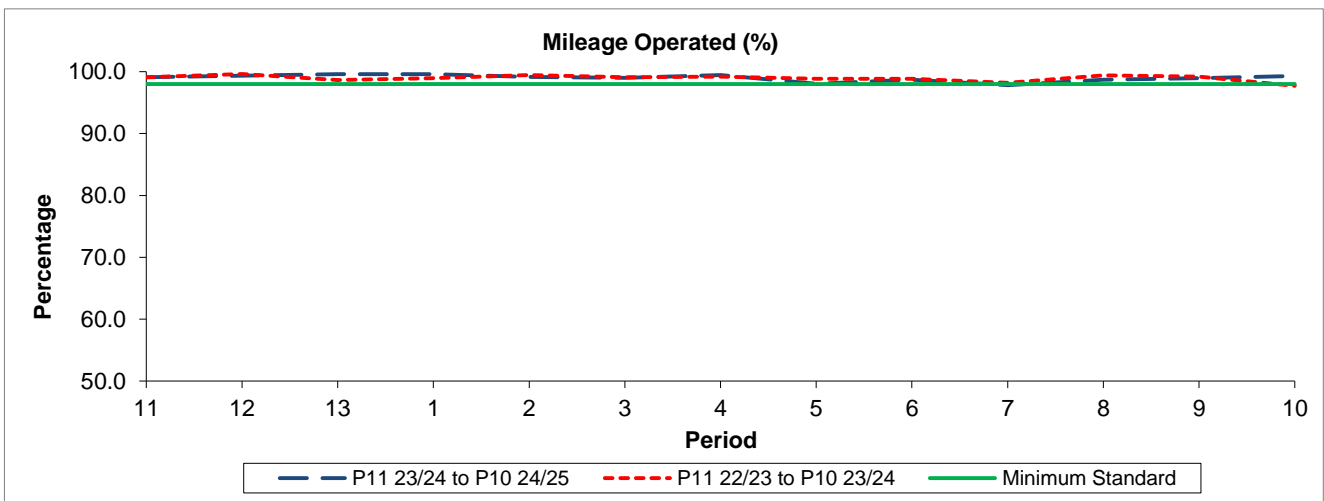
## Reliability Performance



Period	11	12	13	1	2	3	4	5	6	7	8	9	10
P11 23/24 to P10 24/25	86.89	85.18	84.38	84.30	79.73	78.80	77.11	73.39	78.88	72.43	71.22	73.28	84.83
P11 22/23 to P10 23/24	80.38	83.25	84.11	90.40	86.65	83.55	82.94	86.26	84.27	79.16	84.96	79.95	82.52
Minimum Standard	84.00	84.00	84.00	84.00	84.00	84.00	84.00	84.00	84.00	84.00	84.00	84.00	84.00

% On Time performance figures are based on four weeks data

## Mileage Performance



Period	11	12	13	1	2	3	4	5	6	7	8	9	10
P11 23/24 to P10 24/25	99.10	99.34	99.58	99.60	99.14	98.98	99.46	98.05	98.70	97.82	98.70	98.94	99.27
P11 22/23 to P10 23/24	99.10	99.61	98.66	98.94	99.46	99.08	99.20	98.86	98.87	98.21	99.39	99.20	97.71
Minimum Standard	98.00	98.00	98.00	98.00	98.00	98.00	98.00	98.00	98.00	98.00	98.00	98.00	98.00

Mileage Performance figures are based on four weeks data