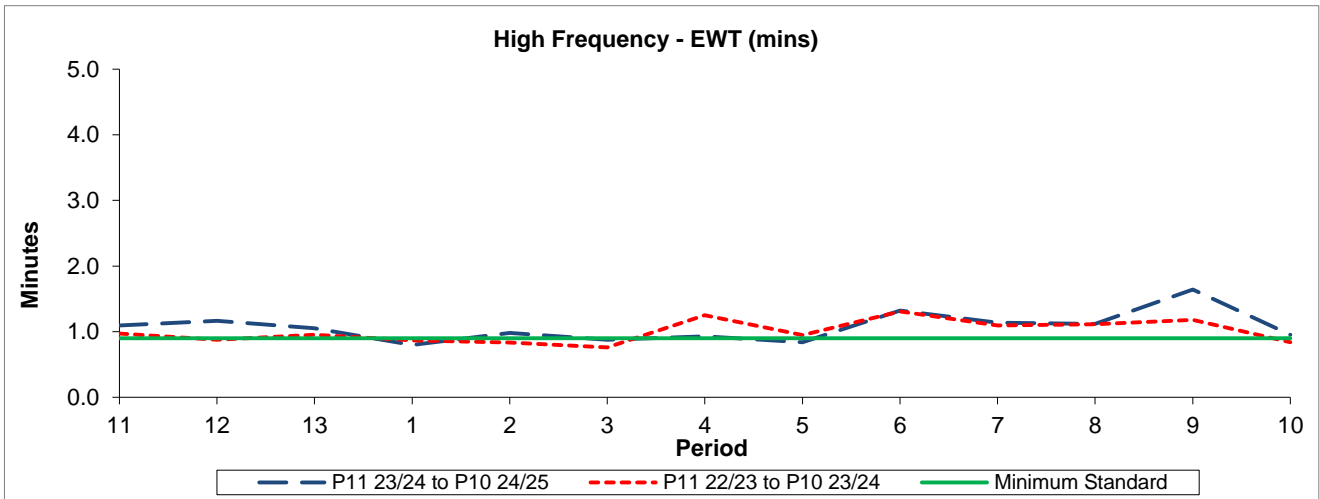


QSI & Mileage Performance Results

# Route D8

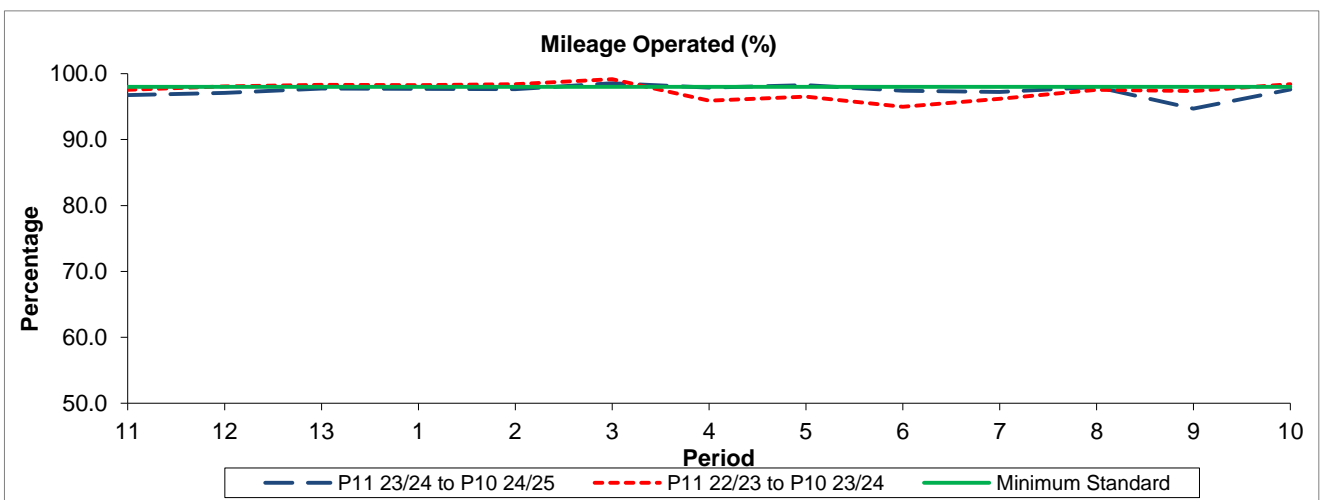
## Reliability Performance



Period	11	12	13	1	2	3	4	5	6	7	8	9	10
P11 23/24 to P10 24/25	1.09	1.17	1.05	0.80	0.98	0.88	0.93	0.84	1.32	1.14	1.12	1.64	0.95
P11 22/23 to P10 23/24	0.97	0.87	0.95	0.87	0.83	0.76	1.25	0.95	1.31	1.09	1.11	1.18	0.84
Minimum Standard	0.90	0.90	0.90	0.90	0.90	0.90	0.90	0.90	0.90	0.90	0.90	0.90	0.90

The EWT (mins) figures are based on four weeks data

## Mileage Performance



Period	11	12	13	1	2	3	4	5	6	7	8	9	10
P11 23/24 to P10 24/25	96.73	97.07	97.76	97.67	97.67	98.55	97.89	98.27	97.42	97.21	97.96	94.70	97.61
P11 22/23 to P10 23/24	97.55	98.05	98.30	98.27	98.41	99.16	95.92	96.54	94.98	96.20	97.54	97.37	98.40
Minimum Standard	98.00	98.00	98.00	98.00	98.00	98.00	98.00	98.00	98.00	98.00	98.00	98.00	98.00

Mileage Performance figures are based on four weeks data