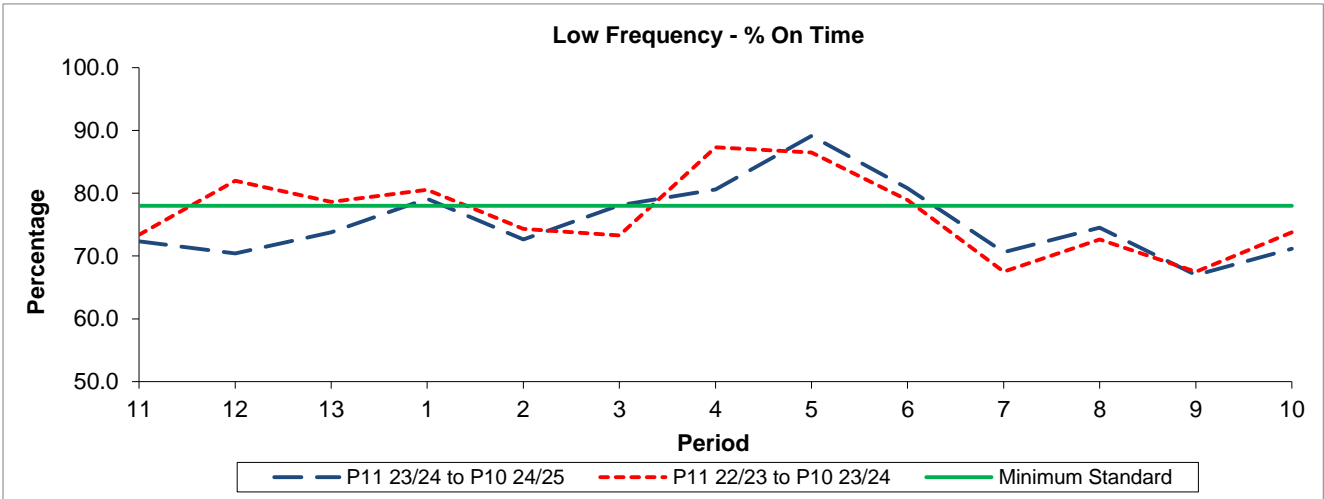


QSI & Mileage Performance Results

# Route B15

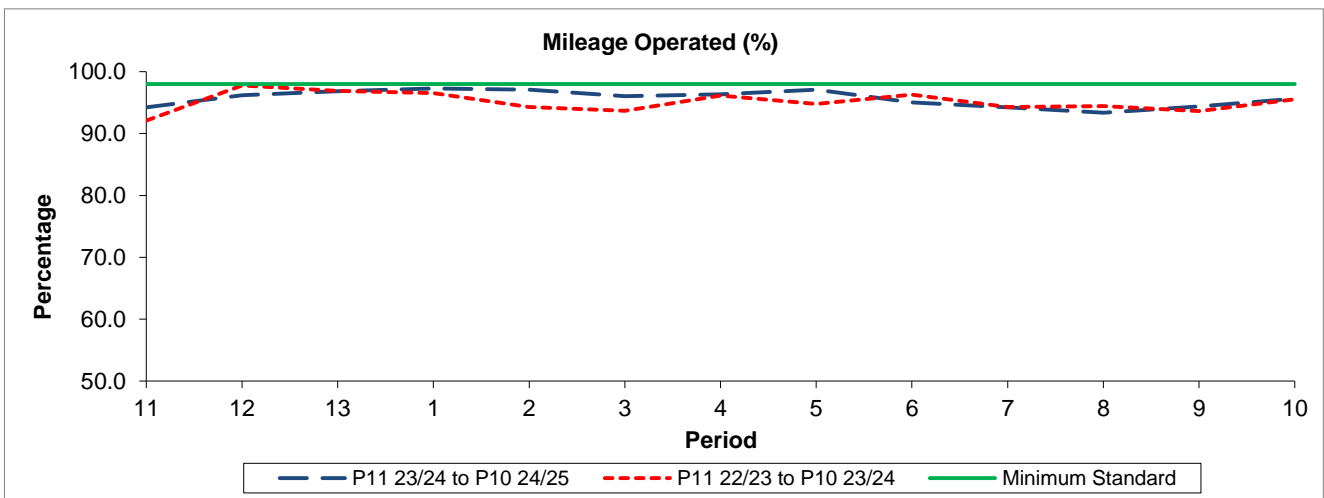
## Reliability Performance



Period	11	12	13	1	2	3	4	5	6	7	8	9	10
P11 23/24 to P10 24/25	72.35	70.42	73.77	79.12	72.66	78.09	80.59	89.13	80.82	70.61	74.54	66.98	71.16
P11 22/23 to P10 23/24	73.36	81.98	78.65	80.55	74.33	73.26	87.31	86.50	78.91	67.51	72.62	67.52	73.77
Minimum Standard	78.00	78.00	78.00	78.00	78.00	78.00	78.00	78.00	78.00	78.00	78.00	78.00	78.00

% On Time performance figures are based on four weeks data

## Mileage Performance



Period	11	12	13	1	2	3	4	5	6	7	8	9	10
P11 23/24 to P10 24/25	94.21	96.20	96.82	97.28	97.08	96.02	96.32	97.08	95.04	94.23	93.37	94.38	95.61
P11 22/23 to P10 23/24	92.09	97.77	96.87	96.53	94.30	93.68	96.14	94.80	96.29	94.28	94.44	93.64	95.51
Minimum Standard	98.00	98.00	98.00	98.00	98.00	98.00	98.00	98.00	98.00	98.00	98.00	98.00	98.00

Mileage Performance figures are based on four weeks data