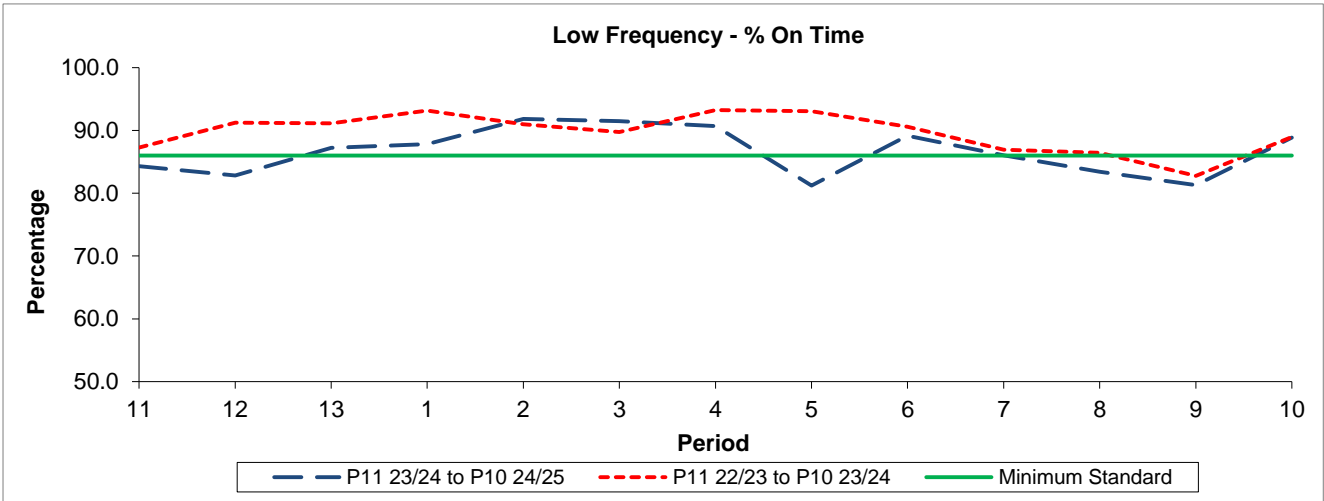


QSI & Mileage Performance Results

# Route A10

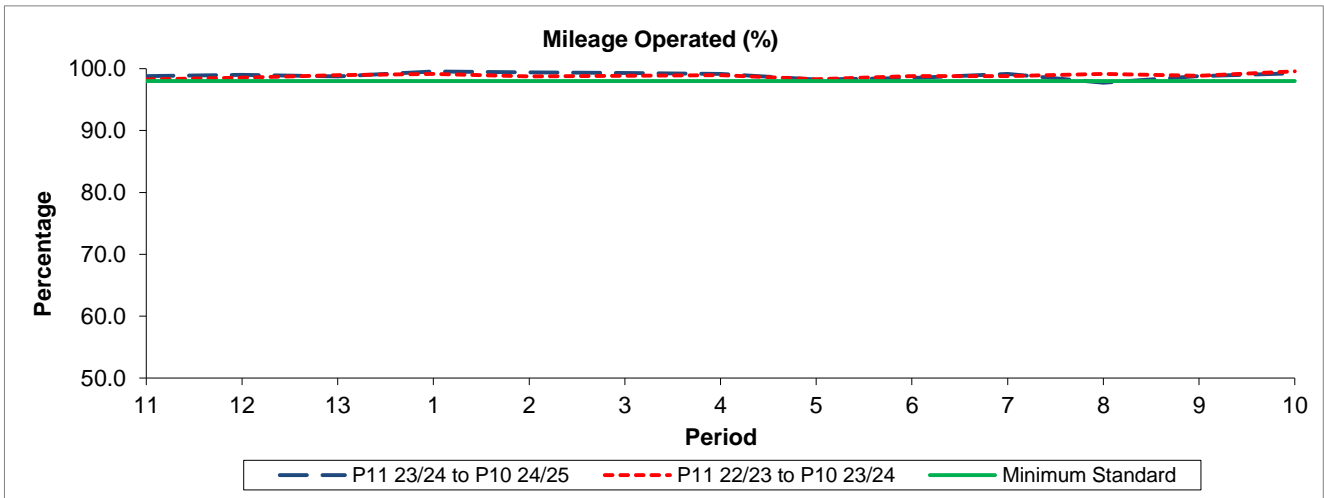
## Reliability Performance



Period	11	12	13	1	2	3	4	5	6	7	8	9	10
P11 23/24 to P10 24/25	84.30	82.84	87.24	87.82	91.83	91.49	90.69	81.22	89.17	86.03	83.44	81.30	88.85
P11 22/23 to P10 23/24	87.30	91.22	91.13	93.18	90.96	89.75	93.24	93.06	90.57	86.95	86.44	82.77	88.95
Minimum Standard	86.00	86.00	86.00	86.00	86.00	86.00	86.00	86.00	86.00	86.00	86.00	86.00	86.00

% On Time performance figures are based on four weeks data

## Mileage Performance



Period	11	12	13	1	2	3	4	5	6	7	8	9	10
P11 23/24 to P10 24/25	98.80	99.02	98.77	99.54	99.42	99.31	99.14	98.24	98.49	99.15	97.73	98.78	99.27
P11 22/23 to P10 23/24	98.26	98.57	98.93	99.17	98.73	98.82	98.95	98.28	98.78	98.82	99.17	98.87	99.57
Minimum Standard	98.00	98.00	98.00	98.00	98.00	98.00	98.00	98.00	98.00	98.00	98.00	98.00	98.00

Mileage Performance figures are based on four weeks data