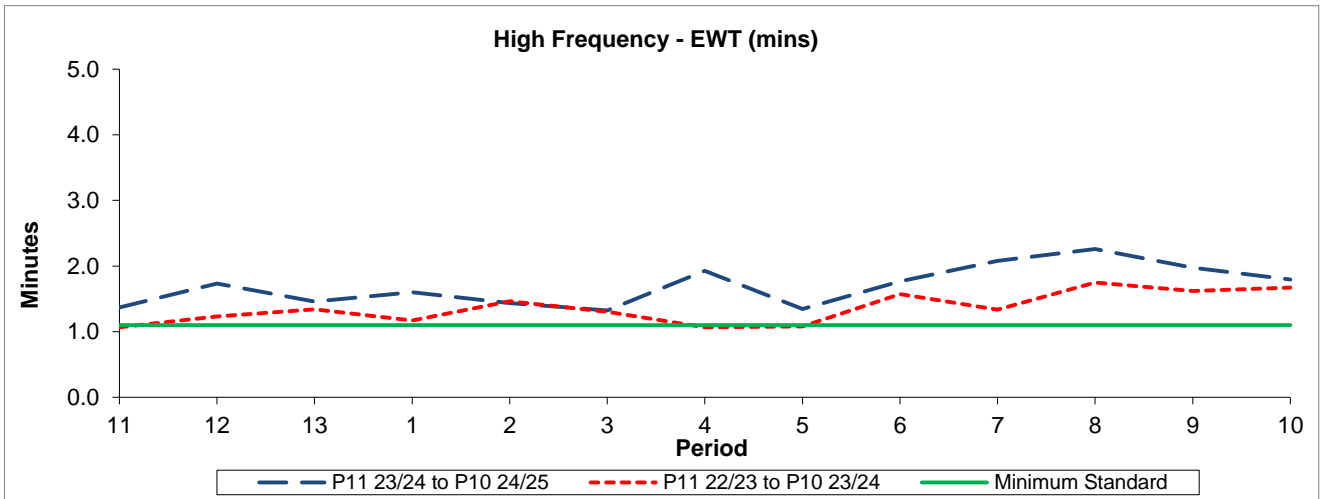


QSI & Mileage Performance Results

# Route 96

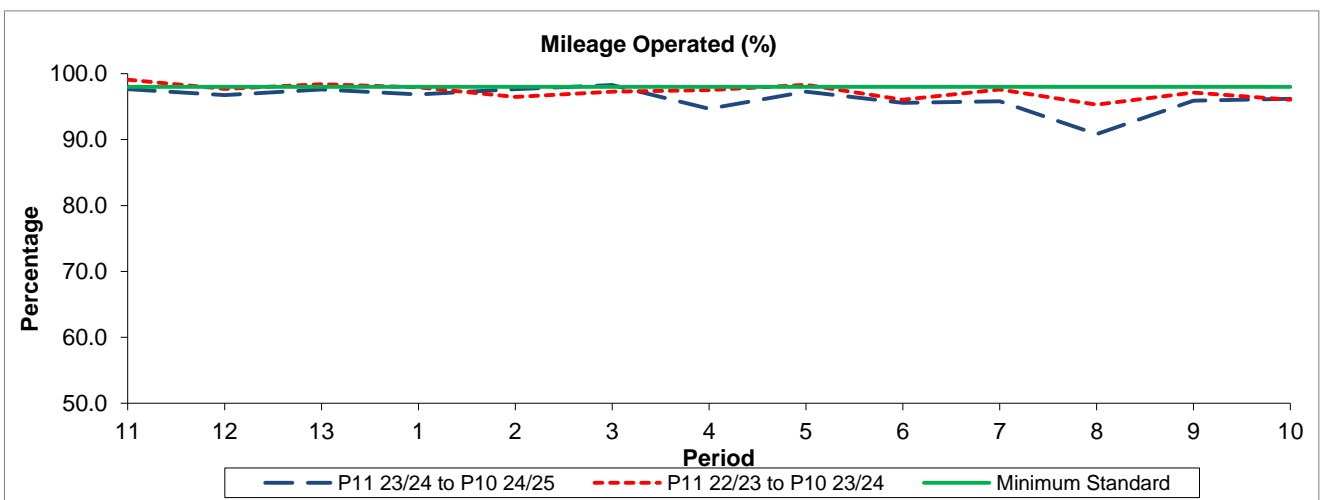
## Reliability Performance



Period	11	12	13	1	2	3	4	5	6	7	8	9	10
P11 23/24 to P10 24/25	1.37	1.73	1.46	1.60	1.44	1.32	1.93	1.35	1.77	2.08	2.26	1.97	1.80
P11 22/23 to P10 23/24	1.07	1.23	1.34	1.17	1.46	1.30	1.07	1.08	1.57	1.34	1.75	1.62	1.67
Minimum Standard	1.10	1.10	1.10	1.10	1.10	1.10	1.10	1.10	1.10	1.10	1.10	1.10	1.10

The EWT (mins) figures are based on four weeks data

## Mileage Performance



Period	11	12	13	1	2	3	4	5	6	7	8	9	10
P11 23/24 to P10 24/25	97.65	96.77	97.59	96.83	97.65	98.27	94.67	97.29	95.59	95.80	90.82	95.92	96.20
P11 22/23 to P10 23/24	99.08	97.70	98.41	97.93	96.48	97.25	97.50	98.28	96.05	97.59	95.30	97.11	96.07
Minimum Standard	98.00	98.00	98.00	98.00	98.00	98.00	98.00	98.00	98.00	98.00	98.00	98.00	98.00

Mileage Performance figures are based on four weeks data