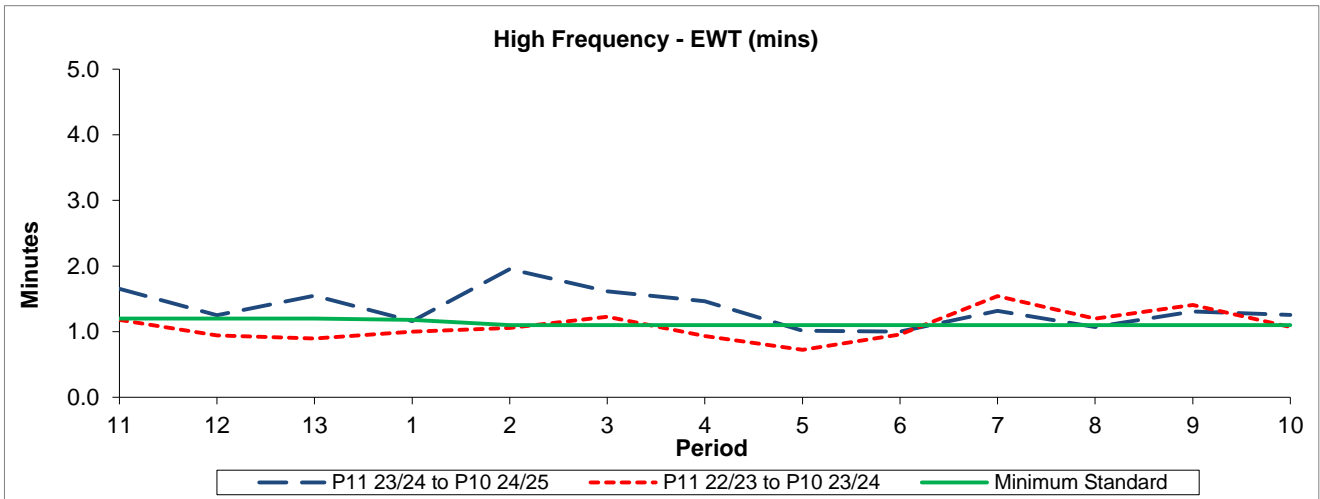


QSI & Mileage Performance Results

Route 89

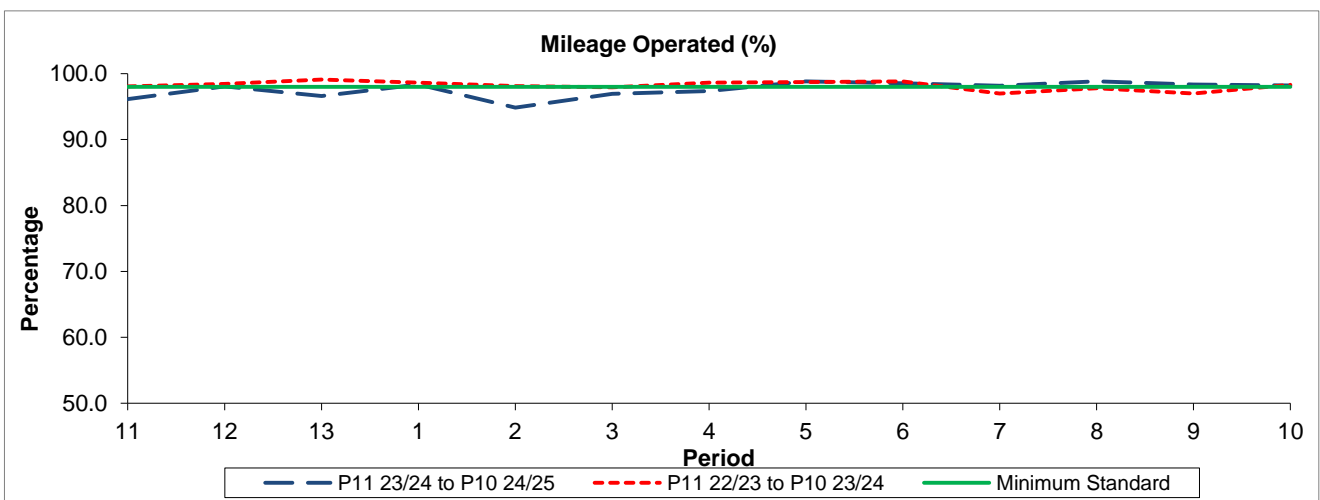
Reliability Performance



Period	11	12	13	1	2	3	4	5	6	7	8	9	10
P11 23/24 to P10 24/25	1.65	1.25	1.55	1.16	1.95	1.61	1.46	1.02	1.00	1.31	1.07	1.31	1.26
P11 22/23 to P10 23/24	1.18	0.94	0.89	1.00	1.06	1.23	0.94	0.72	0.96	1.54	1.20	1.40	1.07
Minimum Standard	1.20	1.20	1.20	1.18	1.10	1.10	1.10	1.10	1.10	1.10	1.10	1.10	1.10

The EWT (mins) figures are based on four weeks data

Mileage Performance



Period	11	12	13	1	2	3	4	5	6	7	8	9	10
P11 23/24 to P10 24/25	96.12	98.09	96.59	98.36	94.85	96.93	97.39	98.81	98.54	98.16	98.84	98.33	98.21
P11 22/23 to P10 23/24	98.09	98.43	99.10	98.63	98.12	97.92	98.64	98.75	98.81	96.98	97.78	97.00	98.30
Minimum Standard	98.00	98.00	98.00	98.00	98.00	98.00	98.00	98.00	98.00	98.00	98.00	98.00	98.00

Mileage Performance figures are based on four weeks data