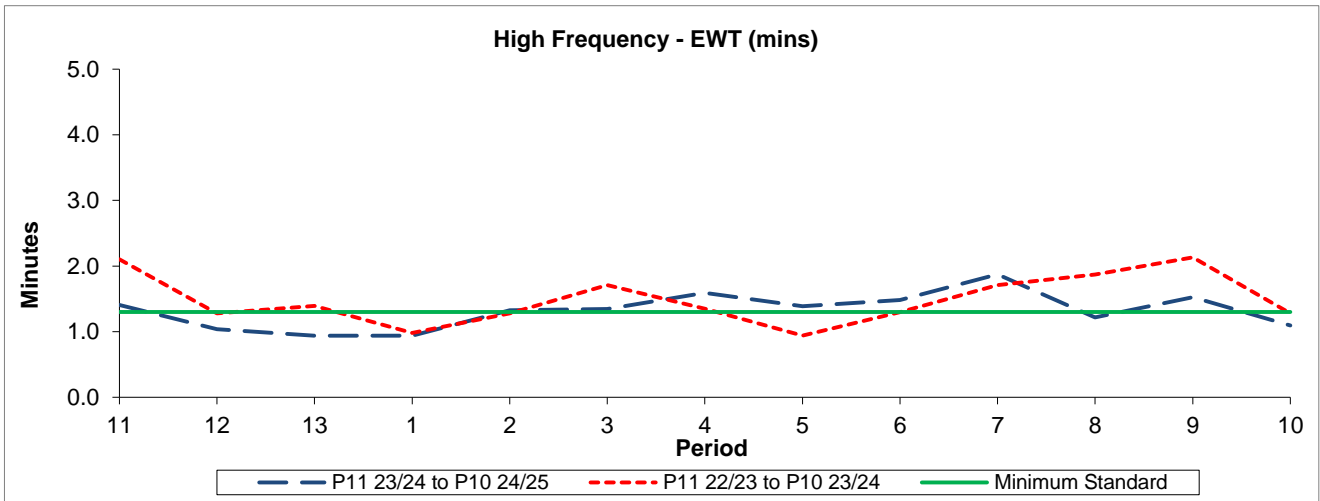


QSI & Mileage Performance Results

# Route 70

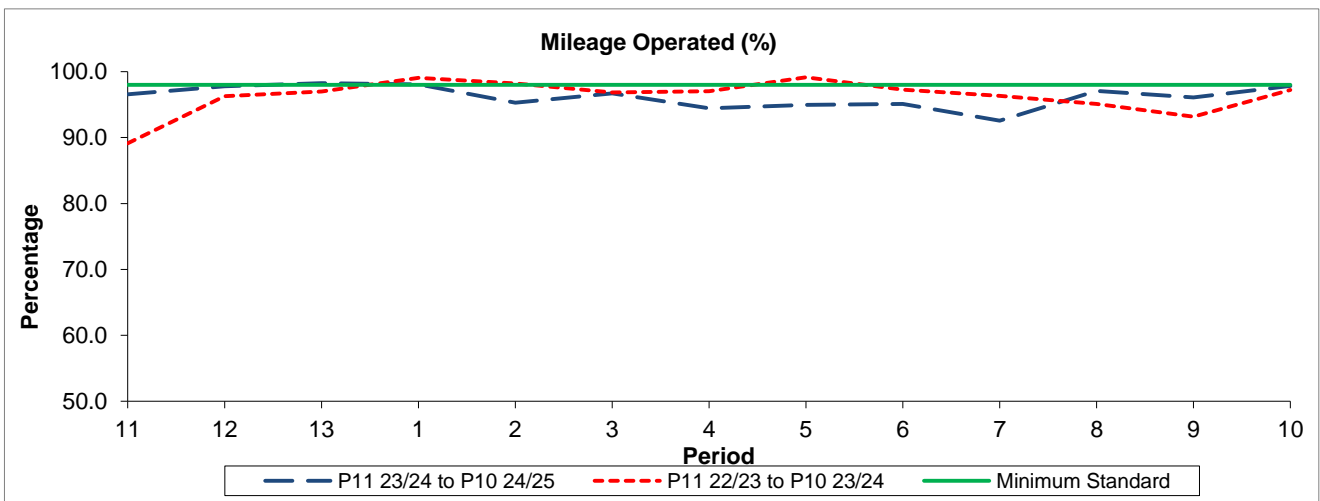
## Reliability Performance



Period	11	12	13	1	2	3	4	5	6	7	8	9	10
P11 23/24 to P10 24/25	1.41	1.04	0.94	0.94	1.33	1.34	1.59	1.39	1.48	1.87	1.22	1.52	1.09
P11 22/23 to P10 23/24	2.10	1.28	1.39	0.98	1.28	1.71	1.35	0.94	1.30	1.71	1.87	2.13	1.28
Minimum Standard	1.30	1.30	1.30	1.30	1.30	1.30	1.30	1.30	1.30	1.30	1.30	1.30	1.30

The EWT (mins) figures are based on four weeks data

## Mileage Performance



Period	11	12	13	1	2	3	4	5	6	7	8	9	10
P11 23/24 to P10 24/25	96.57	97.81	98.25	98.09	95.29	96.70	94.44	94.98	95.09	92.56	97.07	96.09	97.83
P11 22/23 to P10 23/24	89.13	96.28	96.97	99.04	98.19	96.83	97.04	99.14	97.27	96.31	95.12	93.19	97.24
Minimum Standard	98.00	98.00	98.00	98.00	98.00	98.00	98.00	98.00	98.00	98.00	98.00	98.00	98.00

Mileage Performance figures are based on four weeks data