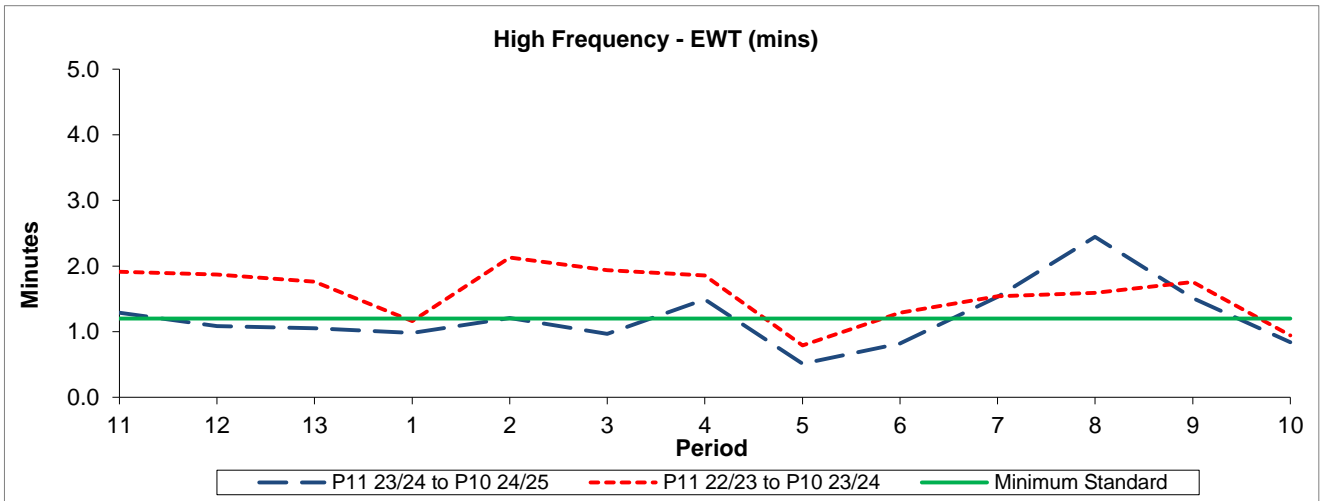


QSI & Mileage Performance Results

# Route 493

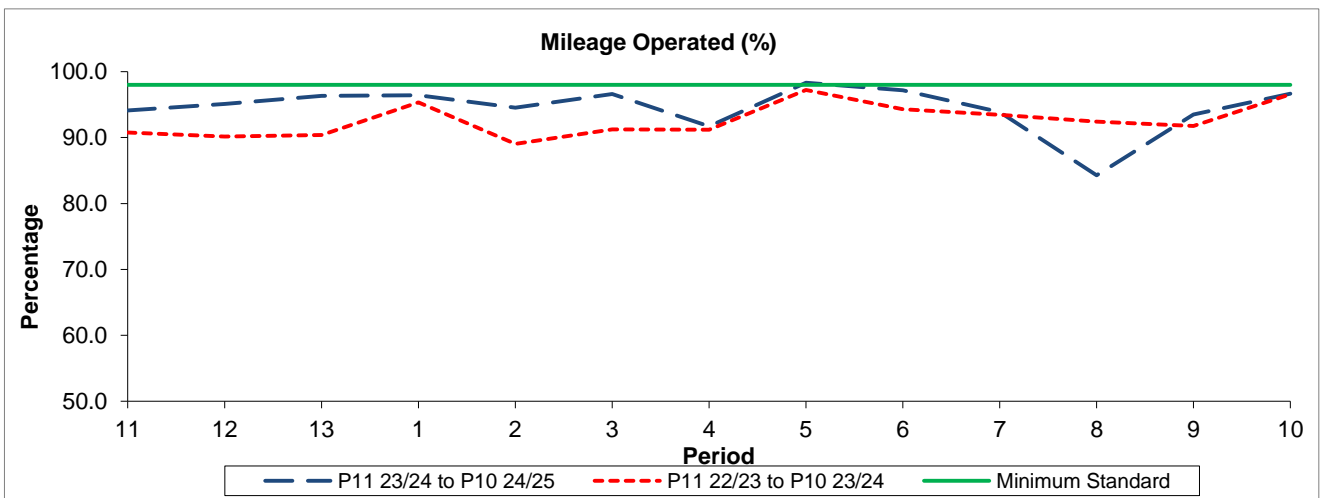
## Reliability Performance



Period	11	12	13	1	2	3	4	5	6	7	8	9	10
P11 23/24 to P10 24/25	1.29	1.08	1.05	0.98	1.21	0.97	1.49	0.51	0.82	1.53	2.44	1.51	0.84
P11 22/23 to P10 23/24	1.92	1.87	1.76	1.16	2.13	1.94	1.86	0.79	1.29	1.54	1.59	1.75	0.94
Minimum Standard	1.20	1.20	1.20	1.20	1.20	1.20	1.20	1.20	1.20	1.20	1.20	1.20	1.20

The EWT (mins) figures are based on four weeks data

## Mileage Performance



Period	11	12	13	1	2	3	4	5	6	7	8	9	10
P11 23/24 to P10 24/25	94.13	95.10	96.34	96.44	94.54	96.59	91.70	98.32	97.19	93.90	84.28	93.51	96.64
P11 22/23 to P10 23/24	90.77	90.17	90.40	95.33	89.04	91.23	91.20	97.22	94.32	93.44	92.42	91.76	96.57
Minimum Standard	98.00	98.00	98.00	98.00	98.00	98.00	98.00	98.00	98.00	98.00	98.00	98.00	98.00

Mileage Performance figures are based on four weeks data