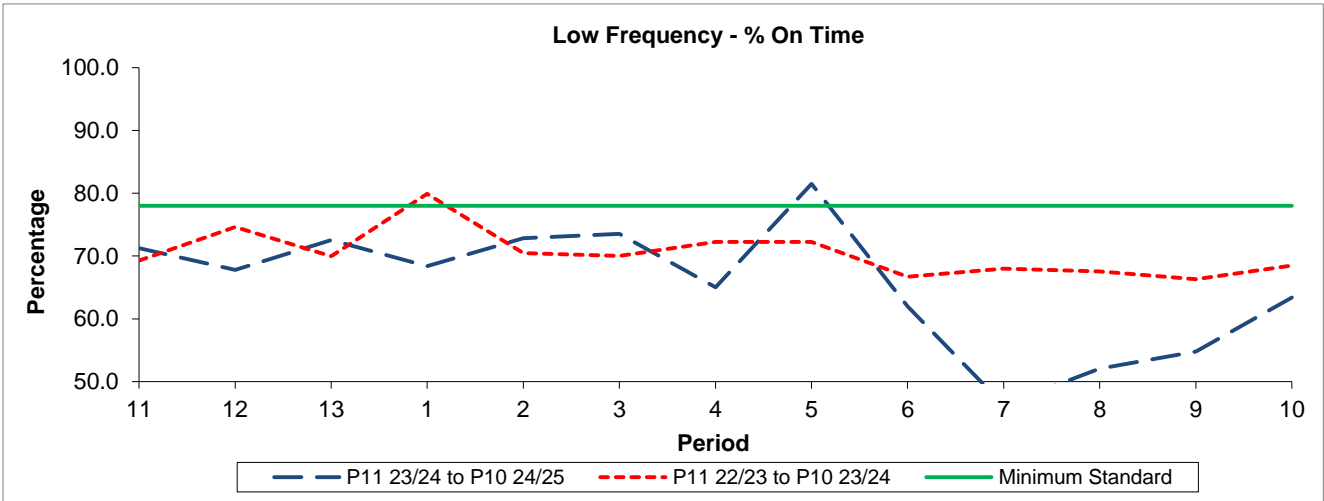


QSI & Mileage Performance Results

# Route 492

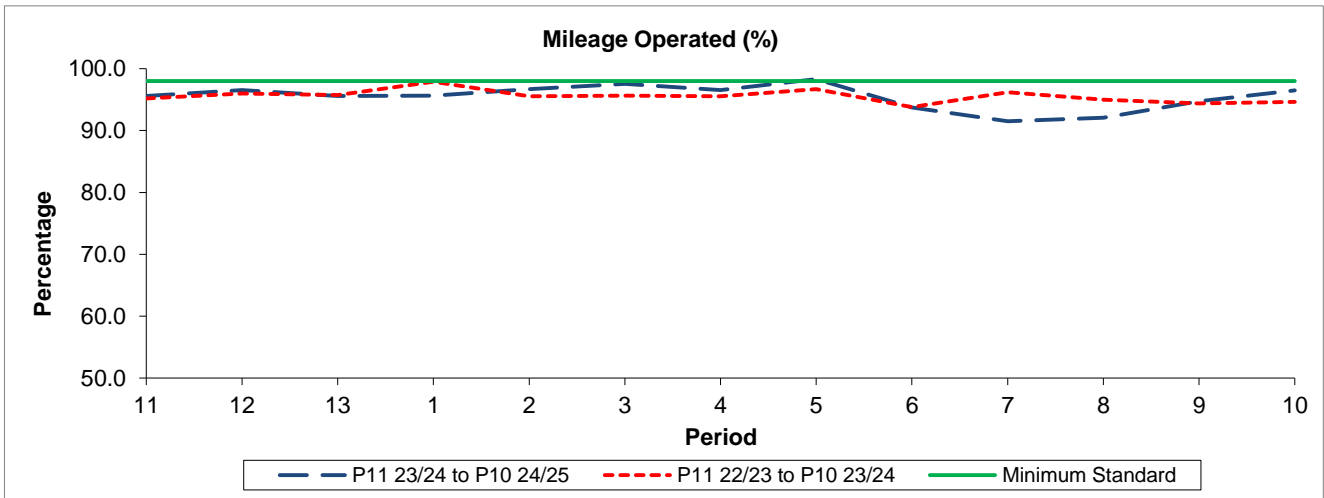
## Reliability Performance



Period	11	12	13	1	2	3	4	5	6	7	8	9	10
P11 23/24 to P10 24/25	71.28	67.81	72.55	68.39	72.84	73.53	65.02	81.49	62.00	46.27	52.07	54.81	63.41
P11 22/23 to P10 23/24	69.28	74.60	69.98	79.91	70.45	70.03	72.26	72.24	66.72	68.01	67.55	66.31	68.48
Minimum Standard	78.00	78.00	78.00	78.00	78.00	78.00	78.00	78.00	78.00	78.00	78.00	78.00	78.00

% On Time performance figures are based on four weeks data

## Mileage Performance



Period	11	12	13	1	2	3	4	5	6	7	8	9	10
P11 23/24 to P10 24/25	95.56	96.52	95.57	95.61	96.71	97.54	96.55	98.31	93.73	91.50	92.06	94.74	96.49
P11 22/23 to P10 23/24	95.20	95.97	95.76	97.89	95.52	95.63	95.54	96.70	93.79	96.19	94.96	94.39	94.66
Minimum Standard	98.00	98.00	98.00	98.00	98.00	98.00	98.00	98.00	98.00	98.00	98.00	98.00	98.00

Mileage Performance figures are based on four weeks data