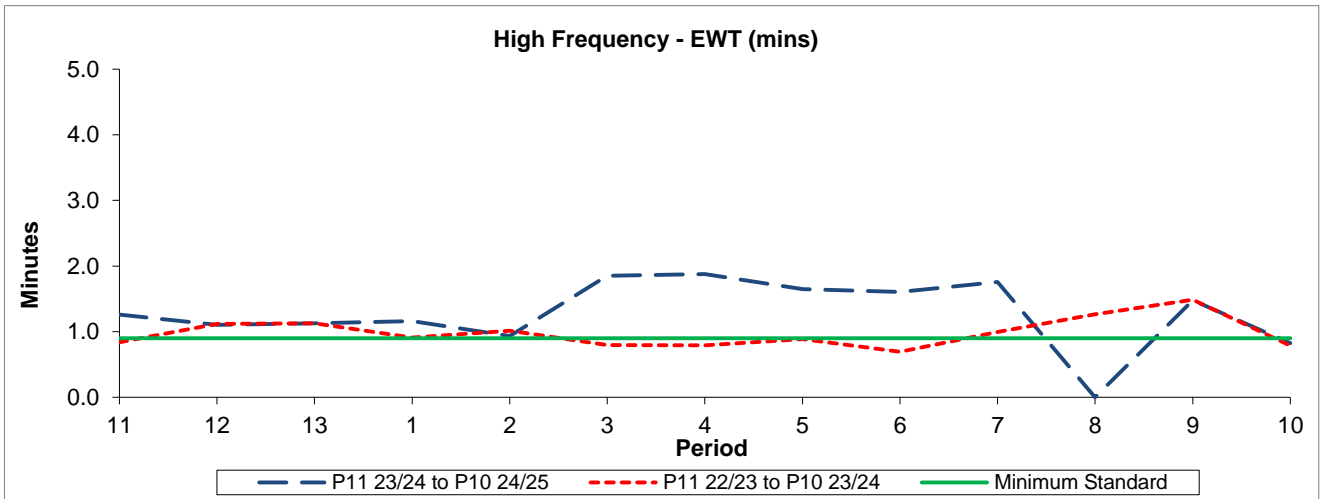


QSI & Mileage Performance Results

# Route 487

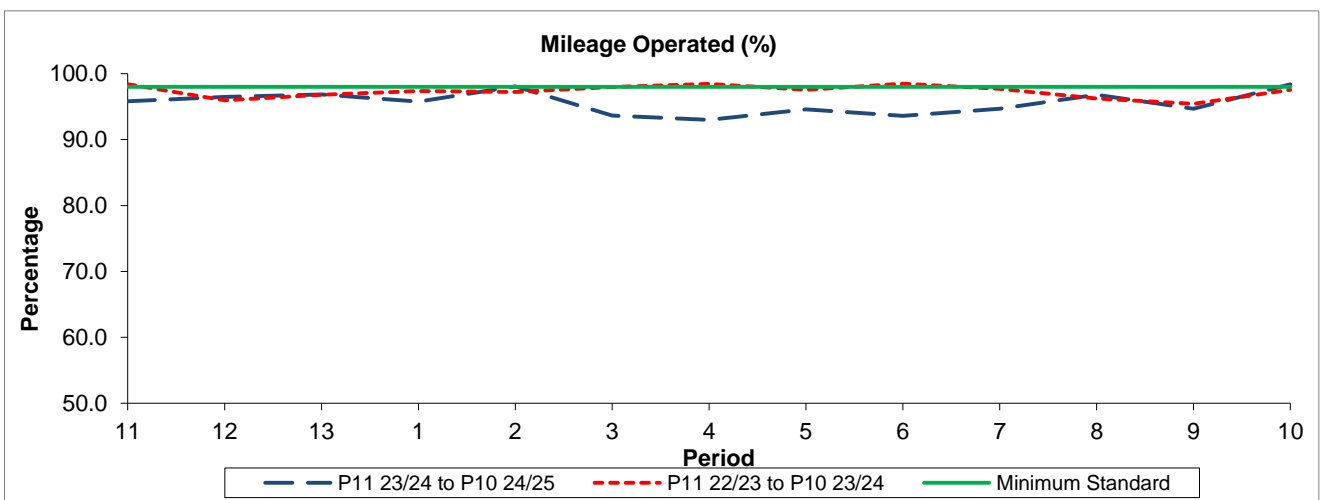
## Reliability Performance



Period	11	12	13	1	2	3	4	5	6	7	8	9	10
P11 23/24 to P10 24/25	1.26	1.10	1.13	1.16	0.94	1.85	1.88	1.65	1.61	1.76		1.48	0.83
P11 22/23 to P10 23/24	0.84	1.12	1.13	0.91	1.01	0.80	0.79	0.89	0.69	1.00	1.26	1.49	0.79
Minimum Standard	0.90	0.90	0.90	0.90	0.90	0.90	0.90	0.90	0.90	0.90		0.90	0.90

The EWT (mins) figures are based on four weeks data

## Mileage Performance



Period	11	12	13	1	2	3	4	5	6	7	8	9	10
P11 23/24 to P10 24/25	95.82	96.45	96.83	95.74	98.06	93.63	92.99	94.60	93.62	94.67	96.79	94.66	98.39
P11 22/23 to P10 23/24	98.40	95.94	96.80	97.35	97.24	97.95	98.46	97.57	98.48	97.70	96.25	95.42	97.54
Minimum Standard	98.00	98.00	98.00	98.00	98.00	98.00	98.00	98.00	98.00	98.00	98.00	98.00	98.00

Mileage Performance figures are based on four weeks data