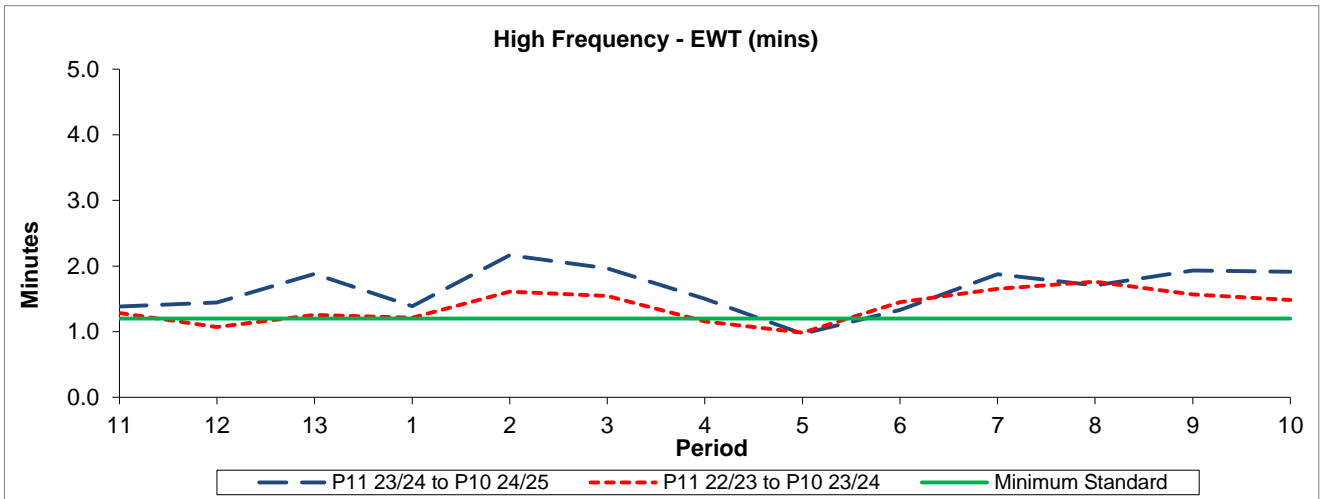


QSI & Mileage Performance Results

# Route 486

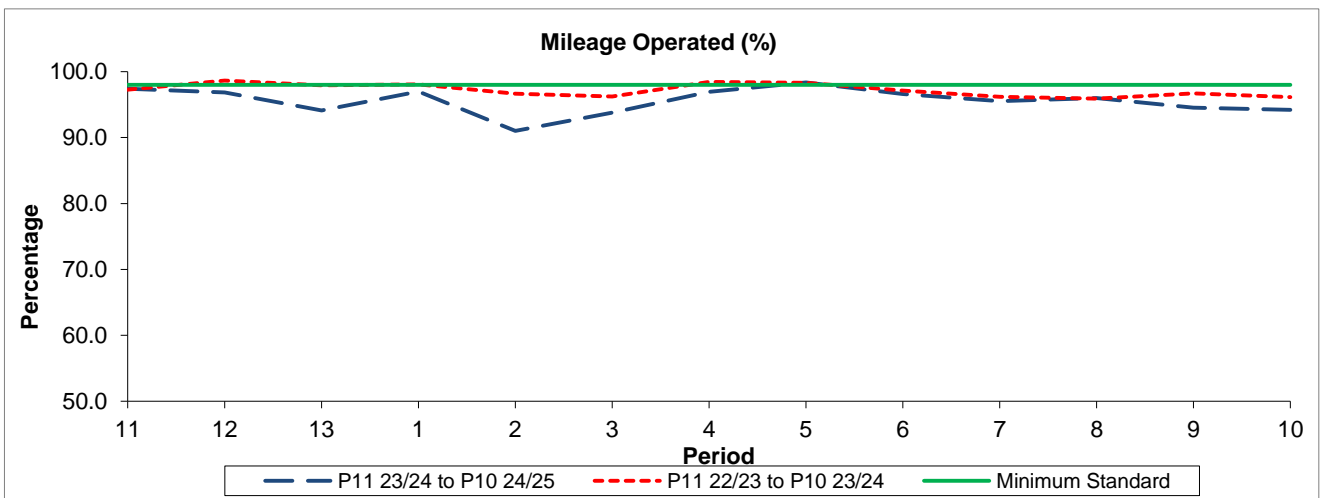
## Reliability Performance



Period	11	12	13	1	2	3	4	5	6	7	8	9	10
P11 23/24 to P10 24/25	1.38	1.44	1.88	1.39	2.17	1.97	1.50	0.97	1.33	1.88	1.70	1.93	1.91
P11 22/23 to P10 23/24	1.29	1.07	1.26	1.21	1.61	1.54	1.15	0.98	1.45	1.65	1.76	1.57	1.48
Minimum Standard	1.20	1.20	1.20	1.20	1.20	1.20	1.20	1.20	1.20	1.20	1.20	1.20	1.20

The EWT (mins) figures are based on four weeks data

## Mileage Performance



Period	11	12	13	1	2	3	4	5	6	7	8	9	10
P11 23/24 to P10 24/25	97.39	96.84	94.14	96.98	91.01	93.77	96.94	98.36	96.62	95.54	96.01	94.55	94.19
P11 22/23 to P10 23/24	97.25	98.65	97.93	98.06	96.66	96.21	98.43	98.32	97.12	96.19	95.91	96.70	96.12
Minimum Standard	98.00	98.00	98.00	98.00	98.00	98.00	98.00	98.00	98.00	98.00	98.00	98.00	98.00

Mileage Performance figures are based on four weeks data