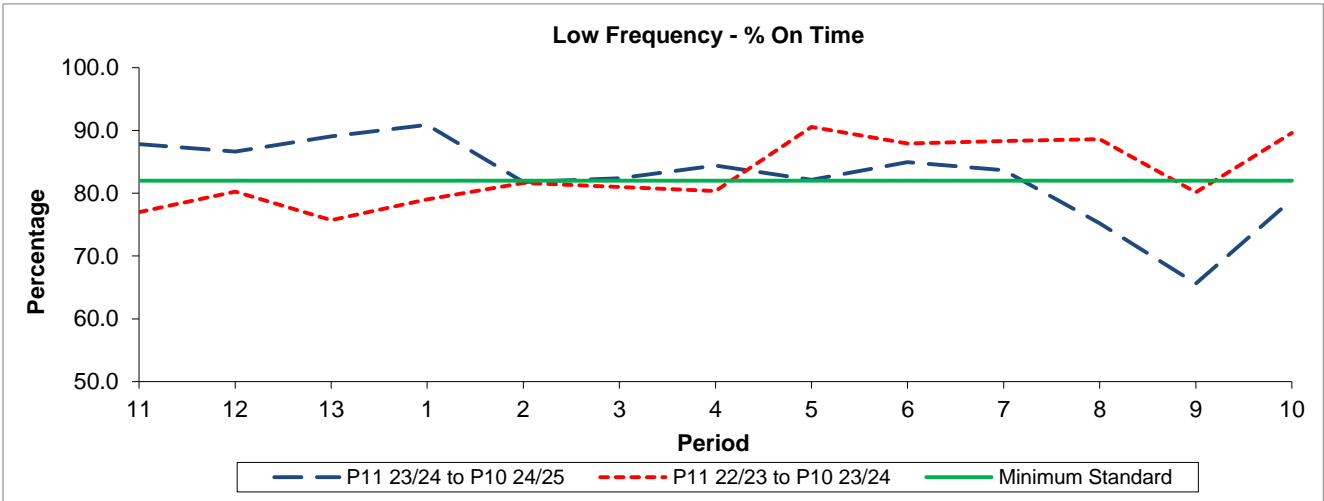


QSI & Mileage Performance Results

Route 481

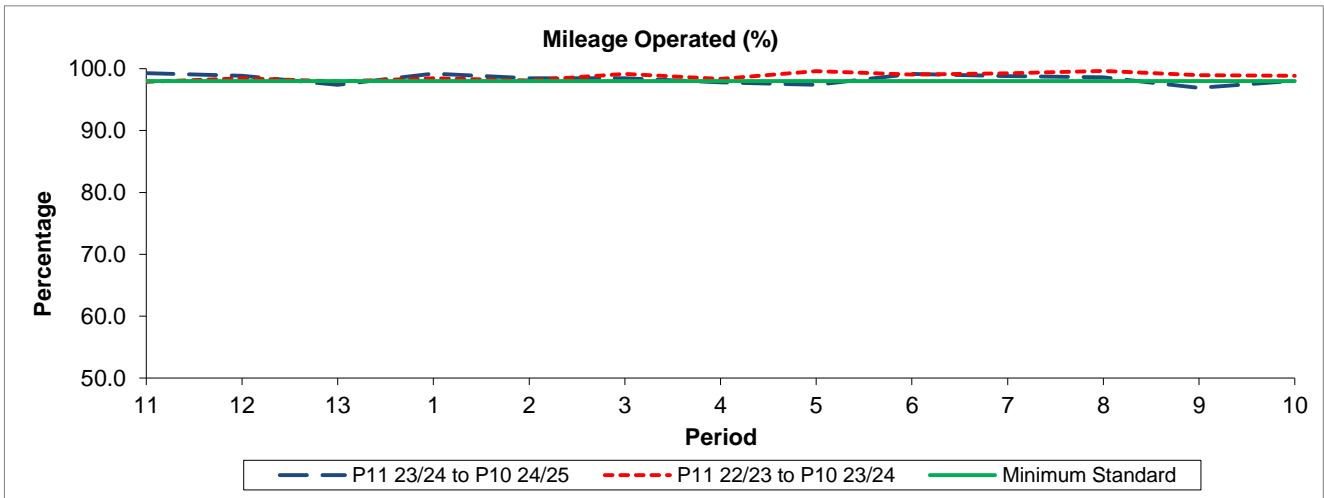
Reliability Performance



Period	11	12	13	1	2	3	4	5	6	7	8	9	10
P11 23/24 to P10 24/25	87.83	86.63	89.04	90.89	81.79	82.39	84.38	82.16	84.94	83.65	75.19	65.62	78.96
P11 22/23 to P10 23/24	76.99	80.26	75.72	79.01	81.64	80.98	80.36	90.56	87.91	88.31	88.63	80.14	89.62
Minimum Standard	82.00	82.00	82.00	82.00	82.00	82.00	82.00	82.00	82.00	82.00	82.00	82.00	82.00

% On Time performance figures are based on four weeks data

Mileage Performance



Period	11	12	13	1	2	3	4	5	6	7	8	9	10
P11 23/24 to P10 24/25	99.27	98.86	97.38	99.18	98.44	98.45	97.77	97.38	99.13	98.79	98.57	96.90	98.05
P11 22/23 to P10 23/24	97.88	98.42	97.96	98.46	98.08	99.16	98.33	99.59	99.04	99.27	99.63	98.93	98.82
Minimum Standard	98.00	98.00	98.00	98.00	98.00	98.00	98.00	98.00	98.00	98.00	98.00	98.00	98.00

Mileage Performance figures are based on four weeks data