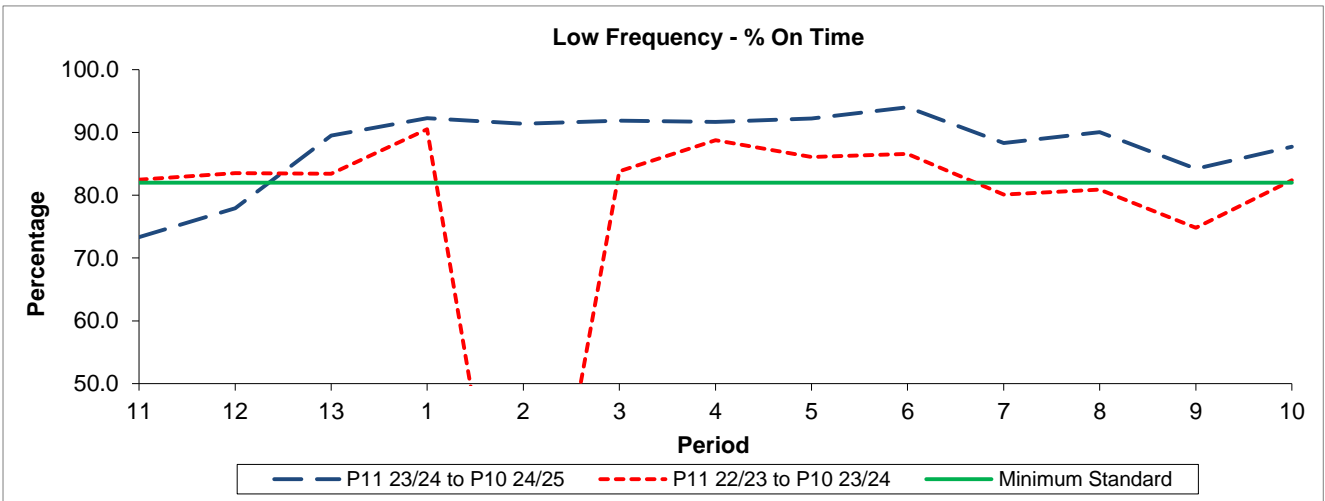


QSI & Mileage Performance Results

# Route 470

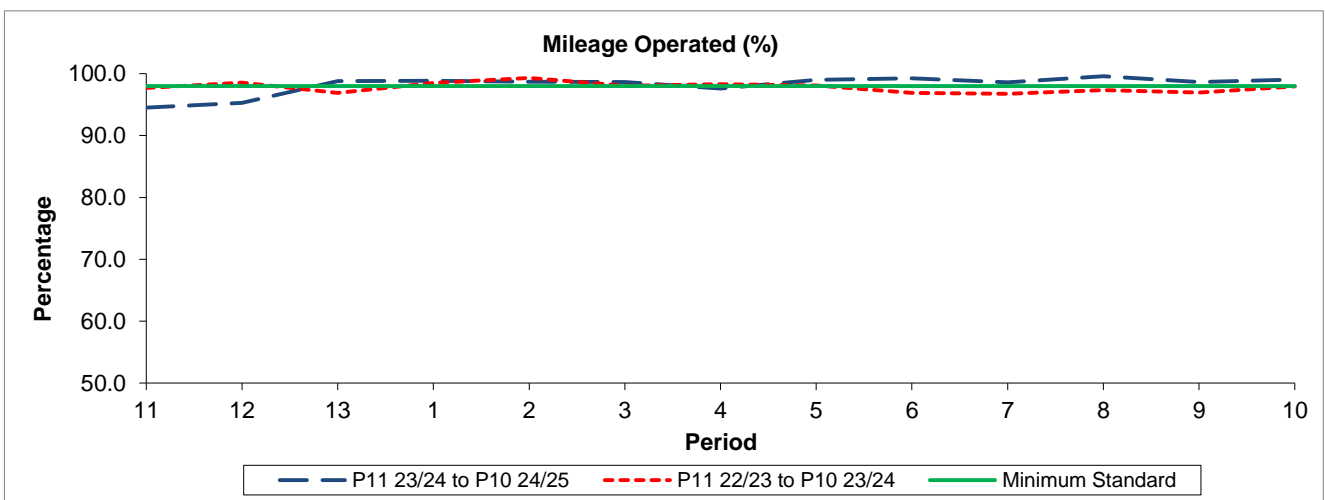
## Reliability Performance



Period	11	12	13	1	2	3	4	5	6	7	8	9	10
P11 23/24 to P10 24/25	73.33	77.93	89.51	92.29	91.38	91.87	91.67	92.20	94.01	88.34	90.04	84.20	87.70
P11 22/23 to P10 23/24	82.48	83.50	83.42	90.51	-	83.80	88.75	86.08	86.57	80.13	80.88	74.80	82.37
Minimum Standard	82.00	82.00	82.00	82.00	82.00	82.00	82.00	82.00	82.00	82.00	82.00	82.00	82.00

% On Time performance figures are based on four weeks data

## Mileage Performance



Period	11	12	13	1	2	3	4	5	6	7	8	9	10
P11 23/24 to P10 24/25	94.51	95.30	98.78	98.85	98.72	98.64	97.57	99.00	99.26	98.59	99.58	98.66	99.06
P11 22/23 to P10 23/24	97.68	98.55	96.89	98.50	99.31	98.05	98.29	98.07	96.90	96.75	97.34	96.93	97.92
Minimum Standard	98.00	98.00	98.00	98.00	98.00	98.00	98.00	98.00	98.00	98.00	98.00	98.00	98.00

Mileage Performance figures are based on four weeks data