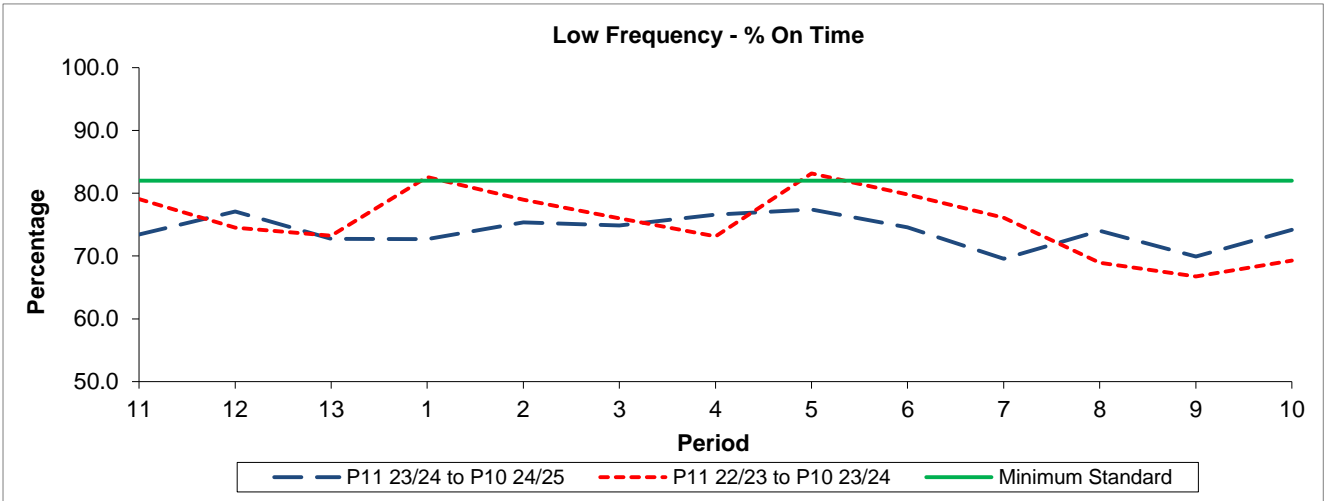


QSI & Mileage Performance Results

# Route 469

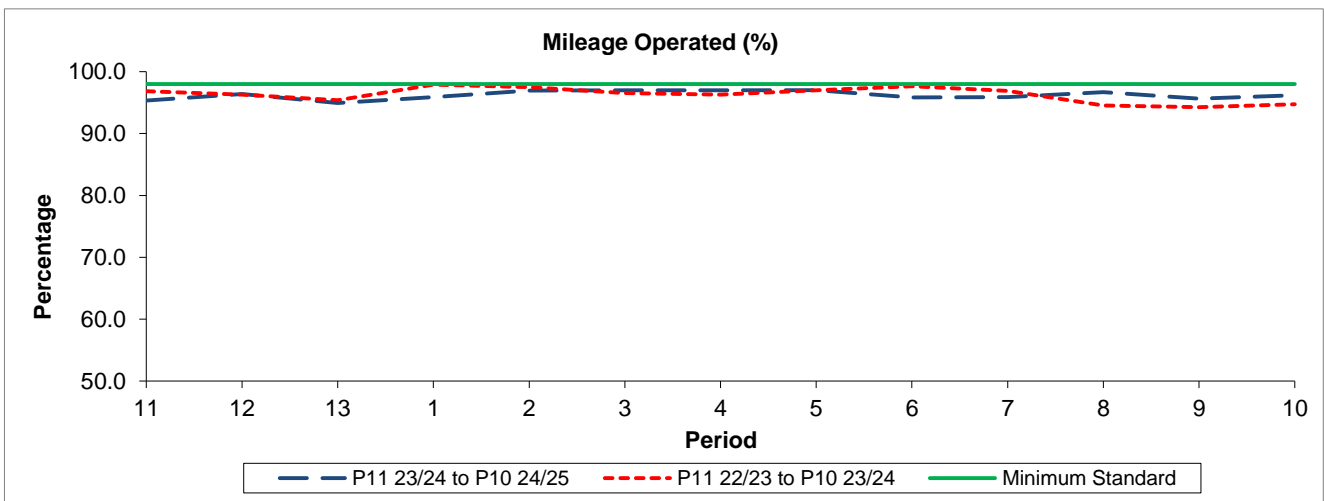
## Reliability Performance



Period	11	12	13	1	2	3	4	5	6	7	8	9	10
P11 23/24 to P10 24/25	73.41	77.10	72.76	72.68	75.36	74.87	76.61	77.41	74.55	69.57	74.04	69.94	74.17
P11 22/23 to P10 23/24	79.09	74.54	73.25	82.59	78.95	76.01	73.12	83.16	79.80	76.10	68.92	66.75	69.26
Minimum Standard	82.00	82.00	82.00	82.00	82.00	82.00	82.00	82.00	82.00	82.00	82.00	82.00	82.00

% On Time performance figures are based on four weeks data

## Mileage Performance



Period	11	12	13	1	2	3	4	5	6	7	8	9	10
P11 23/24 to P10 24/25	95.36	96.40	94.93	95.90	96.92	96.97	96.98	97.01	95.85	95.90	96.70	95.65	96.20
P11 22/23 to P10 23/24	96.85	96.31	95.38	97.90	97.47	96.54	96.27	96.99	97.65	96.88	94.54	94.26	94.73
Minimum Standard	98.00	98.00	98.00	98.00	98.00	98.00	98.00	98.00	98.00	98.00	98.00	98.00	98.00

Mileage Performance figures are based on four weeks data