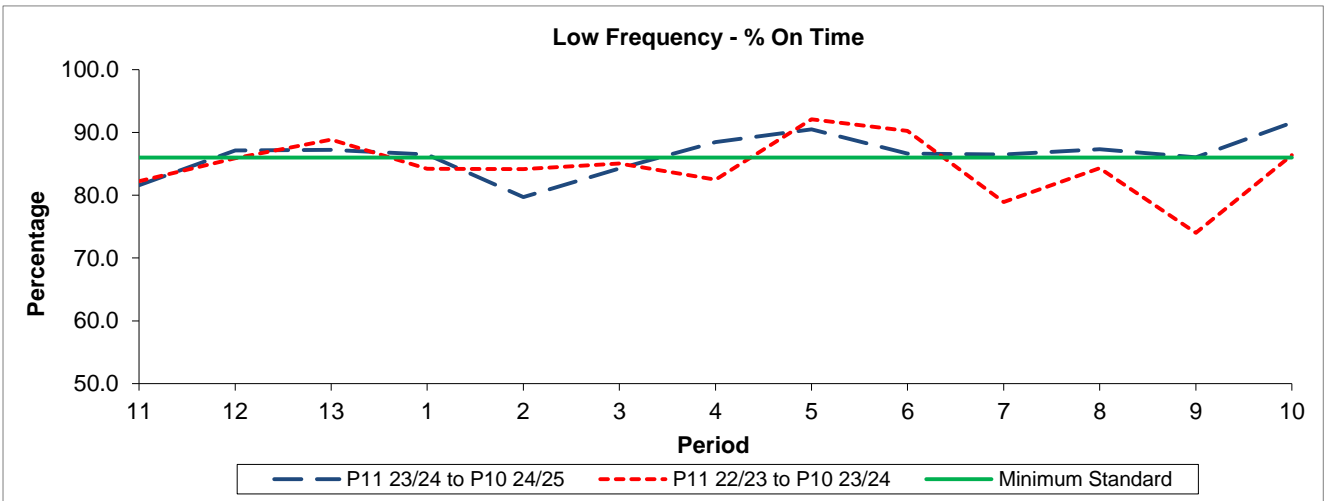


QSI & Mileage Performance Results

# Route 467

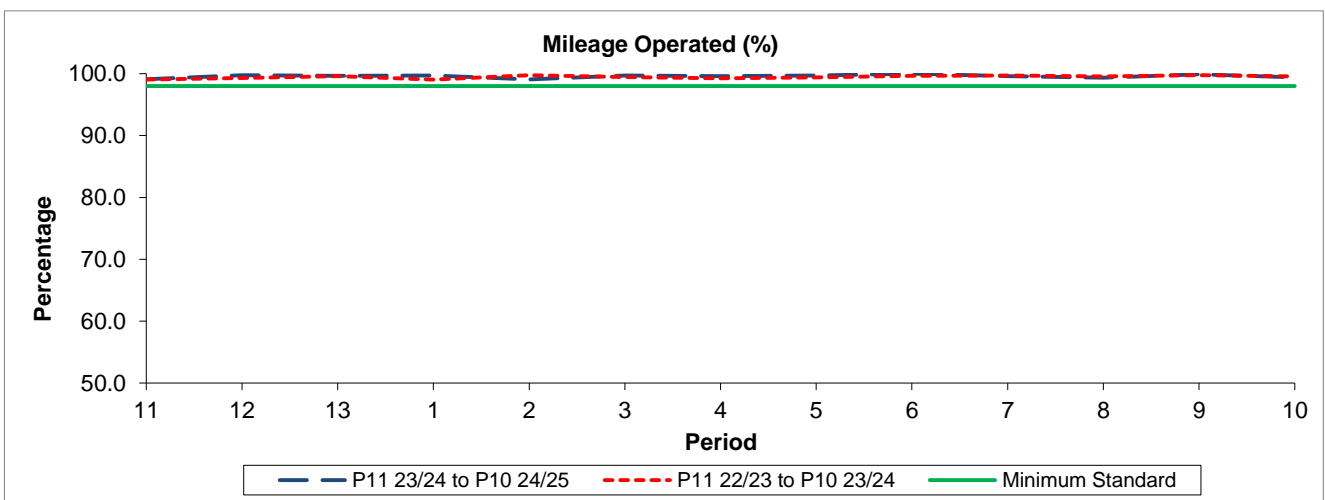
## Reliability Performance



Period	11	12	13	1	2	3	4	5	6	7	8	9	10
P11 23/24 to P10 24/25	81.60	87.11	87.21	86.50	79.70	84.24	88.47	90.47	86.63	86.48	87.34	86.04	91.55
P11 22/23 to P10 23/24	82.25	85.88	88.86	84.23	84.17	85.06	82.50	92.09	90.23	78.91	84.33	74.01	86.38
Minimum Standard	86.00	86.00	86.00	86.00	86.00	86.00	86.00	86.00	86.00	86.00	86.00	86.00	86.00

% On Time performance figures are based on four weeks data

## Mileage Performance



Period	11	12	13	1	2	3	4	5	6	7	8	9	10
P11 23/24 to P10 24/25	99.10	99.75	99.65	99.69	99.07	99.71	99.61	99.69	100.00	99.58	99.34	99.91	99.40
P11 22/23 to P10 23/24	99.06	99.29	99.58	99.04	99.73	99.43	99.24	99.39	99.65	99.72	99.53	99.76	99.53
Minimum Standard	98.00	98.00	98.00	98.00	98.00	98.00	98.00	98.00	98.00	98.00	98.00	98.00	98.00

Mileage Performance figures are based on four weeks data