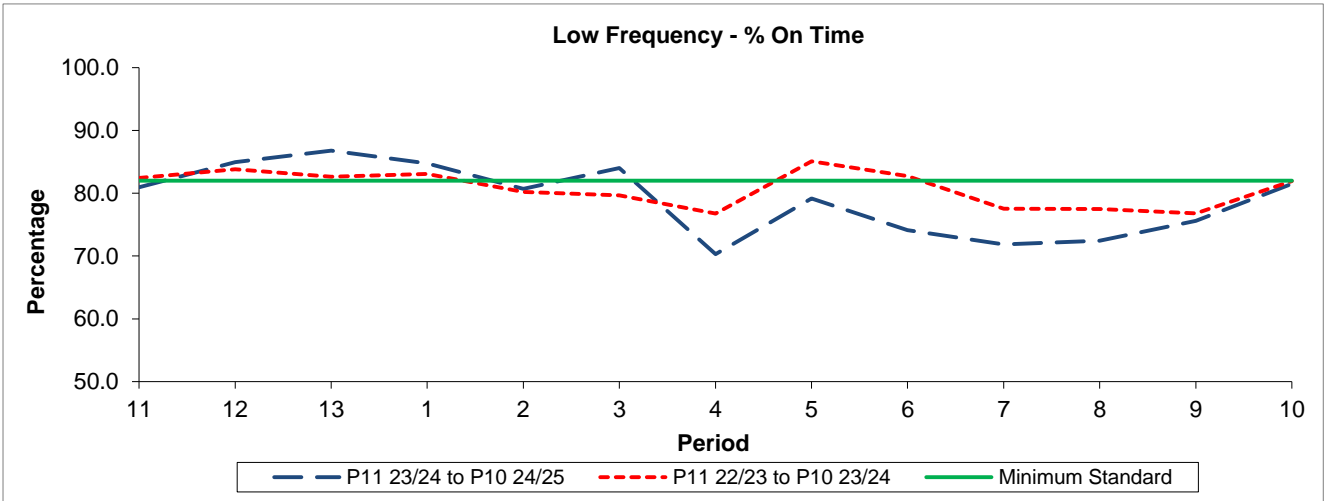


QSI & Mileage Performance Results

Route 465

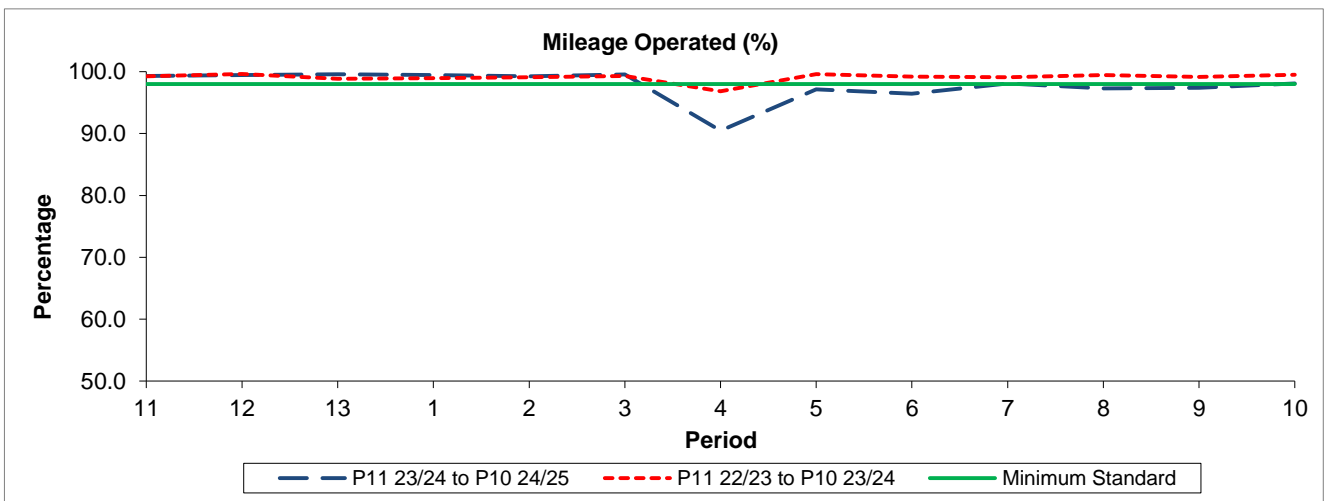
Reliability Performance



Period	11	12	13	1	2	3	4	5	6	7	8	9	10
P11 23/24 to P10 24/25	80.94	84.93	86.78	84.76	80.72	84.02	70.30	79.14	74.14	71.86	72.42	75.61	81.51
P11 22/23 to P10 23/24	82.45	83.81	82.63	83.07	80.22	79.65	76.76	85.08	82.73	77.53	77.49	76.79	81.93
Minimum Standard	82.00	82.00	82.00	82.00	82.00	82.00	82.00	82.00	82.00	82.00	82.00	82.00	82.00

% On Time performance figures are based on four weeks data

Mileage Performance



Period	11	12	13	1	2	3	4	5	6	7	8	9	10
P11 23/24 to P10 24/25	99.31	99.43	99.58	99.43	99.26	99.53	90.46	97.12	96.46	98.09	97.31	97.37	98.11
P11 22/23 to P10 23/24	99.24	99.62	98.83	98.96	99.12	99.31	96.83	99.58	99.17	99.11	99.47	99.17	99.52
Minimum Standard	98.00	98.00	98.00	98.00	98.00	98.00	98.00	98.00	98.00	98.00	98.00	98.00	98.00

Mileage Performance figures are based on four weeks data