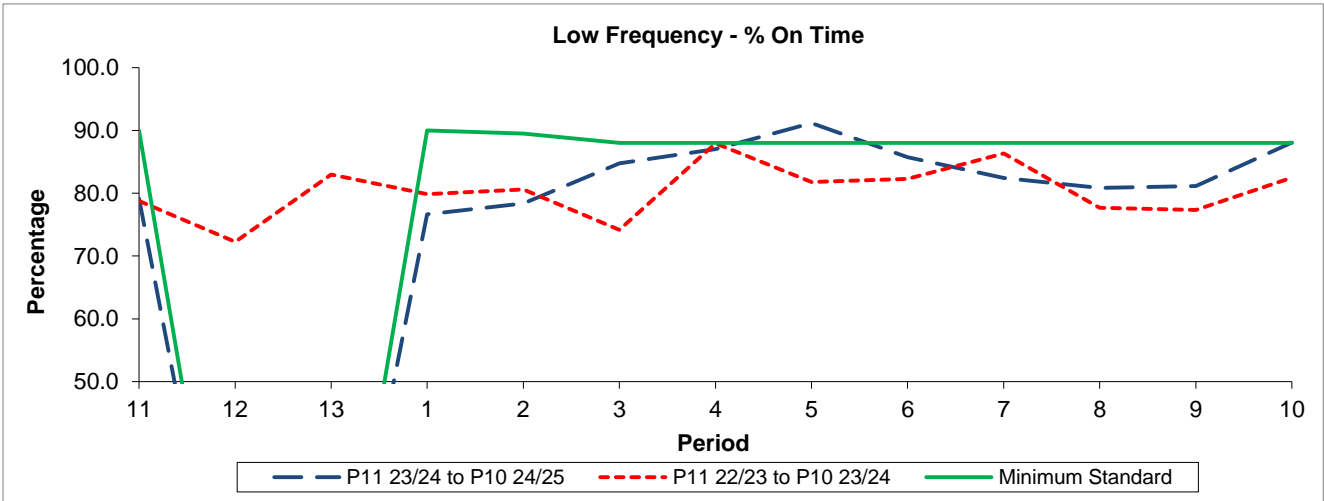


QSI & Mileage Performance Results

# Route 464

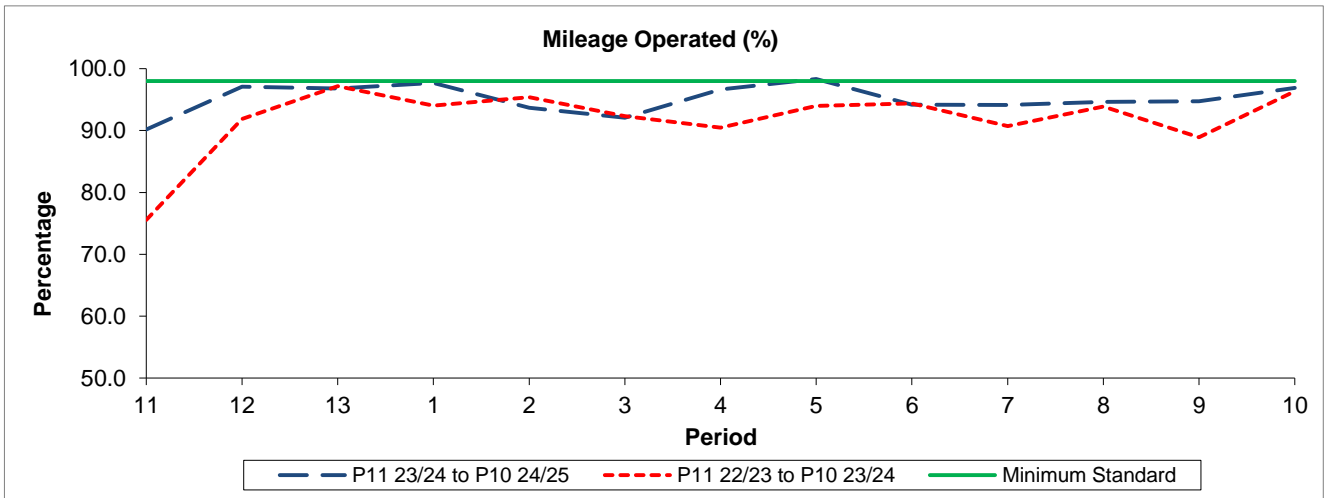
## Reliability Performance



Period	11	12	13	1	2	3	4	5	6	7	8	9	10
P11 23/24 to P10 24/25	79.15			76.67	78.35	84.77	87.03	91.17	85.75	82.44	80.85	81.13	88.08
P11 22/23 to P10 23/24	78.77	72.26	82.96	79.86	80.62	74.17	87.94	81.80	82.28	86.33	77.68	77.35	82.46
Minimum Standard	90.00			90.00	89.49	88.00	88.00	88.00	88.00	88.00	88.00	88.00	88.00

% On Time performance figures are based on four weeks data

## Mileage Performance



Period	11	12	13	1	2	3	4	5	6	7	8	9	10
P11 23/24 to P10 24/25	90.16	97.08	96.79	97.68	93.66	92.09	96.66	98.33	94.20	94.14	94.61	94.74	96.89
P11 22/23 to P10 23/24	75.56	91.87	97.16	94.05	95.38	92.34	90.45	93.96	94.36	90.72	93.88	88.90	96.33
Minimum Standard	98.00	98.00	98.00	98.00	98.00	98.00	98.00	98.00	98.00	98.00	98.00	98.00	98.00

Mileage Performance figures are based on four weeks data