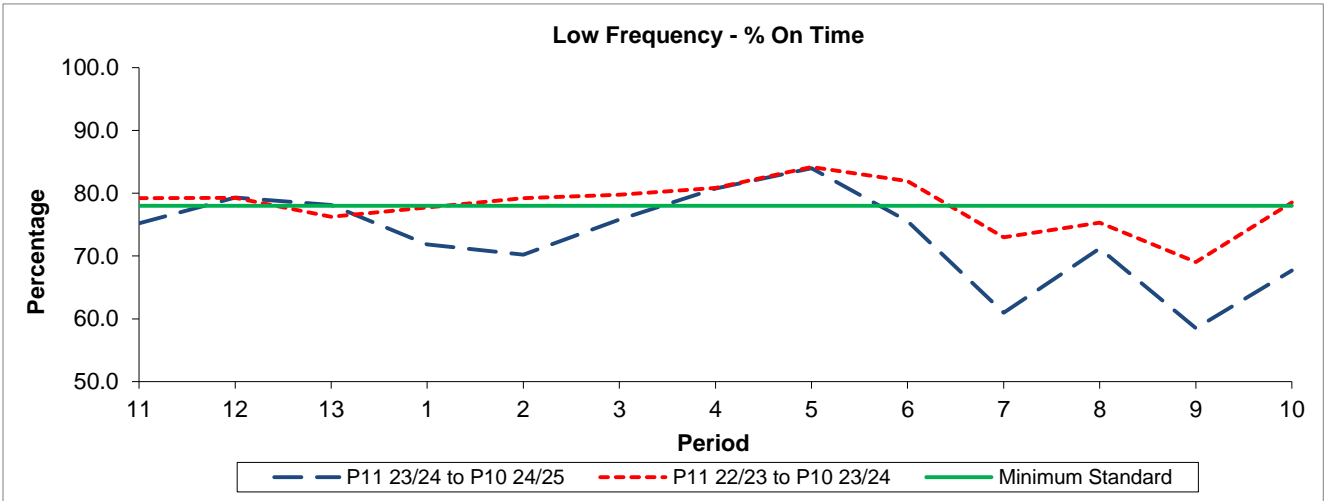


QSI & Mileage Performance Results

# Route 463

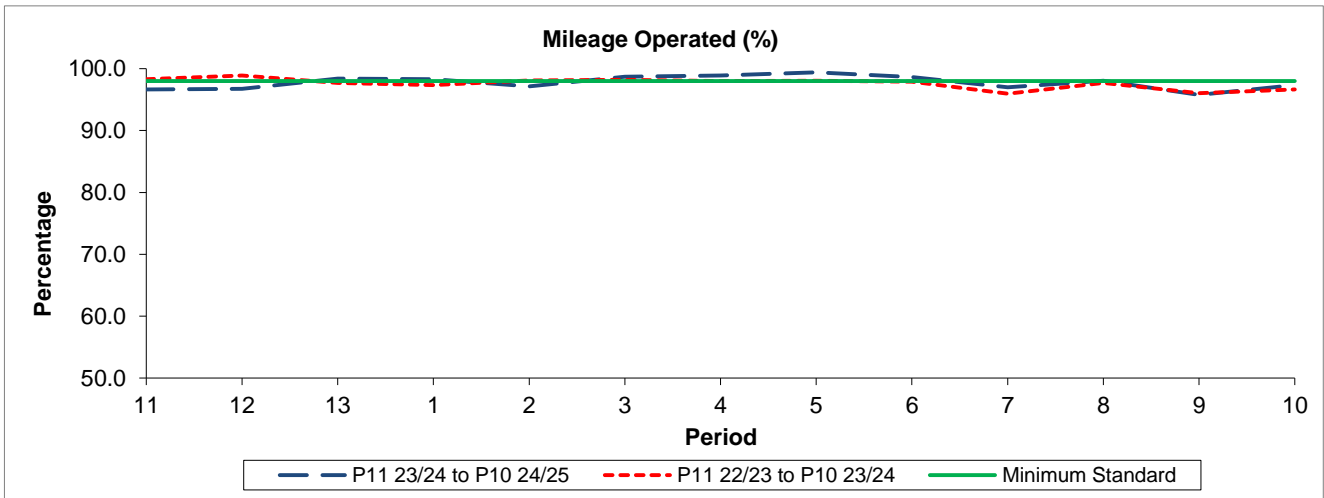
## Reliability Performance



Period	11	12	13	1	2	3	4	5	6	7	8	9	10
P11 23/24 to P10 24/25	75.21	79.31	78.13	71.83	70.22	75.80	80.73	83.98	75.56	60.97	71.19	58.51	67.69
P11 22/23 to P10 23/24	79.22	79.29	76.27	77.76	79.22	79.77	80.83	84.17	81.91	72.97	75.29	69.05	78.50
Minimum Standard	78.00	78.00	78.00	78.00	78.00	78.00	78.00	78.00	78.00	78.00	78.00	78.00	78.00

% On Time performance figures are based on four weeks data

## Mileage Performance



Period	11	12	13	1	2	3	4	5	6	7	8	9	10
P11 23/24 to P10 24/25	96.64	96.76	98.40	98.29	97.15	98.72	98.90	99.40	98.67	97.00	98.03	95.77	97.32
P11 22/23 to P10 23/24	98.28	98.89	97.67	97.33	98.11	98.21	98.00	98.05	97.92	95.95	97.68	96.03	96.62
Minimum Standard	98.00	98.00	98.00	98.00	98.00	98.00	98.00	98.00	98.00	98.00	98.00	98.00	98.00

Mileage Performance figures are based on four weeks data