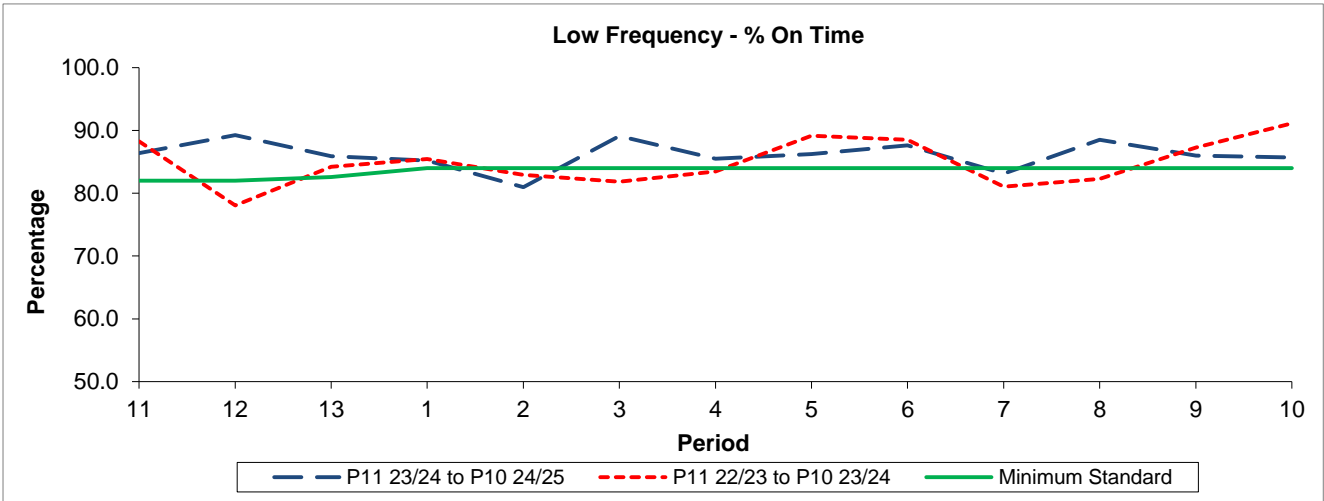


QSI & Mileage Performance Results

Route 462

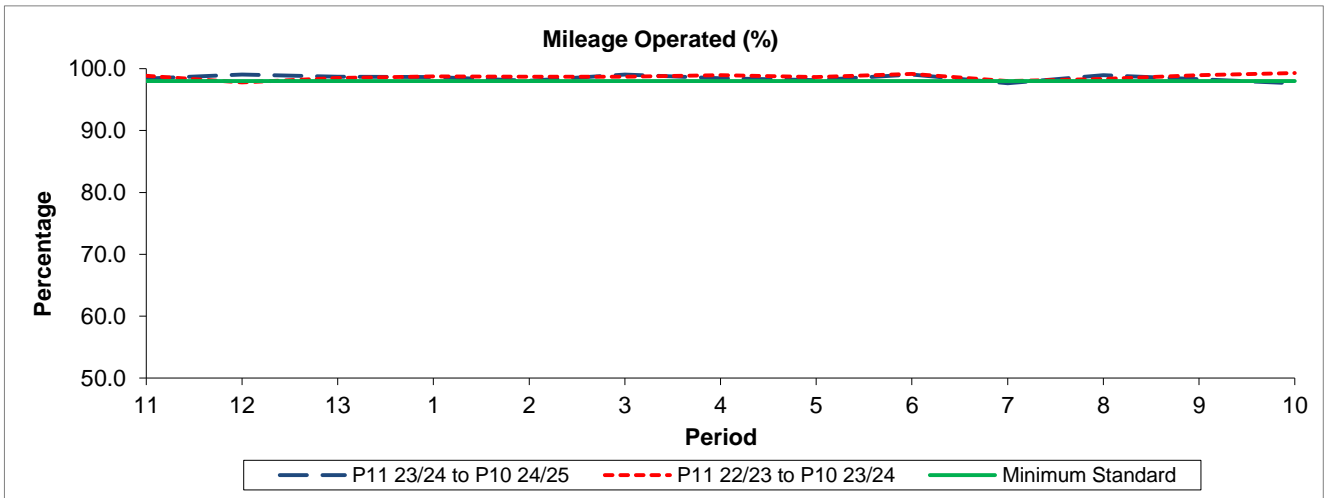
Reliability Performance



Period	11	12	13	1	2	3	4	5	6	7	8	9	10
P11 23/24 to P10 24/25	86.41	89.26	85.91	85.21	80.97	89.09	85.51	86.24	87.65	83.13	88.52	86.01	85.71
P11 22/23 to P10 23/24	88.24	78.06	84.23	85.46	82.91	81.83	83.49	89.13	88.50	81.06	82.28	87.29	91.13
Minimum Standard	82.00	82.00	82.57	84.00	84.00	84.00	84.00	84.00	84.00	84.00	84.00	84.00	84.00

% On Time performance figures are based on four weeks data

Mileage Performance



Period	11	12	13	1	2	3	4	5	6	7	8	9	10
P11 23/24 to P10 24/25	98.39	99.05	98.68	98.63	98.04	99.05	98.44	98.13	99.03	97.65	98.93	98.29	97.63
P11 22/23 to P10 23/24	98.85	97.78	98.52	98.76	98.68	98.71	98.97	98.65	99.14	97.98	98.37	98.97	99.29
Minimum Standard	98.00	98.00	98.00	98.00	98.00	98.00	98.00	98.00	98.00	98.00	98.00	98.00	98.00

Mileage Performance figures are based on four weeks data