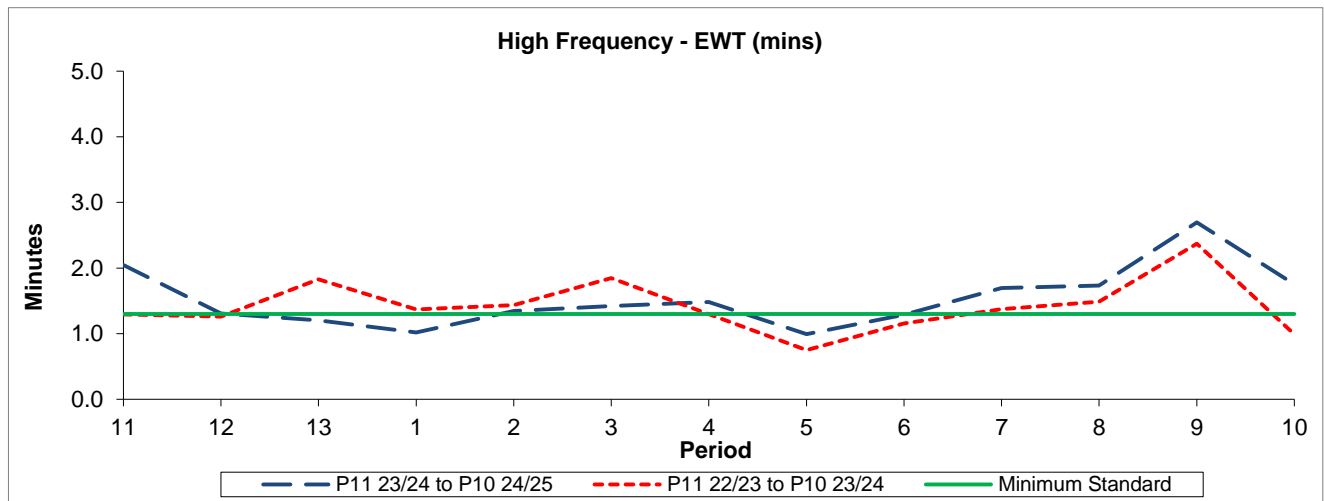


QSI & Mileage Performance Results

# Route 46

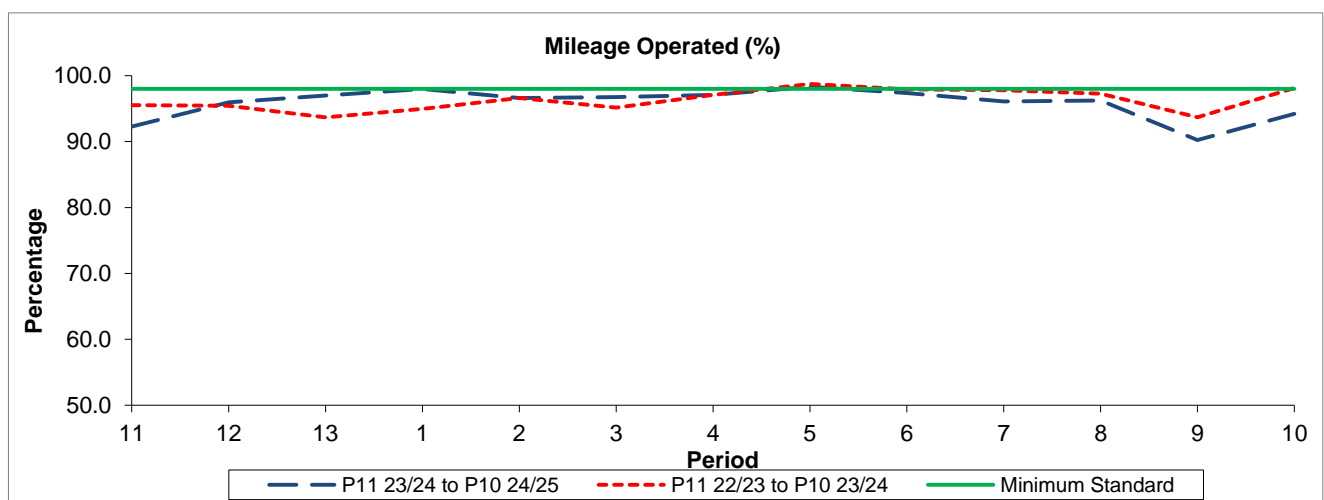
## Reliability Performance



Period	11	12	13	1	2	3	4	5	6	7	8	9	10
P11 23/24 to P10 24/25	2.05	1.31	1.20	1.02	1.34	1.42	1.48	0.99	1.29	1.70	1.73	2.70	1.75
P11 22/23 to P10 23/24	1.29	1.26	1.83	1.37	1.44	1.85	1.30	0.75	1.15	1.37	1.49	2.37	0.99
Minimum Standard	1.30	1.30	1.30	1.30	1.30	1.30	1.30	1.30	1.30	1.30	1.30	1.30	1.30

The EWT (mins) figures are based on four weeks data

## Mileage Performance



Period	11	12	13	1	2	3	4	5	6	7	8	9	10
P11 23/24 to P10 24/25	92.28	95.93	97.00	97.98	96.63	96.77	97.09	98.31	97.36	96.08	96.24	90.23	94.23
P11 22/23 to P10 23/24	95.50	95.43	93.67	94.95	96.62	95.14	97.08	98.74	97.93	97.79	97.26	93.68	98.12
Minimum Standard	98.00	98.00	98.00	98.00	98.00	98.00	98.00	98.00	98.00	98.00	98.00	98.00	98.00

Mileage Performance figures are based on four weeks data