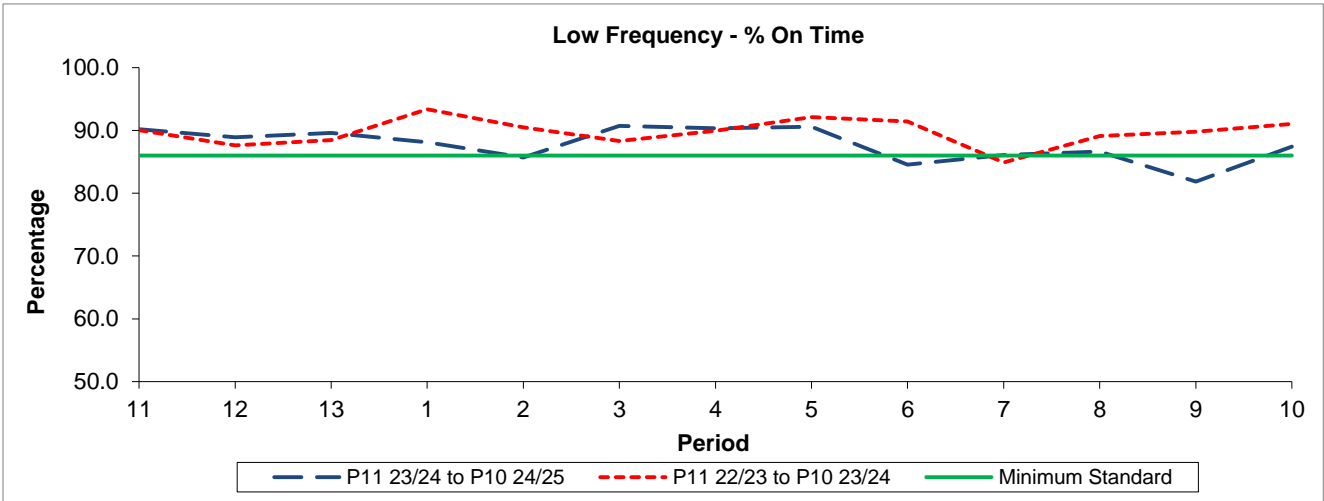


QSI & Mileage Performance Results

# Route 423

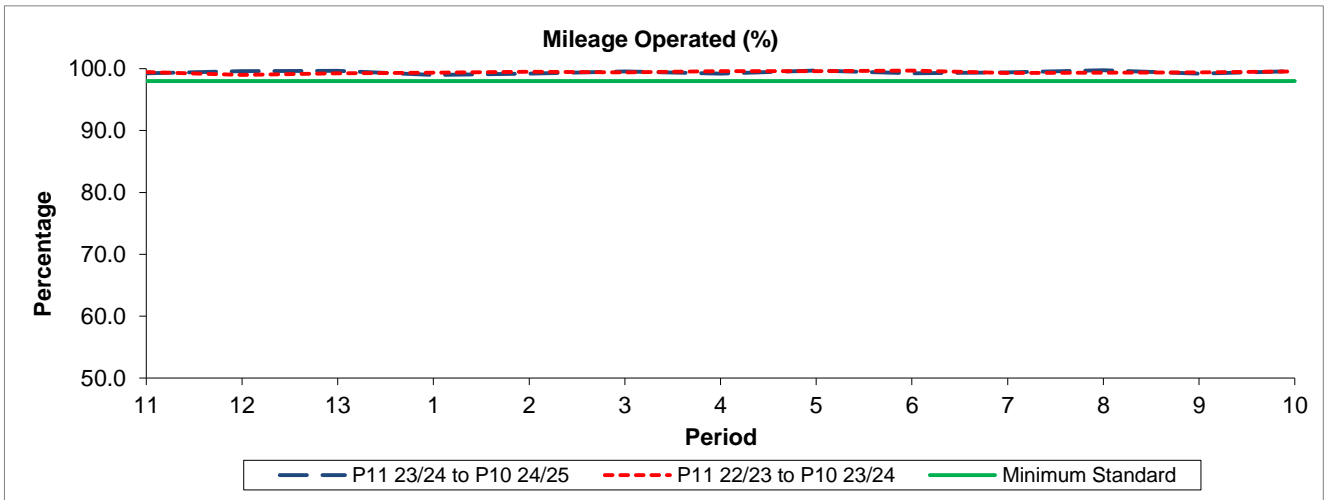
## Reliability Performance



Period	11	12	13	1	2	3	4	5	6	7	8	9	10
P11 23/24 to P10 24/25	90.19	88.93	89.60	88.11	85.68	90.72	90.32	90.59	84.57	86.10	86.64	81.86	87.42
P11 22/23 to P10 23/24	90.05	87.60	88.48	93.37	90.47	88.31	89.97	92.15	91.45	84.90	89.09	89.80	91.05
Minimum Standard	86.00	86.00	86.00	86.00	86.00	86.00	86.00	86.00	86.00	86.00	86.00	86.00	86.00

% On Time performance figures are based on four weeks data

## Mileage Performance



Period	11	12	13	1	2	3	4	5	6	7	8	9	10
P11 23/24 to P10 24/25	99.26	99.59	99.63	98.98	99.21	99.55	99.19	99.72	99.26	99.40	99.75	99.18	99.61
P11 22/23 to P10 23/24	99.46	98.99	99.26	99.34	99.51	99.39	99.60	99.61	99.69	99.30	99.37	99.38	99.53
Minimum Standard	98.00	98.00	98.00	98.00	98.00	98.00	98.00	98.00	98.00	98.00	98.00	98.00	98.00

Mileage Performance figures are based on four weeks data