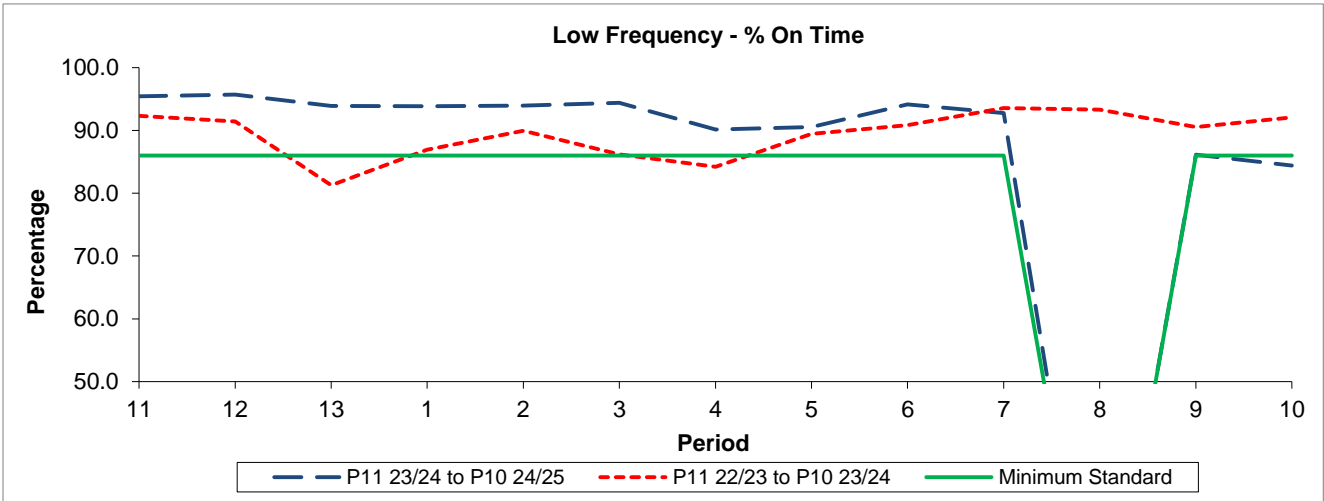


QSI & Mileage Performance Results

# Route 411

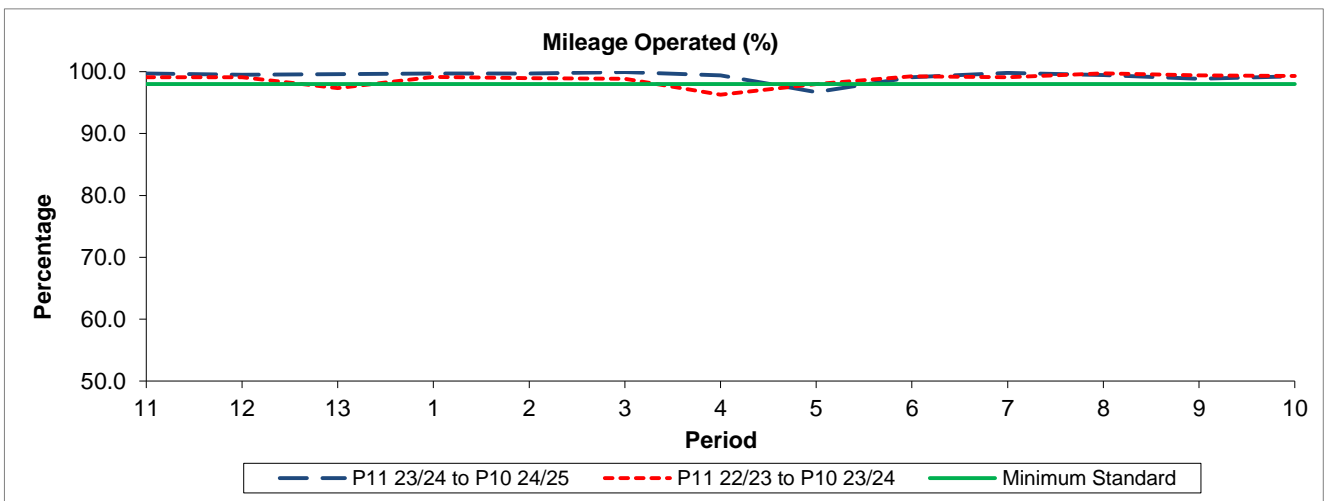
## Reliability Performance



Period	11	12	13	1	2	3	4	5	6	7	8	9	10
P11 23/24 to P10 24/25	95.46	95.71	93.89	93.83	93.94	94.39	90.17	90.56	94.15	92.76		86.13	84.43
P11 22/23 to P10 23/24	92.33	91.43	81.27	86.93	89.94	86.21	84.20	89.46	90.82	93.56	93.32	90.52	92.05
Minimum Standard	86.00	86.00	86.00	86.00	86.00	86.00	86.00	86.00	86.00	86.00		86.00	86.00

% On Time performance figures are based on four weeks data

## Mileage Performance



Period	11	12	13	1	2	3	4	5	6	7	8	9	10
P11 23/24 to P10 24/25	99.69	99.48	99.60	99.70	99.68	99.93	99.42	96.70	99.10	99.80	99.43	98.86	99.24
P11 22/23 to P10 23/24	99.10	99.09	97.32	99.13	98.95	98.84	96.28	98.01	99.24	99.12	99.73	99.38	99.32
Minimum Standard	98.00	98.00	98.00	98.00	98.00	98.00	98.00	98.00	98.00	98.00	98.00	98.00	98.00

Mileage Performance figures are based on four weeks data