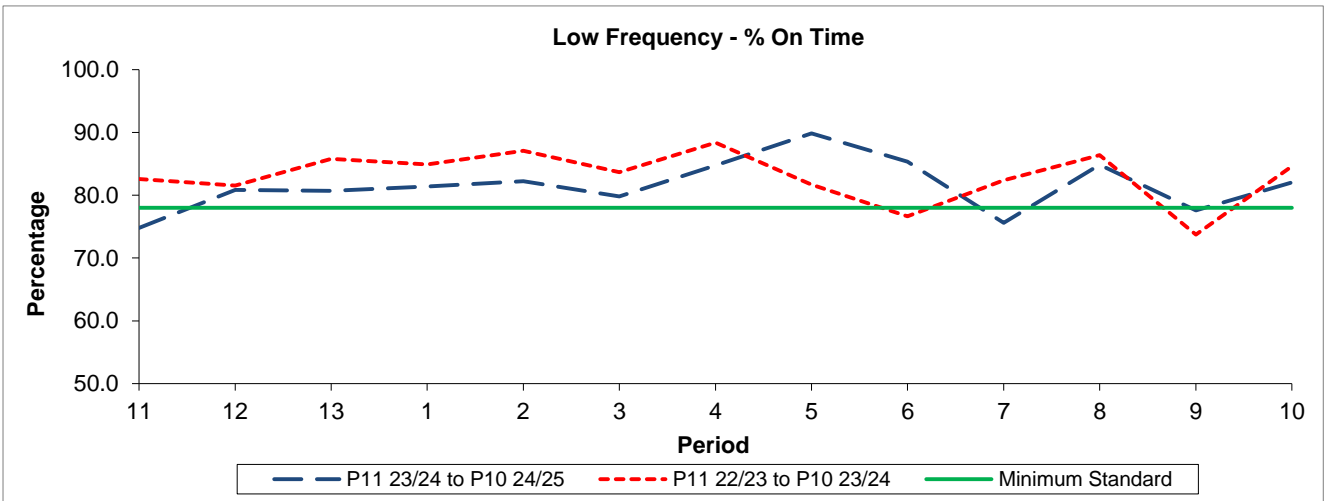


QSI & Mileage Performance Results

Route 405

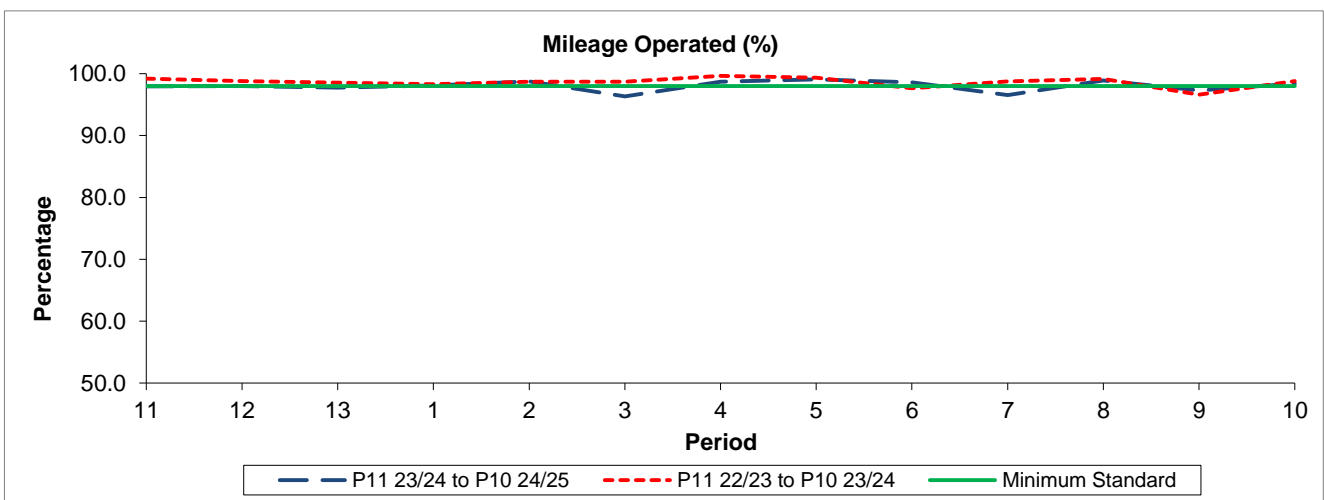
Reliability Performance



Period	11	12	13	1	2	3	4	5	6	7	8	9	10
P11 23/24 to P10 24/25	74.79	80.83	80.69	81.37	82.23	79.79	84.74	89.85	85.33	75.62	84.86	77.59	82.04
P11 22/23 to P10 23/24	82.56	81.53	85.78	84.93	87.10	83.65	88.38	81.68	76.66	82.37	86.38	73.73	84.59
Minimum Standard	78.00	78.00	78.00	78.00	78.00	78.00	78.00	78.00	78.00	78.00	78.00	78.00	78.00

% On Time performance figures are based on four weeks data

Mileage Performance



Period	11	12	13	1	2	3	4	5	6	7	8	9	10
P11 23/24 to P10 24/25	97.94	97.97	97.75	98.08	98.72	96.33	98.71	99.08	98.58	96.55	98.91	97.27	98.40
P11 22/23 to P10 23/24	99.20	98.79	98.56	98.28	98.68	98.72	99.64	99.37	97.66	98.73	99.15	96.61	98.81
Minimum Standard	98.00	98.00	98.00	98.00	98.00	98.00	98.00	98.00	98.00	98.00	98.00	98.00	98.00

Mileage Performance figures are based on four weeks data