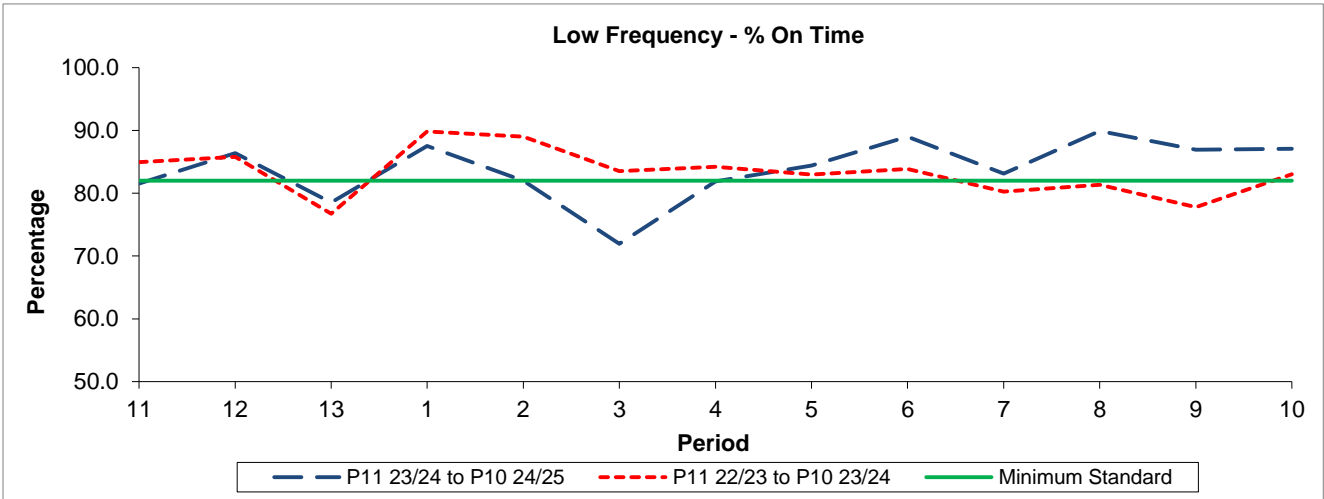


QSI & Mileage Performance Results

Route 398

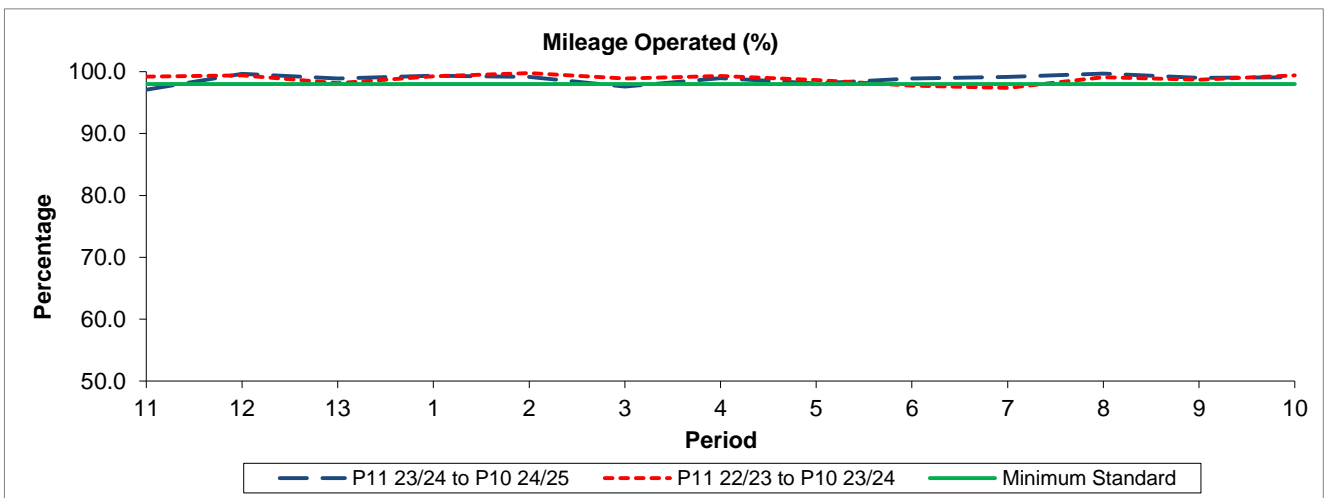
Reliability Performance



Period	11	12	13	1	2	3	4	5	6	7	8	9	10
P11 23/24 to P10 24/25	81.56	86.36	78.53	87.51	82.01	71.95	81.91	84.43	89.01	83.14	89.90	86.92	87.09
P11 22/23 to P10 23/24	84.97	85.81	76.74	89.84	89.00	83.50	84.19	82.99	83.85	80.26	81.32	77.77	83.05
Minimum Standard	82.00	82.00	82.00	82.00	82.00	82.00	82.00	82.00	82.00	82.00	82.00	82.00	82.00

% On Time performance figures are based on four weeks data

Mileage Performance



Period	11	12	13	1	2	3	4	5	6	7	8	9	10
P11 23/24 to P10 24/25	97.08	99.65	98.91	99.36	99.14	97.58	98.96	98.10	98.92	99.15	99.69	99.01	99.10
P11 22/23 to P10 23/24	99.18	99.40	98.13	99.27	99.77	98.92	99.28	98.63	97.76	97.37	99.11	98.69	99.38
Minimum Standard	98.00	98.00	98.00	98.00	98.00	98.00	98.00	98.00	98.00	98.00	98.00	98.00	98.00

Mileage Performance figures are based on four weeks data