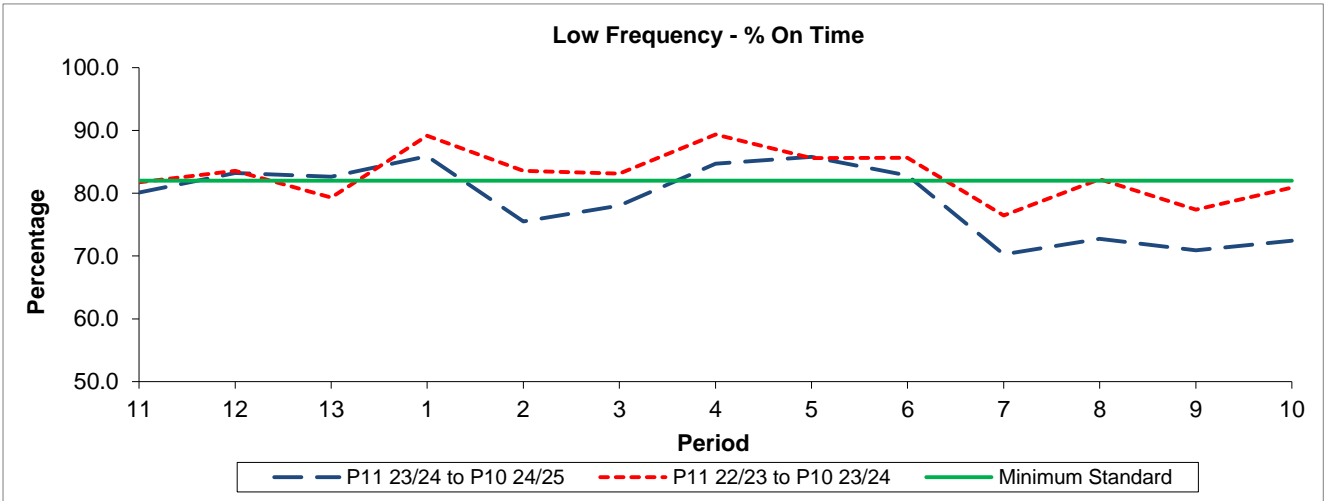


QSI & Mileage Performance Results

Route 397

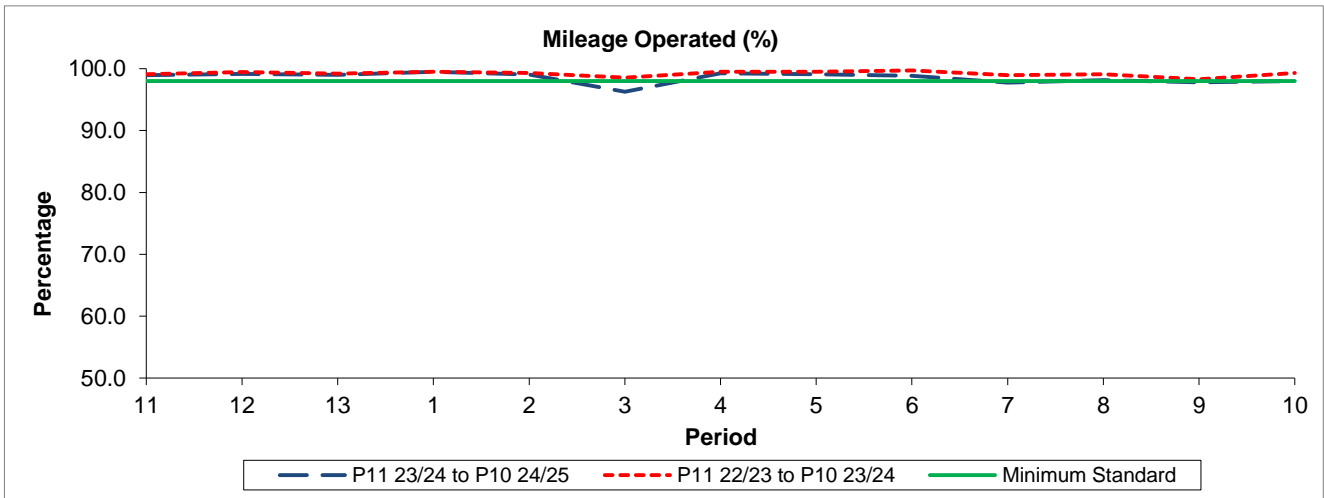
Reliability Performance



Period	11	12	13	1	2	3	4	5	6	7	8	9	10
P11 23/24 to P10 24/25	80.10	83.21	82.63	85.90	75.53	78.04	84.71	85.80	82.84	70.28	72.75	70.92	72.43
P11 22/23 to P10 23/24	81.75	83.59	79.34	89.16	83.57	83.13	89.35	85.57	85.65	76.46	82.21	77.38	80.92
Minimum Standard	82.00	82.00	82.00	82.00	82.00	82.00	82.00	82.00	82.00	82.00	82.00	82.00	82.00

% On Time performance figures are based on four weeks data

Mileage Performance



Period	11	12	13	1	2	3	4	5	6	7	8	9	10
P11 23/24 to P10 24/25	98.97	99.13	98.99	99.50	99.04	96.27	99.23	99.10	98.86	97.74	98.12	97.79	98.02
P11 22/23 to P10 23/24	99.10	99.46	99.22	99.49	99.28	98.52	99.51	99.51	99.71	98.93	99.10	98.29	99.32
Minimum Standard	98.00	98.00	98.00	98.00	98.00	98.00	98.00	98.00	98.00	98.00	98.00	98.00	98.00

Mileage Performance figures are based on four weeks data