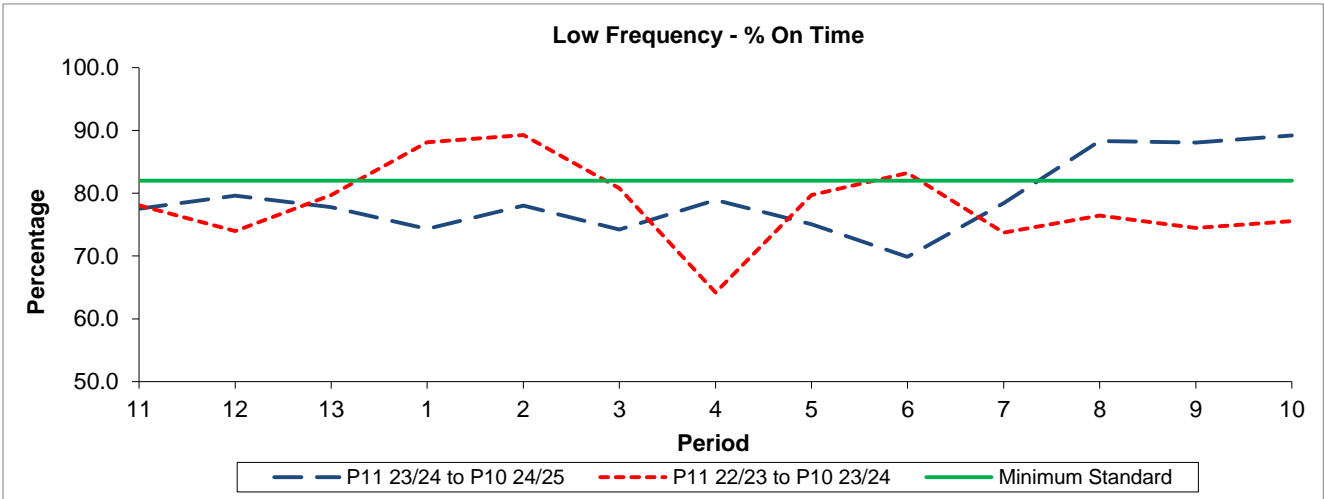


QSI & Mileage Performance Results

# Route 395

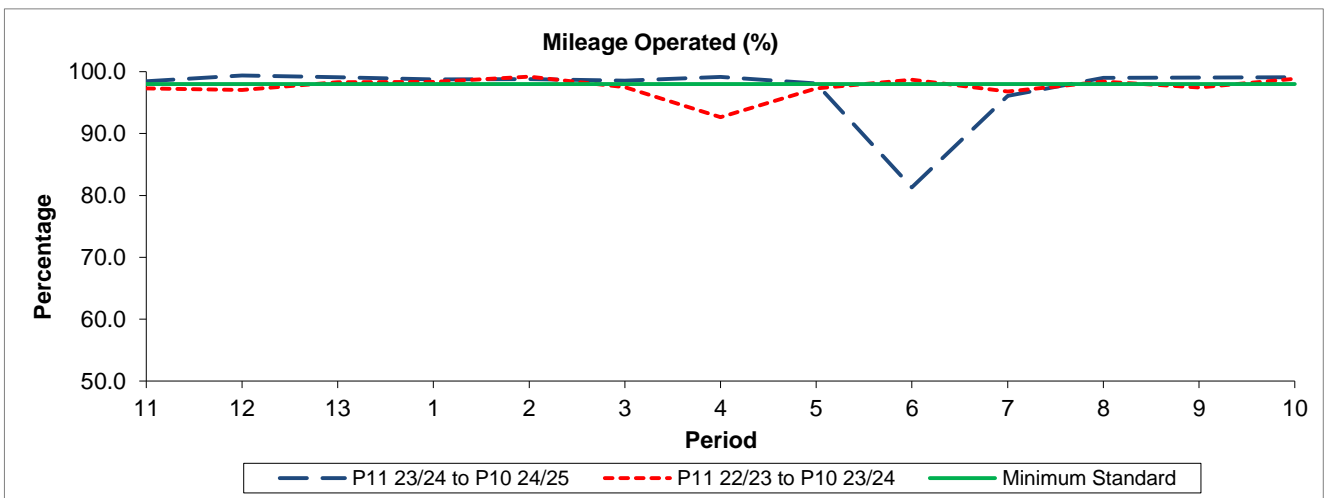
## Reliability Performance



Period	11	12	13	1	2	3	4	5	6	7	8	9	10
P11 23/24 to P10 24/25	77.54	79.62	77.79	74.30	78.05	74.20	78.94	75.08	69.87	78.44	88.32	88.08	89.20
P11 22/23 to P10 23/24	78.06	74.00	79.71	88.12	89.27	80.80	64.20	79.72	83.24	73.73	76.47	74.45	75.55
Minimum Standard	82.00	82.00	82.00	82.00	82.00	82.00	82.00	82.00	82.00	82.00	82.00	82.00	82.00

% On Time performance figures are based on four weeks data

## Mileage Performance



Period	11	12	13	1	2	3	4	5	6	7	8	9	10
P11 23/24 to P10 24/25	98.47	99.38	99.12	98.77	98.81	98.57	99.17	98.10	81.30	96.11	98.98	99.05	99.11
P11 22/23 to P10 23/24	97.29	97.02	98.30	98.37	99.19	97.51	92.65	97.27	98.69	96.81	98.41	97.43	98.85
Minimum Standard	98.00	98.00	98.00	98.00	98.00	98.00	98.00	98.00	98.00	98.00	98.00	98.00	98.00

Mileage Performance figures are based on four weeks data