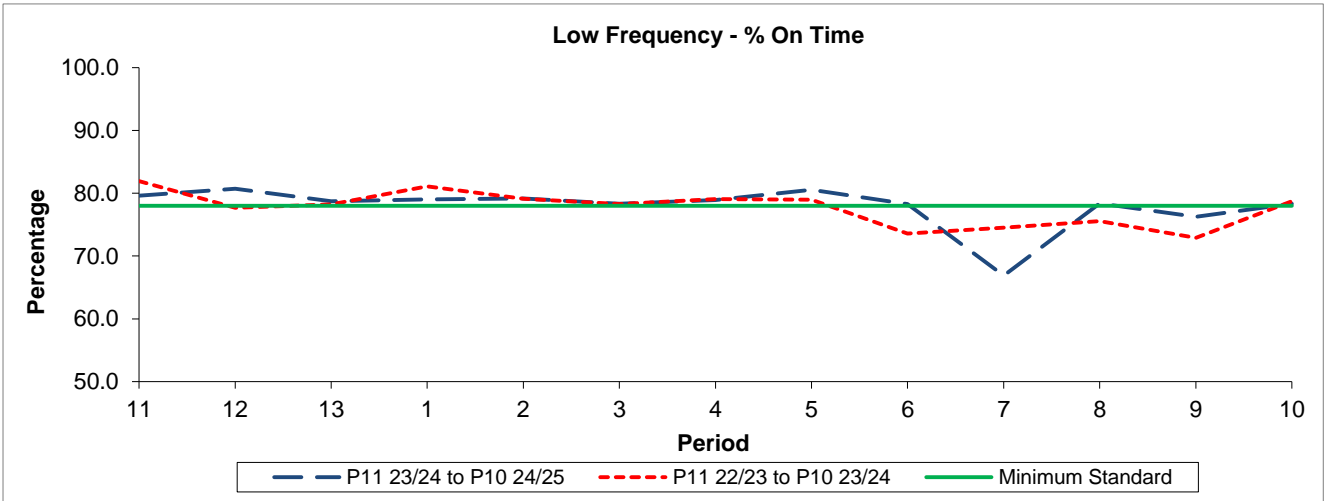


QSI & Mileage Performance Results

Route 386

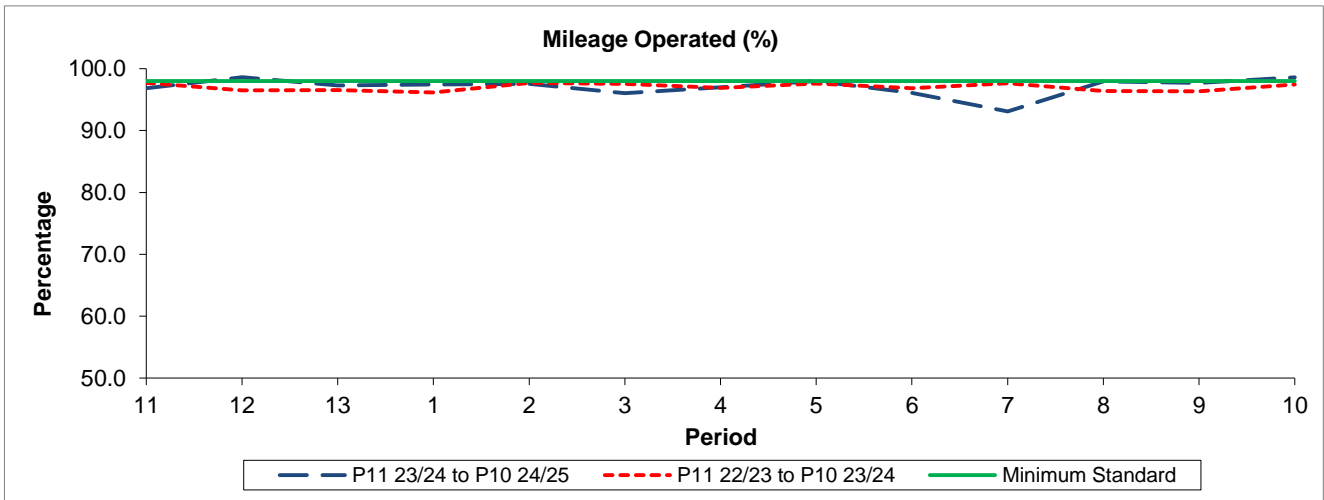
Reliability Performance



Period	11	12	13	1	2	3	4	5	6	7	8	9	10
P11 23/24 to P10 24/25	79.63	80.72	78.74	79.04	79.18	78.32	78.91	80.54	78.28	66.89	78.40	76.25	78.33
P11 22/23 to P10 23/24	81.93	77.70	78.22	81.11	79.14	78.28	79.06	78.95	73.58	74.50	75.57	72.90	78.74
Minimum Standard	78.00	78.00	78.00	78.00	78.00	78.00	78.00	78.00	78.00	78.00	78.00	78.00	78.00

% On Time performance figures are based on four weeks data

Mileage Performance



Period	11	12	13	1	2	3	4	5	6	7	8	9	10
P11 23/24 to P10 24/25	96.82	98.61	97.28	97.43	97.53	96.03	97.00	97.98	96.08	93.09	97.93	97.71	98.61
P11 22/23 to P10 23/24	97.71	96.51	96.53	96.15	97.67	97.54	96.89	97.62	96.85	97.67	96.41	96.34	97.45
Minimum Standard	98.00	98.00	98.00	98.00	98.00	98.00	98.00	98.00	98.00	98.00	98.00	98.00	98.00

Mileage Performance figures are based on four weeks data