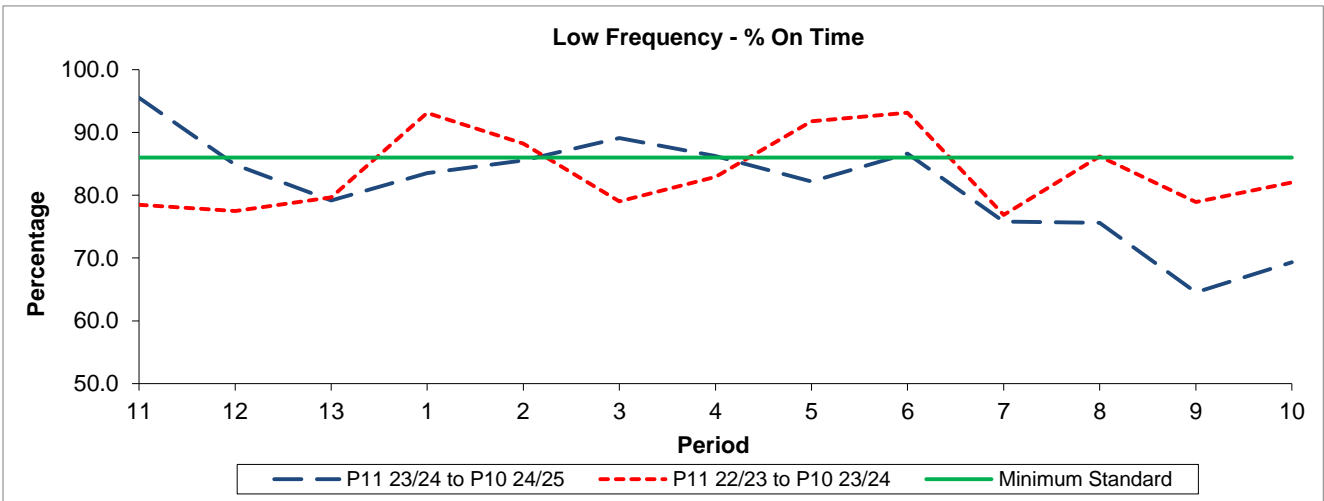


QSI & Mileage Performance Results

Route 385

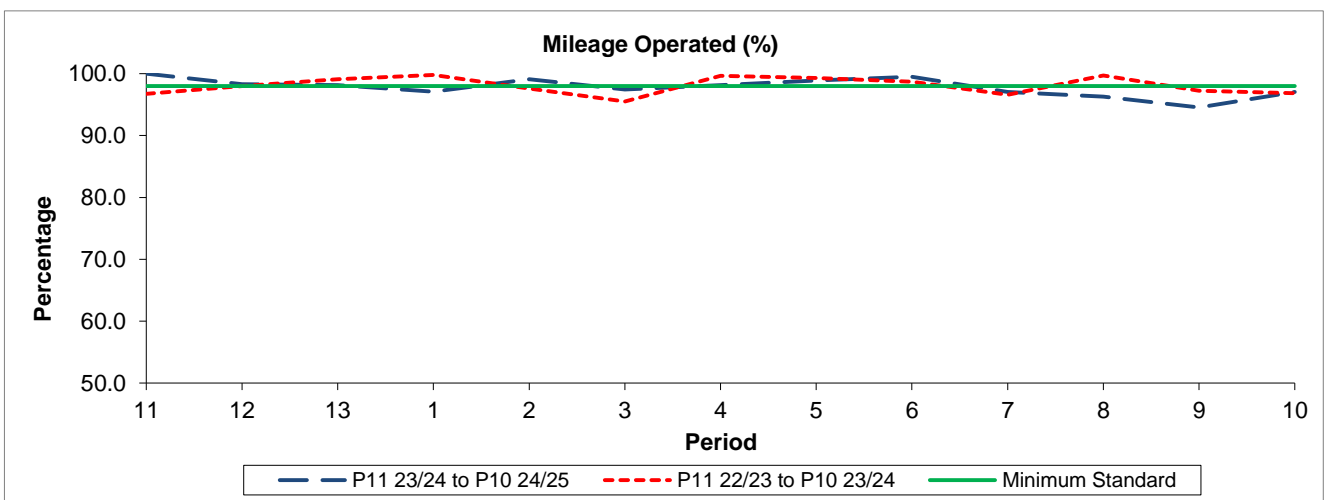
Reliability Performance



Period	11	12	13	1	2	3	4	5	6	7	8	9	10
P11 23/24 to P10 24/25	95.52	84.84	79.15	83.54	85.52	89.09	86.24	82.19	86.63	75.78	75.60	64.53	69.34
P11 22/23 to P10 23/24	78.49	77.48	79.66	93.13	88.20	79.00	82.91	91.78	93.14	76.87	86.19	78.92	82.06
Minimum Standard	86.00	86.00	86.00	86.00	86.00	86.00	86.00	86.00	86.00	86.00	86.00	86.00	86.00

% On Time performance figures are based on four weeks data

Mileage Performance



Period	11	12	13	1	2	3	4	5	6	7	8	9	10
P11 23/24 to P10 24/25	100.00	98.28	98.16	97.10	99.12	97.46	98.13	98.88	99.49	97.02	96.30	94.54	97.06
P11 22/23 to P10 23/24	96.72	98.01	99.10	99.79	97.58	95.50	99.64	99.31	98.71	96.60	99.69	97.22	96.85
Minimum Standard	98.00	98.00	98.00	98.00	98.00	98.00	98.00	98.00	98.00	98.00	98.00	98.00	98.00

Mileage Performance figures are based on four weeks data