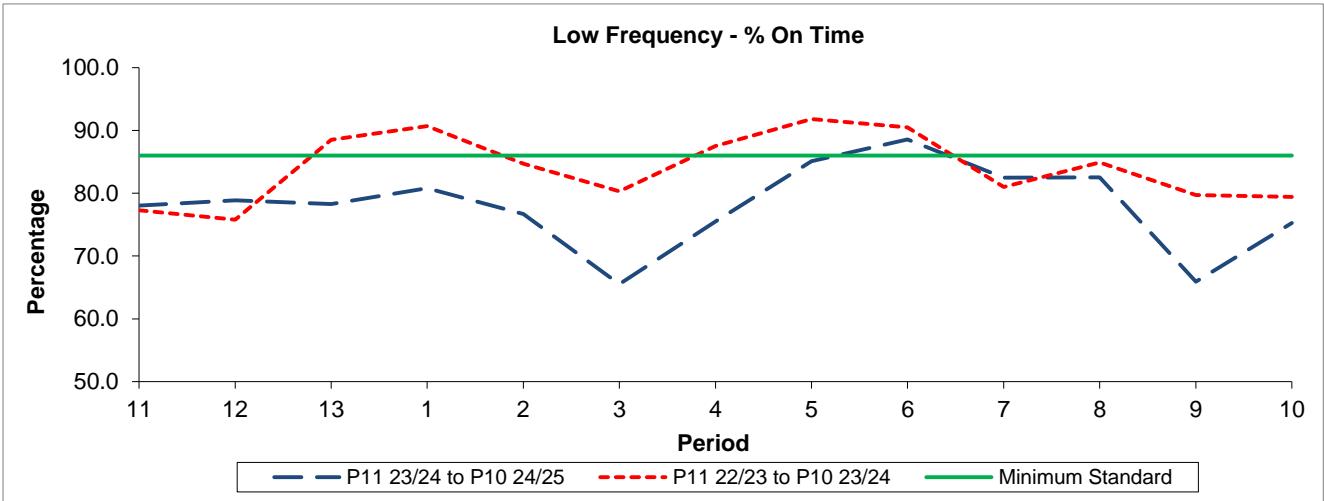


QSI & Mileage Performance Results

Route 379

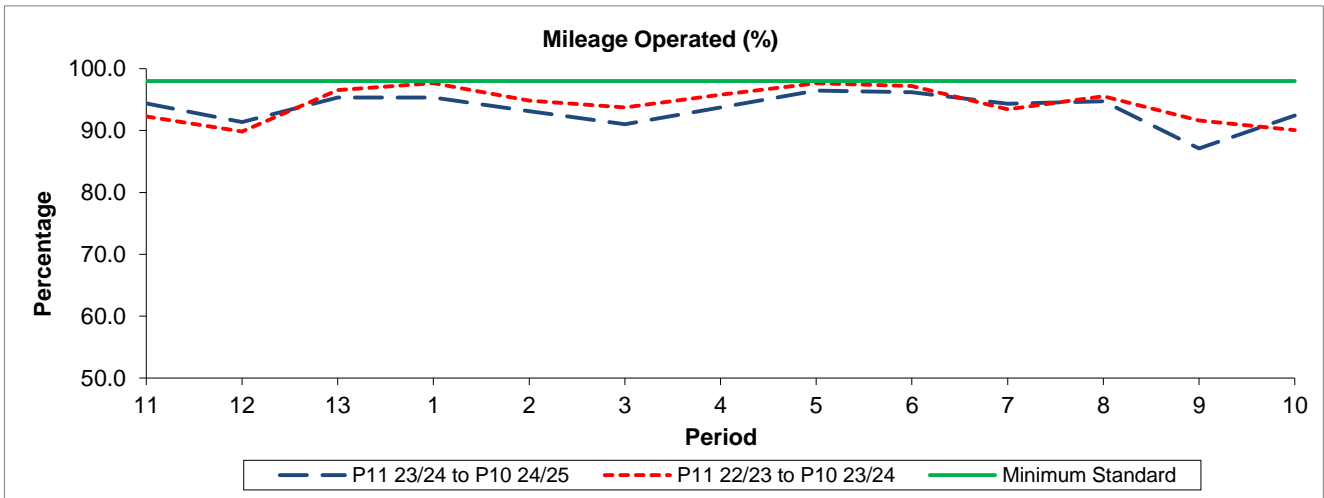
Reliability Performance



Period	11	12	13	1	2	3	4	5	6	7	8	9	10
P11 23/24 to P10 24/25	78.03	78.88	78.27	80.79	76.71	65.52	75.50	85.09	88.57	82.46	82.53	65.92	75.25
P11 22/23 to P10 23/24	77.31	75.79	88.50	90.70	84.71	80.30	87.51	91.81	90.51	81.00	84.90	79.69	79.41
Minimum Standard	86.00	86.00	86.00	86.00	86.00	86.00	86.00	86.00	86.00	86.00	86.00	86.00	86.00

% On Time performance figures are based on four weeks data

Mileage Performance



Period	11	12	13	1	2	3	4	5	6	7	8	9	10
P11 23/24 to P10 24/25	94.37	91.39	95.32	95.33	93.11	91.03	93.75	96.46	96.20	94.33	94.73	87.10	92.41
P11 22/23 to P10 23/24	92.29	89.84	96.53	97.66	94.81	93.74	95.78	97.64	97.21	93.45	95.55	91.60	90.08
Minimum Standard	98.00	98.00	98.00	98.00	98.00	98.00	98.00	98.00	98.00	98.00	98.00	98.00	98.00

Mileage Performance figures are based on four weeks data