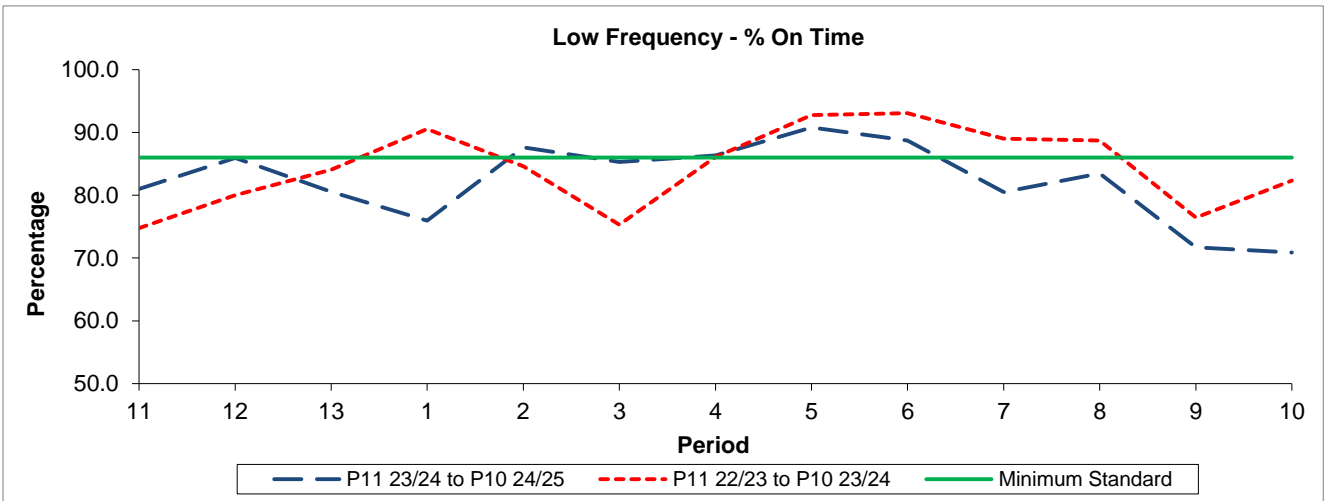


QSI & Mileage Performance Results

Route 377

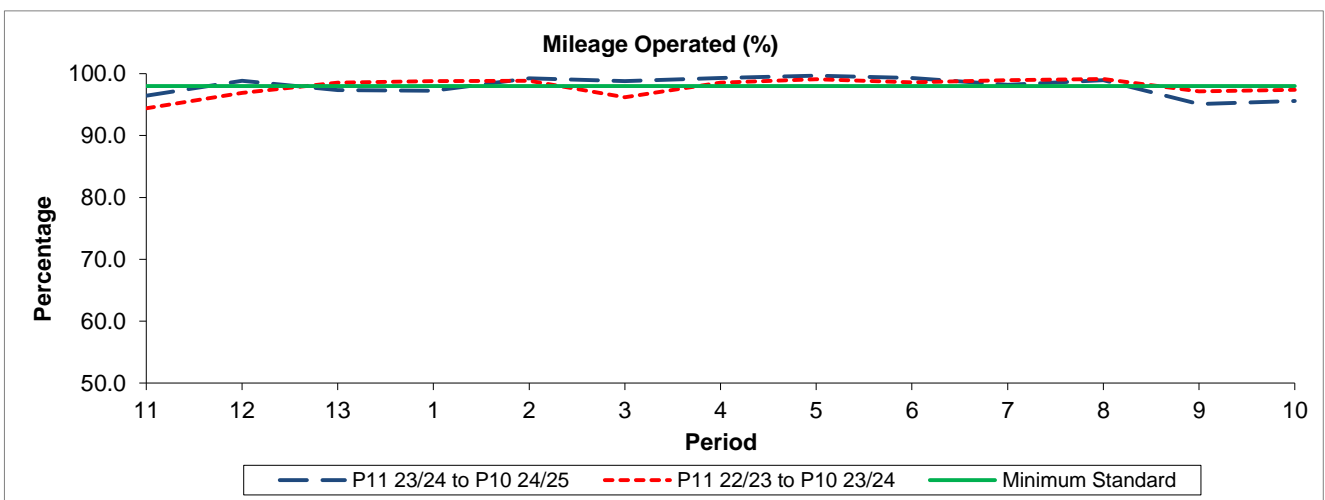
Reliability Performance



Period	11	12	13	1	2	3	4	5	6	7	8	9	10
P11 23/24 to P10 24/25	81.02	85.92	80.55	75.94	87.64	85.29	86.32	90.79	88.71	80.51	83.46	71.72	70.88
P11 22/23 to P10 23/24	74.77	80.01	84.06	90.55	84.61	75.29	86.10	92.79	93.07	89.00	88.74	76.43	82.34
Minimum Standard	86.00	86.00	86.00	86.00	86.00	86.00	86.00	86.00	86.00	86.00	86.00	86.00	86.00

% On Time performance figures are based on four weeks data

Mileage Performance



Period	11	12	13	1	2	3	4	5	6	7	8	9	10
P11 23/24 to P10 24/25	96.42	98.84	97.32	97.25	99.23	98.79	99.29	99.68	99.31	98.19	98.93	95.09	95.56
P11 22/23 to P10 23/24	94.40	96.89	98.53	98.78	98.86	96.18	98.53	99.08	98.59	98.92	99.14	97.16	97.42
Minimum Standard	98.00	98.00	98.00	98.00	98.00	98.00	98.00	98.00	98.00	98.00	98.00	98.00	98.00

Mileage Performance figures are based on four weeks data