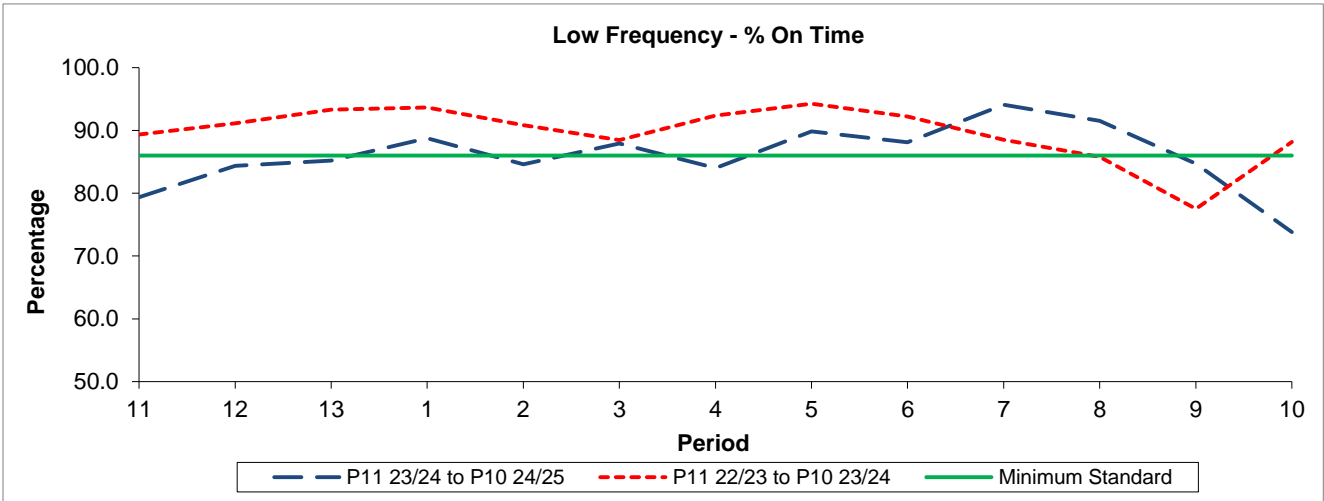


QSI & Mileage Performance Results

# Route 375

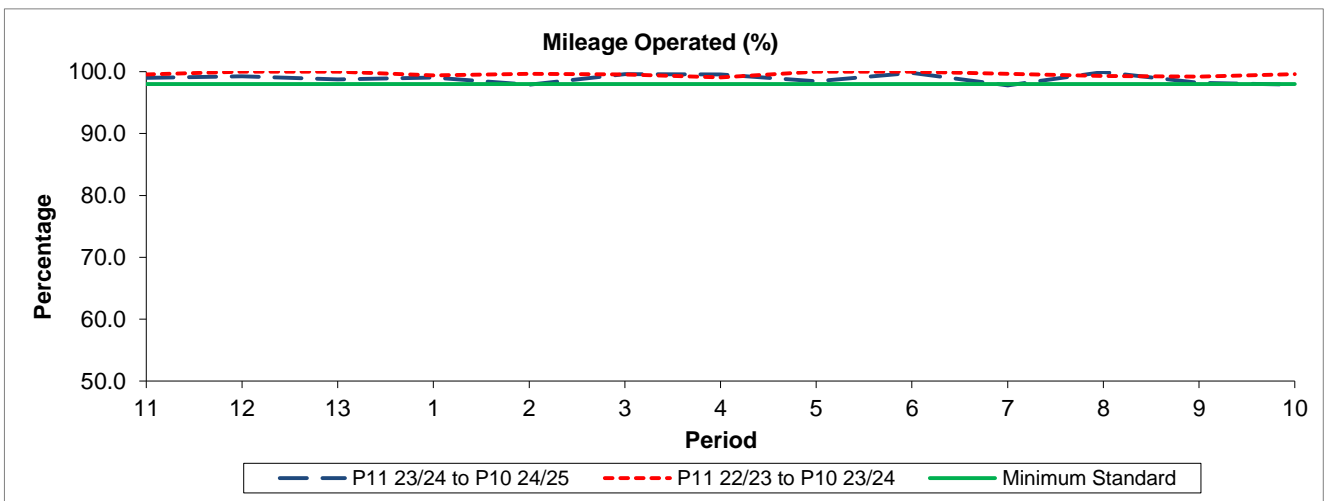
## Reliability Performance



Period	11	12	13	1	2	3	4	5	6	7	8	9	10
P11 23/24 to P10 24/25	79.38	84.35	85.19	88.78	84.62	87.94	84.01	89.85	88.10	94.09	91.52	84.72	73.81
P11 22/23 to P10 23/24	89.36	91.16	93.32	93.68	90.85	88.44	92.36	94.26	92.20	88.50	85.79	77.51	88.14
Minimum Standard	86.00	86.00	86.00	86.00	86.00	86.00	86.00	86.00	86.00	86.00	86.00	86.00	86.00

% On Time performance figures are based on four weeks data

## Mileage Performance



Period	11	12	13	1	2	3	4	5	6	7	8	9	10
P11 23/24 to P10 24/25	99.02	99.23	98.75	99.05	97.92	99.60	99.54	98.43	99.81	97.78	99.94	98.21	97.88
P11 22/23 to P10 23/24	99.54	100.00	100.00	99.41	99.66	99.56	99.07	100.00	100.00	99.67	99.30	99.18	99.61
Minimum Standard	98.00	98.00	98.00	98.00	98.00	98.00	98.00	98.00	98.00	98.00	98.00	98.00	98.00

Mileage Performance figures are based on four weeks data