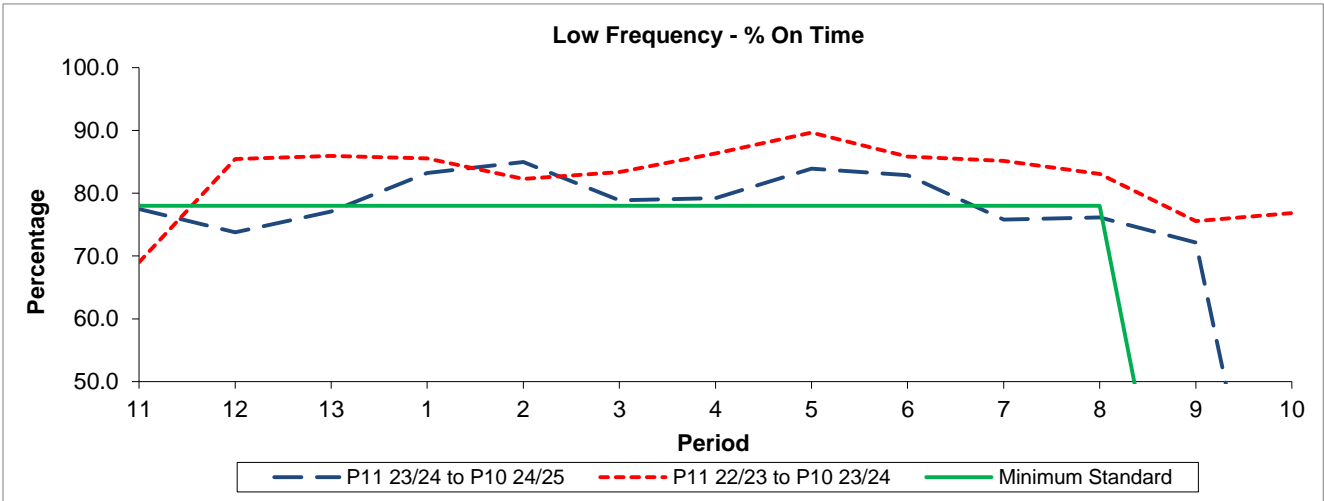


QSI & Mileage Performance Results

Route 370

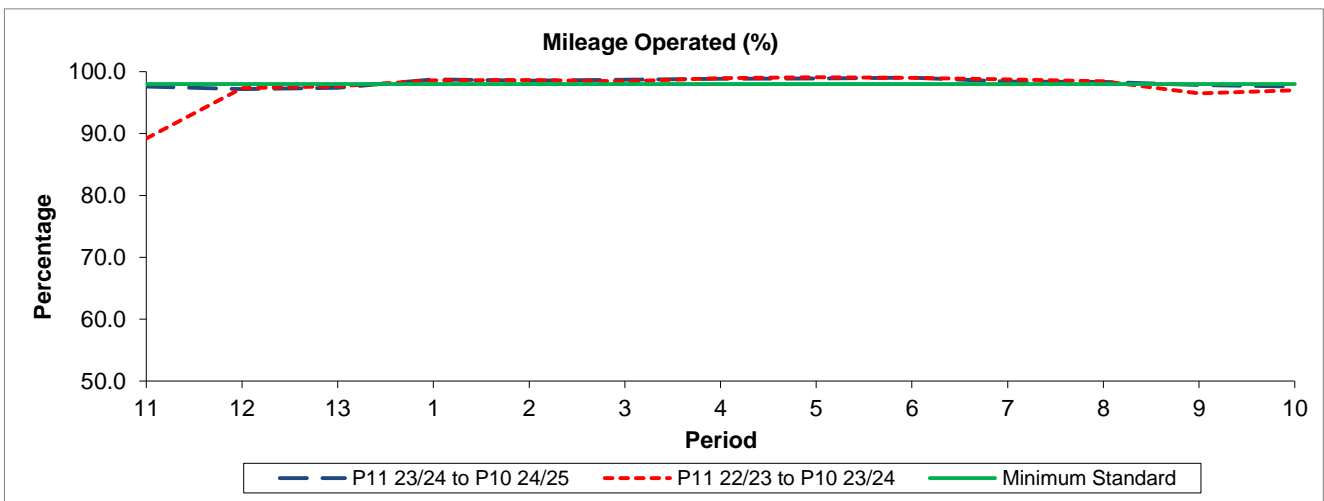
Reliability Performance



Period	11	12	13	1	2	3	4	5	6	7	8	9	10
P11 23/24 to P10 24/25	77.50	73.80	77.10	83.22	84.97	78.88	79.24	83.91	82.89	75.82	76.15	72.13	
P11 22/23 to P10 23/24	69.00	85.47	85.97	85.52	82.27	83.38	86.33	89.66	85.87	85.13	83.06	75.57	76.83
Minimum Standard	78.00	78.00	78.00	78.00	78.00	78.00	78.00	78.00	78.00	78.00	78.00	0.00	

% On Time performance figures are based on four weeks data

Mileage Performance



Period	11	12	13	1	2	3	4	5	6	7	8	9	10
P11 23/24 to P10 24/25	97.58	97.18	97.40	98.76	98.56	98.71	98.83	98.88	99.04	98.39	98.35	97.82	97.59
P11 22/23 to P10 23/24	89.20	97.35	97.67	98.58	98.63	98.46	98.92	99.10	98.98	98.75	98.47	96.47	96.99
Minimum Standard	98.00	98.00	98.00	98.00	98.00	98.00	98.00	98.00	98.00	98.00	98.00	98.00	98.00

Mileage Performance figures are based on four weeks data