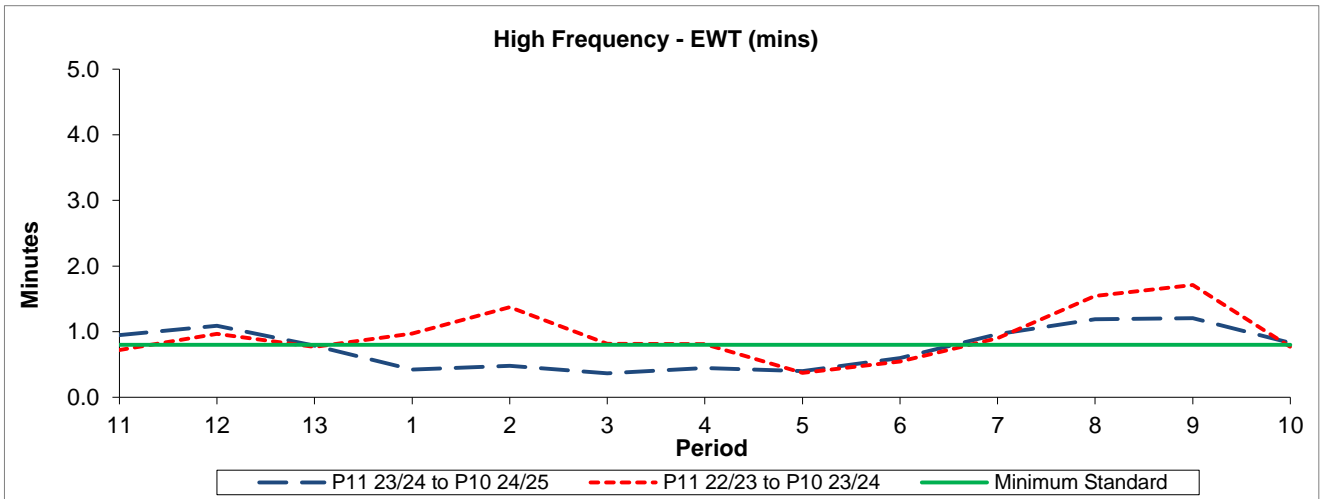


QSI & Mileage Performance Results

# Route 368

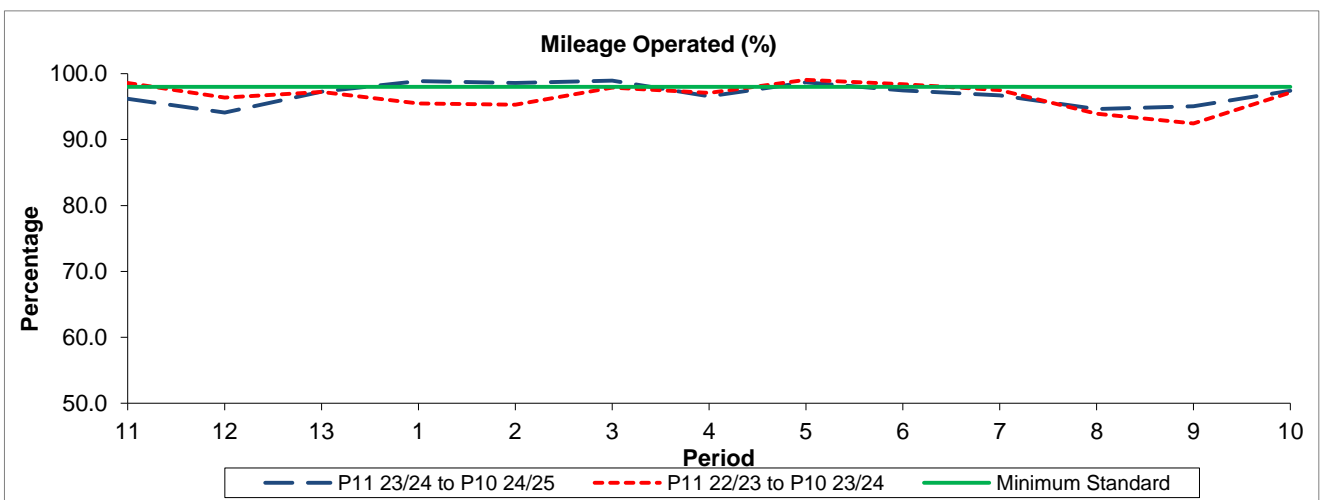
## Reliability Performance



Period	11	12	13	1	2	3	4	5	6	7	8	9	10
P11 23/24 to P10 24/25	0.95	1.09	0.79	0.42	0.48	0.37	0.45	0.40	0.60	0.96	1.19	1.21	0.83
P11 22/23 to P10 23/24	0.72	0.97	0.77	0.97	1.37	0.81	0.81	0.37	0.54	0.90	1.54	1.71	0.77
Minimum Standard	0.80	0.80	0.80	0.80	0.80	0.80	0.80	0.80	0.80	0.80	0.80	0.80	0.80

The EWT (mins) figures are based on four weeks data

## Mileage Performance



Period	11	12	13	1	2	3	4	5	6	7	8	9	10
P11 23/24 to P10 24/25	96.17	94.10	97.25	98.87	98.57	98.94	96.58	98.66	97.48	96.68	94.62	95.03	97.40
P11 22/23 to P10 23/24	98.58	96.39	97.24	95.48	95.28	97.87	97.07	99.06	98.40	97.50	93.95	92.45	97.13
Minimum Standard	98.00	98.00	98.00	98.00	98.00	98.00	98.00	98.00	98.00	98.00	98.00	98.00	98.00

Mileage Performance figures are based on four weeks data