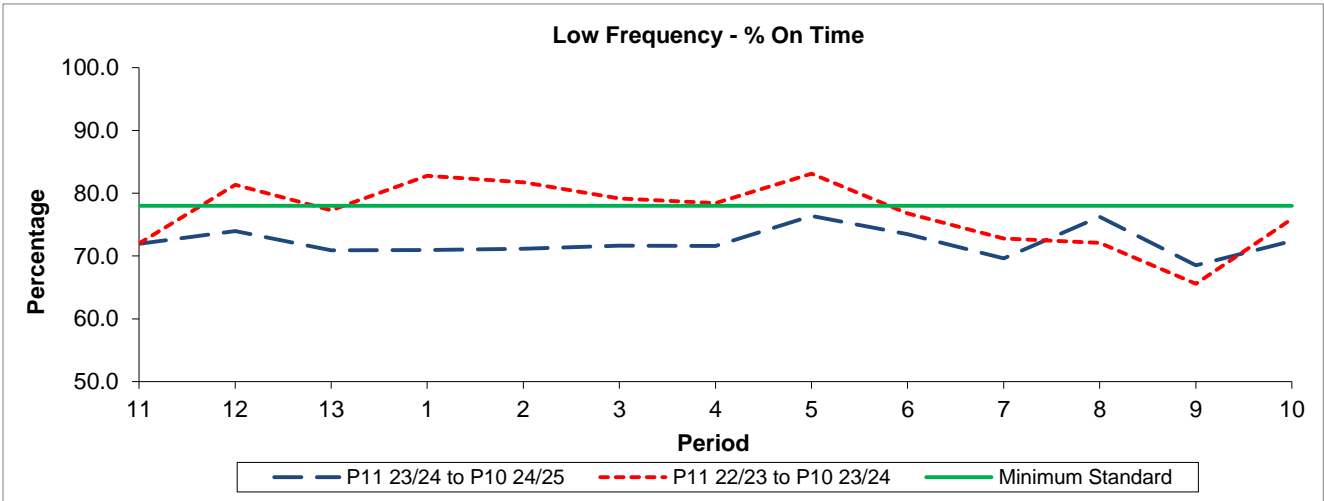


QSI & Mileage Performance Results

# Route 367

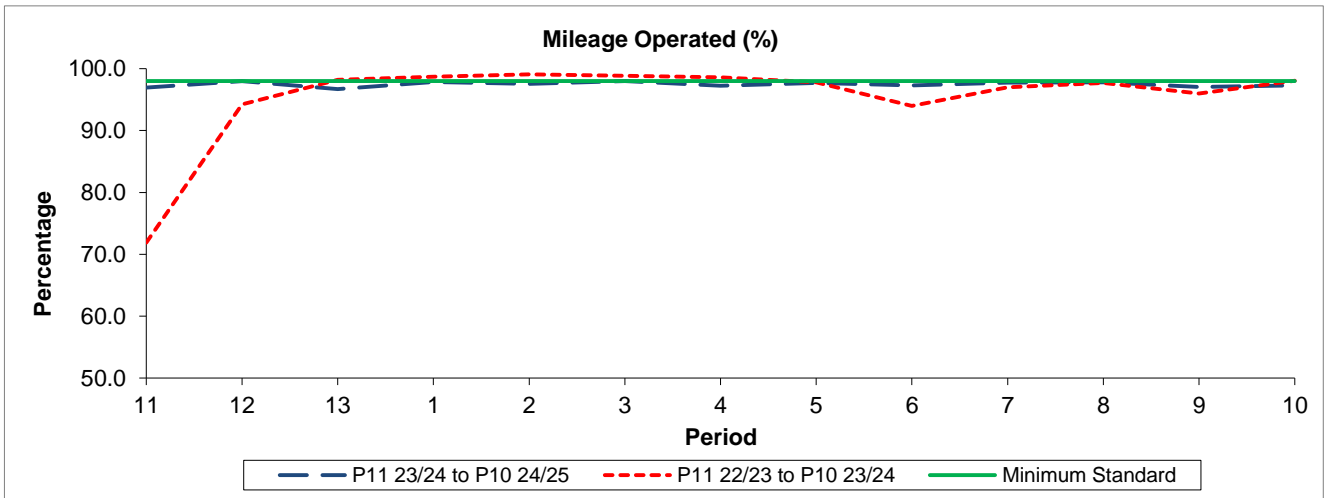
## Reliability Performance



Period	11	12	13	1	2	3	4	5	6	7	8	9	10
P11 23/24 to P10 24/25	71.95	73.99	70.89	70.94	71.14	71.66	71.59	76.38	73.50	69.61	76.25	68.52	72.37
P11 22/23 to P10 23/24	72.00	81.33	77.28	82.76	81.74	79.15	78.44	83.12	76.79	72.78	72.10	65.58	75.88
Minimum Standard	78.00	78.00	78.00	78.00	78.00	78.00	78.00	78.00	78.00	78.00	78.00	78.00	78.00

% On Time performance figures are based on four weeks data

## Mileage Performance



Period	11	12	13	1	2	3	4	5	6	7	8	9	10
P11 23/24 to P10 24/25	96.96	97.98	96.70	97.85	97.54	97.97	97.23	97.70	97.30	97.75	97.82	97.02	97.28
P11 22/23 to P10 23/24	71.89	94.23	98.20	98.71	99.08	98.84	98.57	97.82	93.96	97.01	97.69	96.00	98.05
Minimum Standard	98.00	98.00	98.00	98.00	98.00	98.00	98.00	98.00	98.00	98.00	98.00	98.00	98.00

Mileage Performance figures are based on four weeks data