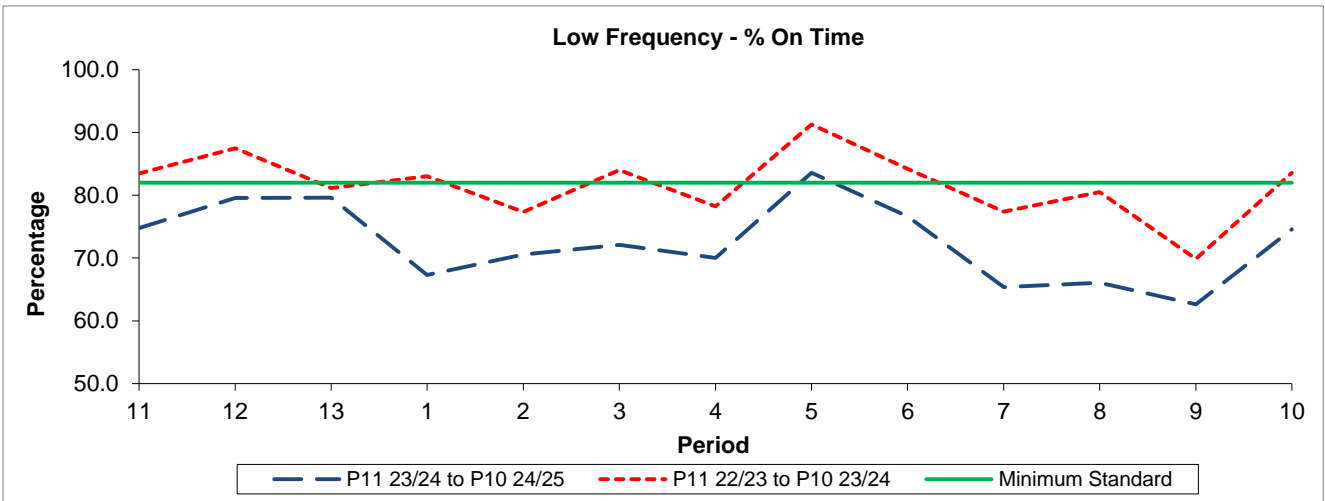


QSI & Mileage Performance Results

# Route 362

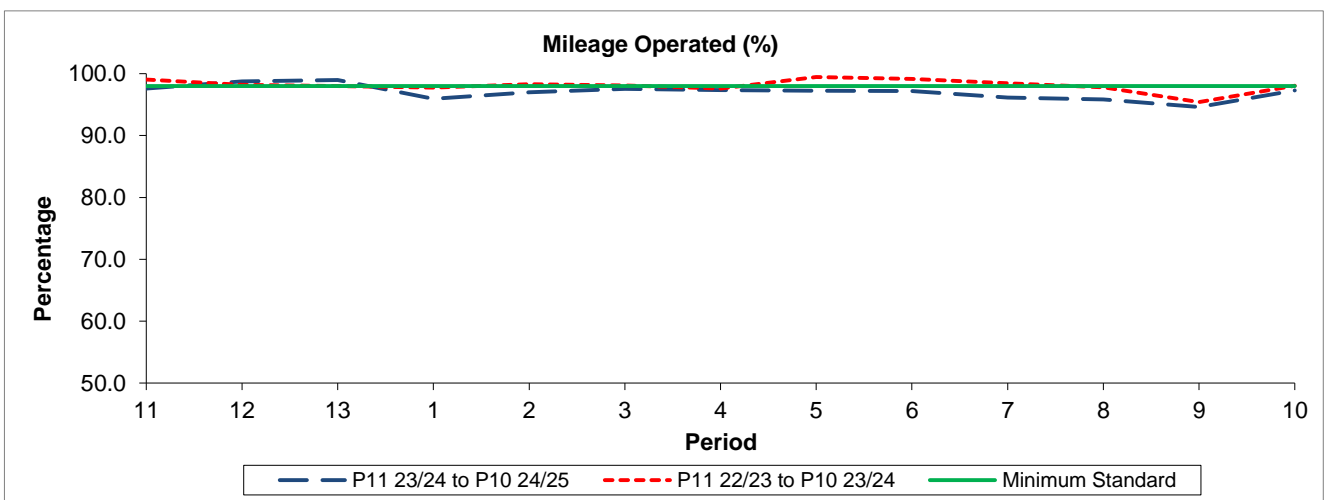
## Reliability Performance



| Period                 | 11    | 12    | 13    | 1     | 2     | 3     | 4     | 5     | 6     | 7     | 8     | 9     | 10    |
|------------------------|-------|-------|-------|-------|-------|-------|-------|-------|-------|-------|-------|-------|-------|
| P11 23/24 to P10 24/25 | 74.78 | 79.54 | 79.59 | 67.29 | 70.57 | 72.08 | 70.02 | 83.58 | 76.63 | 65.37 | 66.07 | 62.63 | 74.59 |
| P11 22/23 to P10 23/24 | 83.48 | 87.47 | 81.13 | 83.01 | 77.32 | 84.02 | 78.21 | 91.27 | 84.22 | 77.39 | 80.51 | 69.87 | 83.55 |
| Minimum Standard       | 82.00 | 82.00 | 82.00 | 82.00 | 82.00 | 82.00 | 82.00 | 82.00 | 82.00 | 82.00 | 82.00 | 82.00 | 82.00 |

% On Time performance figures are based on four weeks data

## Mileage Performance



| Period                 | 11    | 12    | 13    | 1     | 2     | 3     | 4     | 5     | 6     | 7     | 8     | 9     | 10    |
|------------------------|-------|-------|-------|-------|-------|-------|-------|-------|-------|-------|-------|-------|-------|
| P11 23/24 to P10 24/25 | 97.57 | 98.73 | 98.97 | 95.93 | 96.97 | 97.56 | 97.36 | 97.25 | 97.18 | 96.13 | 95.86 | 94.61 | 97.27 |
| P11 22/23 to P10 23/24 | 99.06 | 98.19 | 98.02 | 97.75 | 98.30 | 98.11 | 97.57 | 99.45 | 99.16 | 98.43 | 97.79 | 95.41 | 98.03 |
| Minimum Standard       | 98.00 | 98.00 | 98.00 | 98.00 | 98.00 | 98.00 | 98.00 | 98.00 | 98.00 | 98.00 | 98.00 | 98.00 | 98.00 |

Mileage Performance figures are based on four weeks data