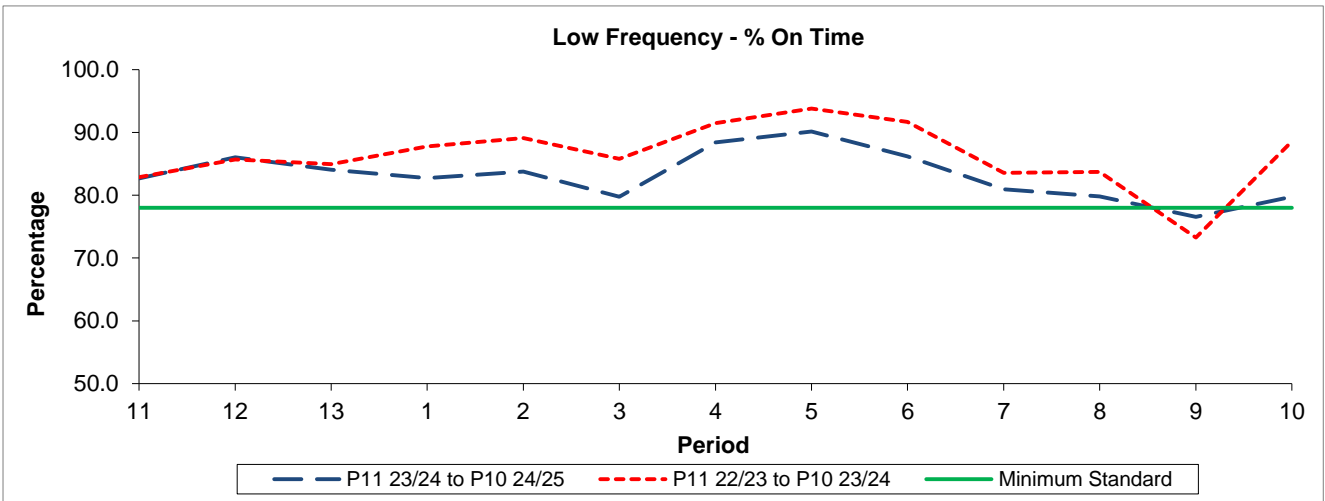


QSI & Mileage Performance Results

Route 357

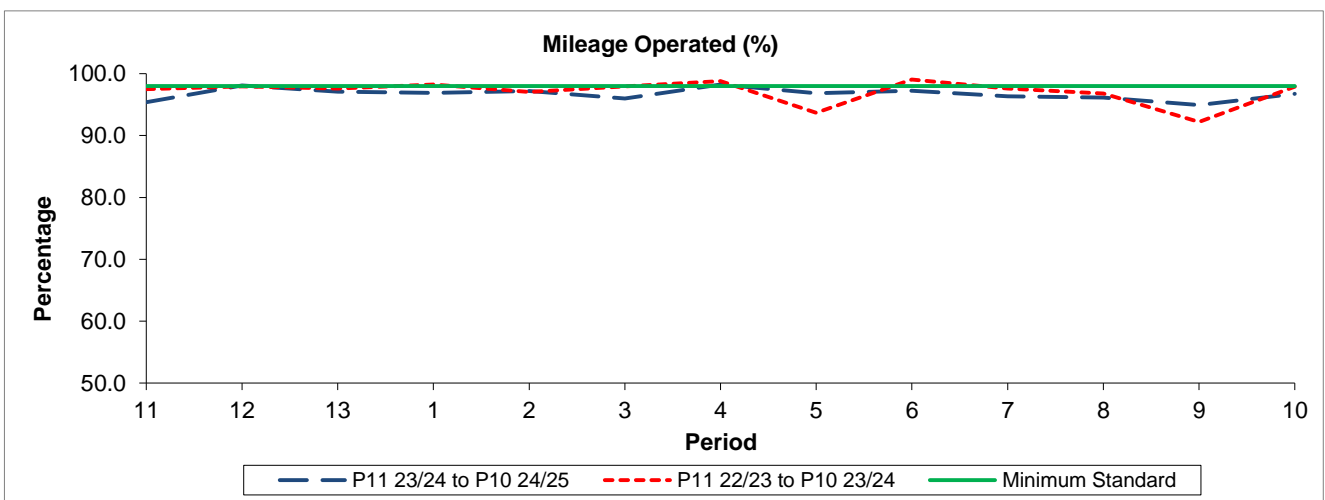
Reliability Performance



Period	11	12	13	1	2	3	4	5	6	7	8	9	10
P11 23/24 to P10 24/25	82.67	86.03	84.05	82.75	83.78	79.74	88.40	90.15	86.19	80.97	79.79	76.56	79.78
P11 22/23 to P10 23/24	82.88	85.69	84.96	87.77	89.11	85.79	91.49	93.80	91.66	83.57	83.72	73.26	88.56
Minimum Standard	78.00	78.00	78.00	78.00	78.00	78.00	78.00	78.00	78.00	78.00	78.00	78.00	78.00

% On Time performance figures are based on four weeks data

Mileage Performance



Period	11	12	13	1	2	3	4	5	6	7	8	9	10
P11 23/24 to P10 24/25	95.38	98.07	97.11	96.87	97.19	95.99	98.25	96.83	97.26	96.36	96.16	94.93	96.72
P11 22/23 to P10 23/24	97.47	97.95	97.57	98.24	97.06	97.93	98.81	93.67	99.05	97.60	96.78	92.20	97.87
Minimum Standard	98.00	98.00	98.00	98.00	98.00	98.00	98.00	98.00	98.00	98.00	98.00	98.00	98.00

Mileage Performance figures are based on four weeks data