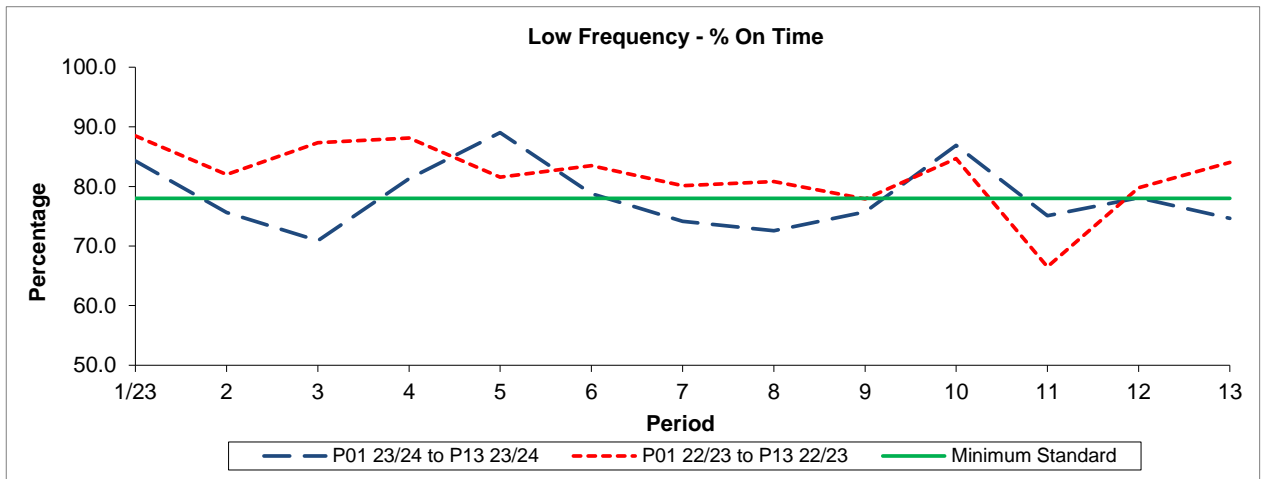


QSI & Mileage Performance Results

# Route 356

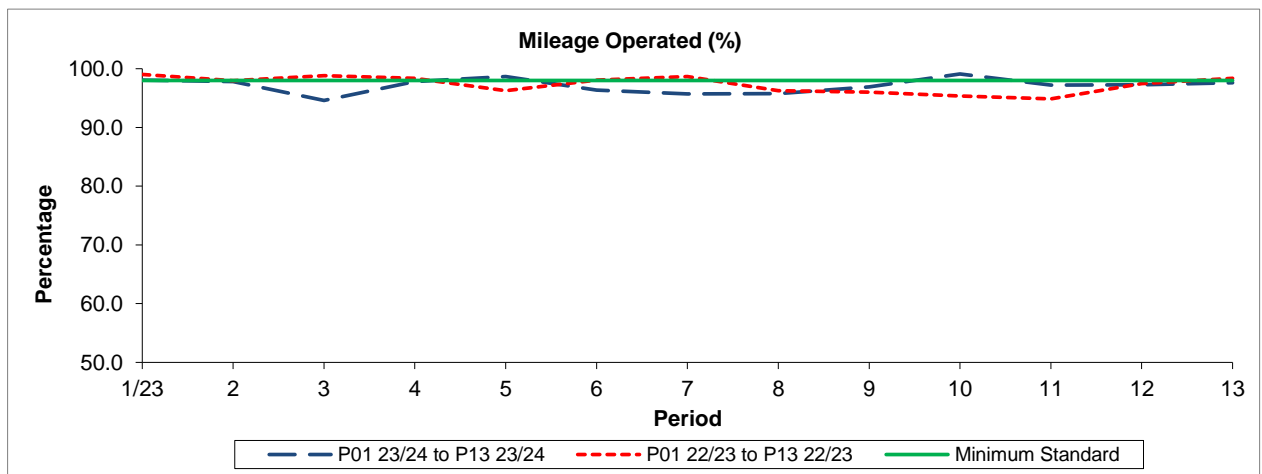
## Reliability Performance



Period	1/23	2	3	4	5	6	7	8	9	10	11	12	13
P01 23/24 to P13 23/24	84.30	75.62	70.90	81.30	89.03	78.81	74.14	72.57	75.73	86.90	75.09	78.09	74.62
P01 22/23 to P13 22/23	88.48	82.02	87.32	88.11	81.56	83.46	80.15	80.81	77.90	84.67	66.52	79.76	84.04
Minimum Standard	78.00	78.00	78.00	78.00	78.00	78.00	78.00	78.00	78.00	78.00	78.00	78.00	78.00

% On Time performance figures are based on four weeks data

## Mileage Performance



Period	1/23	2	3	4	5	6	7	8	9	10	11	12	13
P01 23/24 to P13 23/24	98.05	97.82	94.60	97.80	98.65	96.34	95.70	95.76	96.91	99.11	97.23	97.27	97.63
P01 22/23 to P13 22/23	99.02	97.98	98.81	98.39	96.26	98.08	98.66	96.28	96.01	95.34	94.87	97.44	98.38
Minimum Standard	98.00	98.00	98.00	98.00	98.00	98.00	98.00	98.00	98.00	98.00	98.00	98.00	98.00

Mileage Performance figures are based on four weeks data