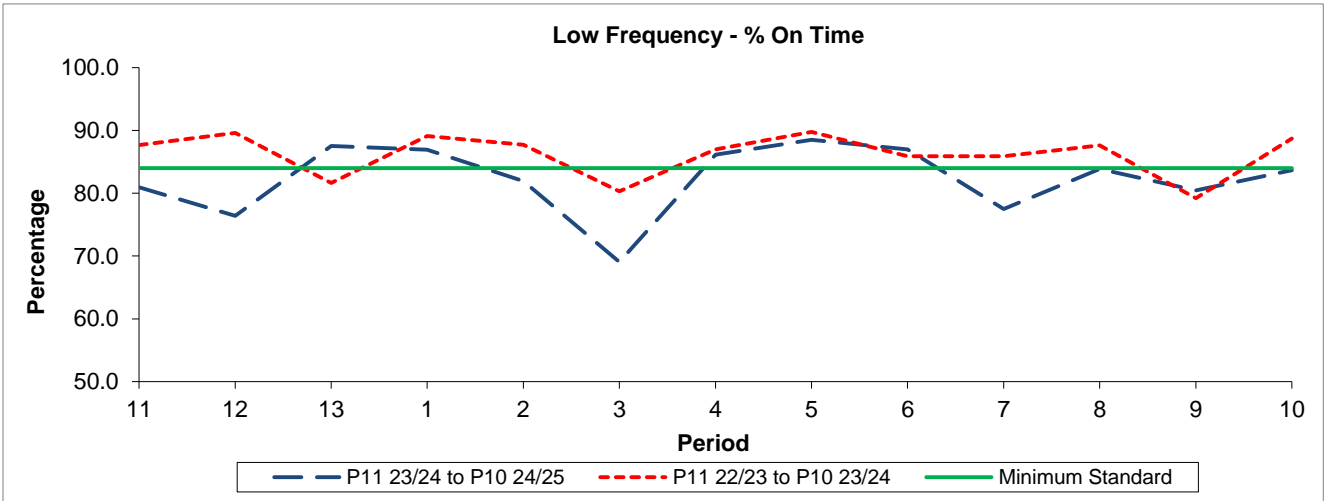


QSI & Mileage Performance Results

Route 353

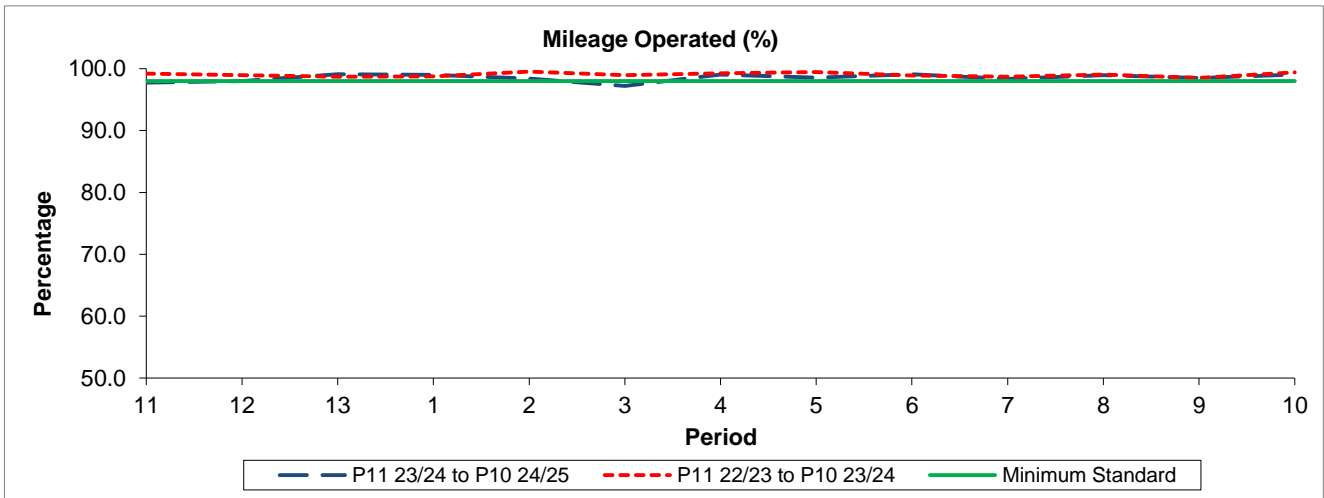
Reliability Performance



Period	11	12	13	1	2	3	4	5	6	7	8	9	10
P11 23/24 to P10 24/25	80.96	76.42	87.52	86.91	81.95	69.06	86.14	88.51	86.97	77.46	83.88	80.45	83.69
P11 22/23 to P10 23/24	87.68	89.62	81.65	89.12	87.70	80.33	87.00	89.76	85.90	85.87	87.63	79.21	88.72
Minimum Standard	84.00	84.00	84.00	84.00	84.00	84.00	84.00	84.00	84.00	84.00	84.00	84.00	84.00

% On Time performance figures are based on four weeks data

Mileage Performance



Period	11	12	13	1	2	3	4	5	6	7	8	9	10
P11 23/24 to P10 24/25	97.77	97.97	99.10	99.02	98.38	97.21	99.03	98.53	99.08	98.33	98.94	98.49	99.03
P11 22/23 to P10 23/24	99.18	98.95	98.69	98.77	99.52	98.96	99.23	99.43	98.91	98.70	99.07	98.51	99.42
Minimum Standard	98.00	98.00	98.00	98.00	98.00	98.00	98.00	98.00	98.00	98.00	98.00	98.00	98.00

Mileage Performance figures are based on four weeks data