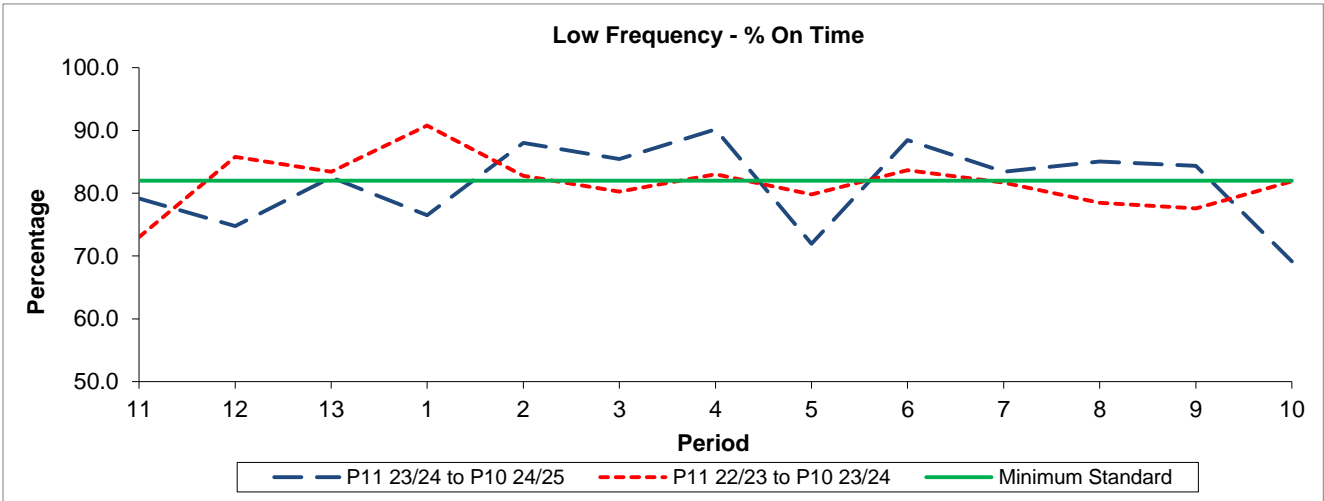


QSI & Mileage Performance Results

# Route 347

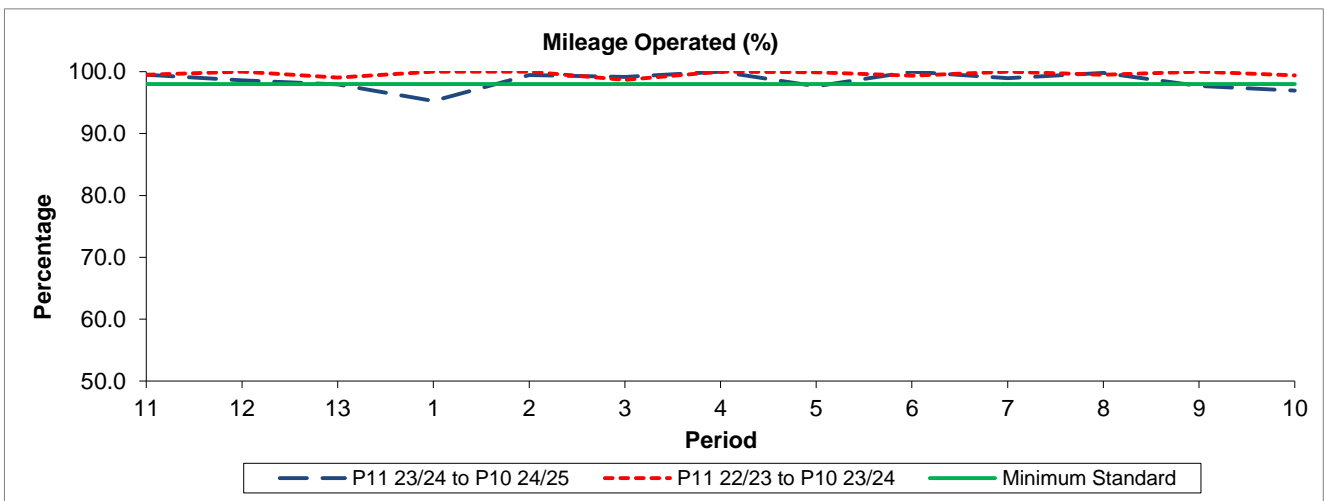
## Reliability Performance



Period	11	12	13	1	2	3	4	5	6	7	8	9	10
P11 23/24 to P10 24/25	79.19	74.78	82.55	76.49	88.02	85.45	90.17	71.96	88.48	83.44	85.04	84.34	69.15
P11 22/23 to P10 23/24	73.01	85.82	83.43	90.78	82.79	80.25	83.02	79.81	83.68	81.70	78.49	77.58	81.87
Minimum Standard	82.00	82.00	82.00	82.00	82.00	82.00	82.00	82.00	82.00	82.00	82.00	82.00	82.00

% On Time performance figures are based on four weeks data

## Mileage Performance



Period	11	12	13	1	2	3	4	5	6	7	8	9	10
P11 23/24 to P10 24/25	99.48	98.62	97.95	95.27	99.46	99.15	100.00	97.63	100.00	98.94	99.78	97.69	96.92
P11 22/23 to P10 23/24	99.48	100.00	99.04	100.00	100.00	98.67	100.00	99.89	99.33	100.00	99.52	100.00	99.40
Minimum Standard	98.00	98.00	98.00	98.00	98.00	98.00	98.00	98.00	98.00	98.00	98.00	98.00	98.00

Mileage Performance figures are based on four weeks data