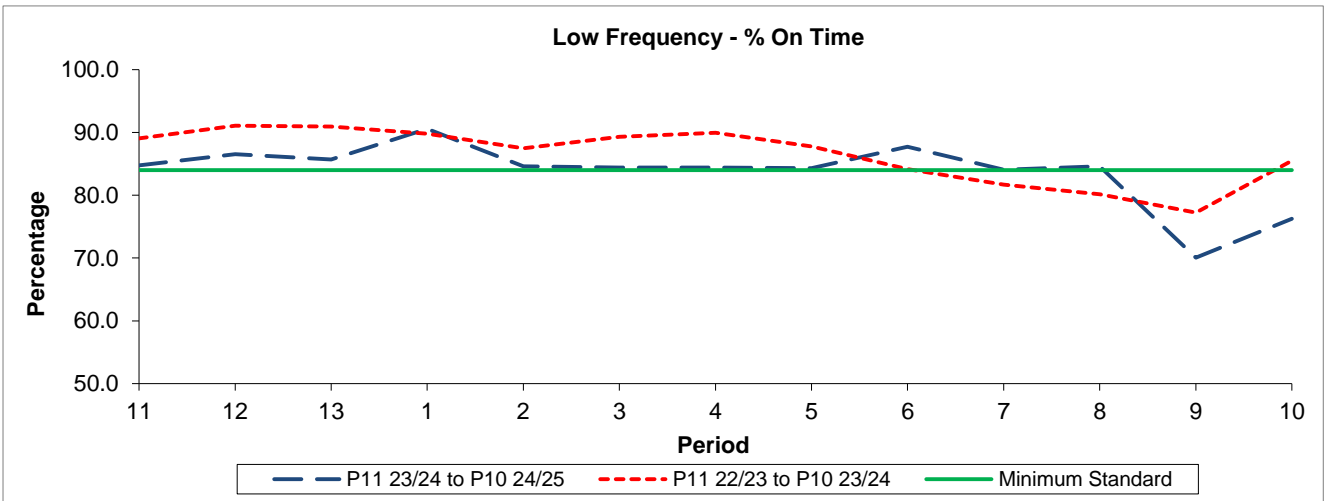


QSI & Mileage Performance Results

Route 339

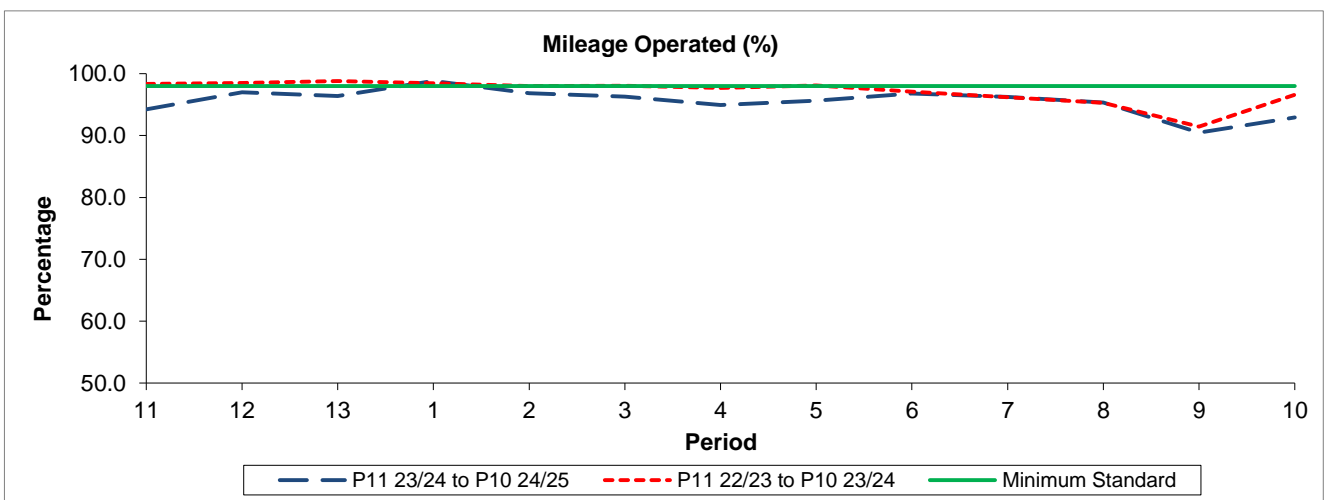
Reliability Performance



Period	11	12	13	1	2	3	4	5	6	7	8	9	10
P11 23/24 to P10 24/25	84.78	86.53	85.68	90.57	84.61	84.42	84.41	84.30	87.71	84.04	84.59	70.06	76.25
P11 22/23 to P10 23/24	89.08	91.07	90.94	89.81	87.49	89.28	89.93	87.77	84.16	81.68	80.14	77.23	85.48
Minimum Standard	84.00	84.00	84.00	84.00	84.00	84.00	84.00	84.00	84.00	84.00	84.00	84.00	84.00

% On Time performance figures are based on four weeks data

Mileage Performance



Period	11	12	13	1	2	3	4	5	6	7	8	9	10
P11 23/24 to P10 24/25	94.22	97.01	96.40	98.82	96.84	96.26	94.96	95.61	96.79	96.23	95.34	90.47	92.90
P11 22/23 to P10 23/24	98.34	98.49	98.80	98.45	97.99	98.02	97.69	98.10	97.07	96.18	95.29	91.44	96.60
Minimum Standard	98.00	98.00	98.00	98.00	98.00	98.00	98.00	98.00	98.00	98.00	98.00	98.00	98.00

Mileage Performance figures are based on four weeks data