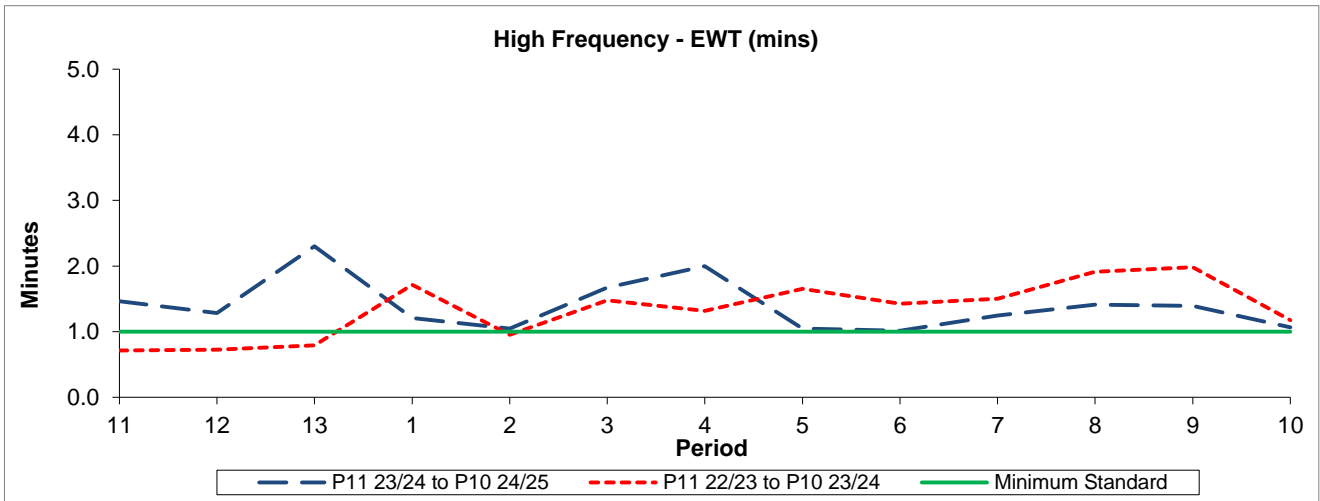


QSI & Mileage Performance Results

# Route 330

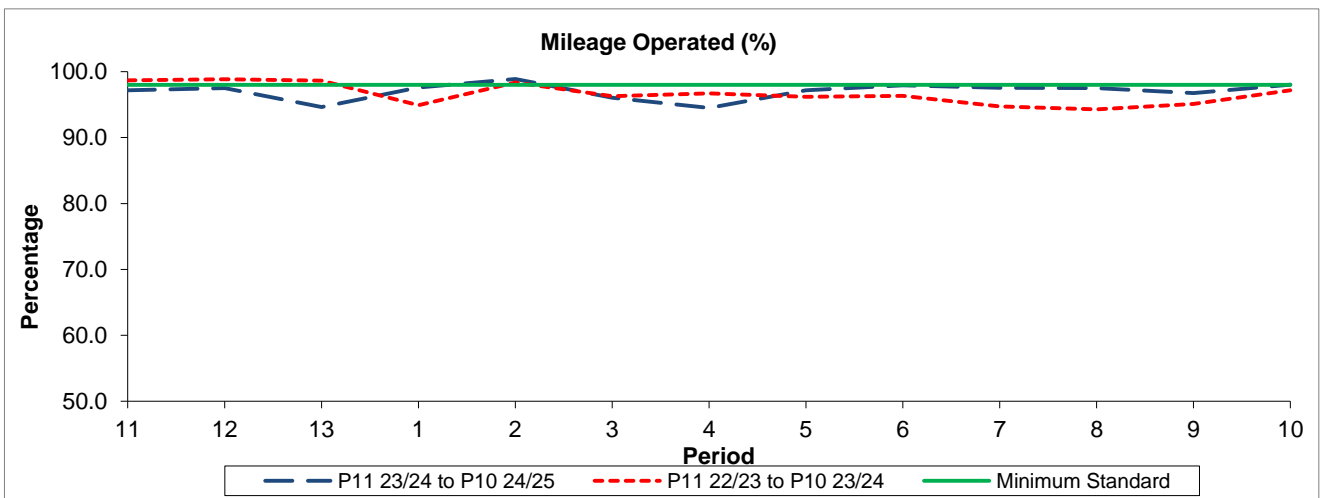
## Reliability Performance



Period	11	12	13	1	2	3	4	5	6	7	8	9	10
P11 23/24 to P10 24/25	1.46	1.29	2.30	1.21	1.05	1.67	2.00	1.05	1.01	1.25	1.41	1.39	1.07
P11 22/23 to P10 23/24	0.71	0.72	0.79	1.71	0.95	1.48	1.32	1.65	1.42	1.50	1.91	1.98	1.17
Minimum Standard	1.00	1.00	1.00	1.00	1.00	1.00	1.00	1.00	1.00	1.00	1.00	1.00	1.00

The EWT (mins) figures are based on four weeks data

## Mileage Performance



Period	11	12	13	1	2	3	4	5	6	7	8	9	10
P11 23/24 to P10 24/25	97.17	97.48	94.64	97.61	98.88	96.04	94.50	97.18	97.94	97.54	97.52	96.73	98.01
P11 22/23 to P10 23/24	98.67	98.85	98.64	94.93	98.34	96.30	96.69	96.17	96.34	94.71	94.28	95.11	97.18
Minimum Standard	98.00	98.00	98.00	98.00	98.00	98.00	98.00	98.00	98.00	98.00	98.00	98.00	98.00

Mileage Performance figures are based on four weeks data