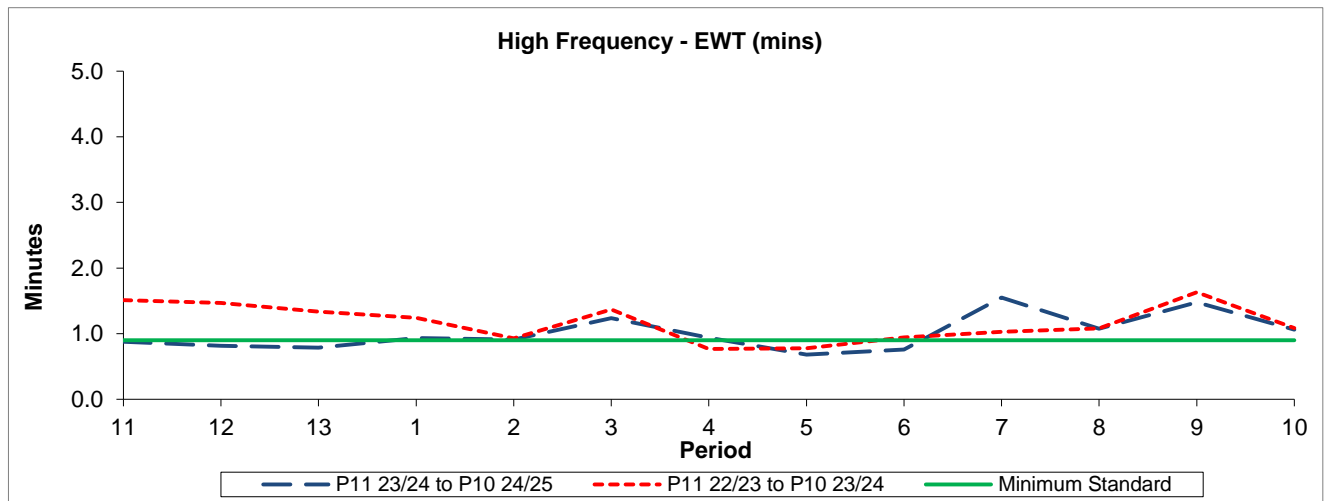


QSI & Mileage Performance Results

# Route 318

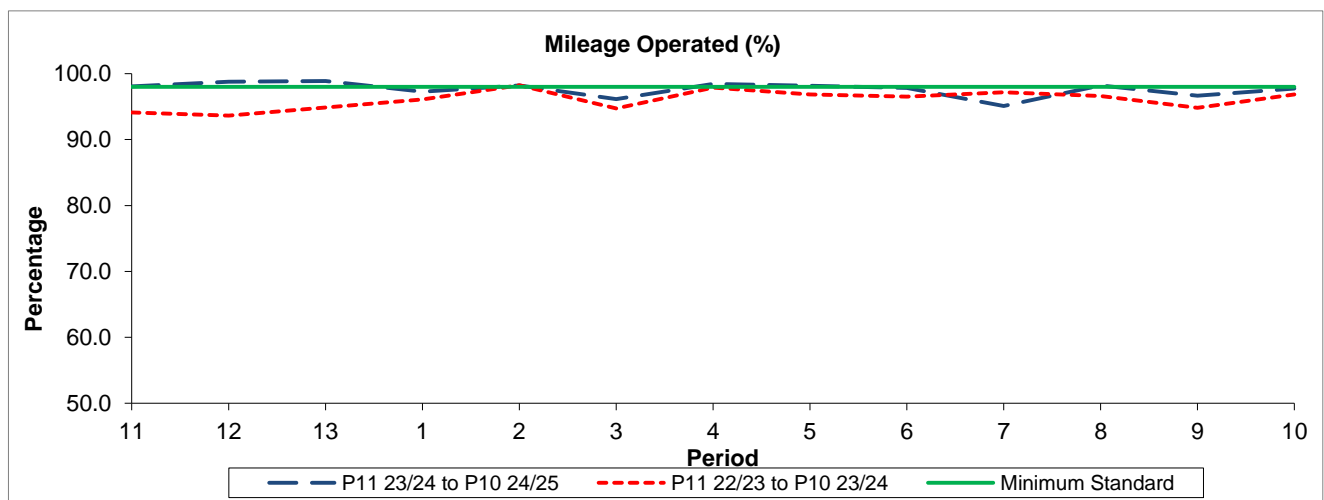
## Reliability Performance



Period	11	12	13	1	2	3	4	5	6	7	8	9	10
P11 23/24 to P10 24/25	0.88	0.81	0.79	0.93	0.91	1.24	0.94	0.68	0.76	1.55	1.08	1.48	1.06
P11 22/23 to P10 23/24	1.51	1.47	1.34	1.24	0.93	1.37	0.77	0.78	0.94	1.03	1.08	1.63	1.08
Minimum Standard	0.90	0.90	0.90	0.90	0.90	0.90	0.90	0.90	0.90	0.90	0.90	0.90	0.90

The EWT (mins) figures are based on four weeks data

## Mileage Performance



Period	11	12	13	1	2	3	4	5	6	7	8	9	10
P11 23/24 to P10 24/25	98.09	98.78	98.88	97.25	98.20	96.13	98.45	98.15	97.85	95.09	98.20	96.68	97.75
P11 22/23 to P10 23/24	94.11	93.64	94.86	96.11	98.24	94.74	97.86	96.86	96.51	97.16	96.61	94.83	96.84
Minimum Standard	98.00	98.00	98.00	98.00	98.00	98.00	98.00	98.00	98.00	98.00	98.00	98.00	98.00

Mileage Performance figures are based on four weeks data