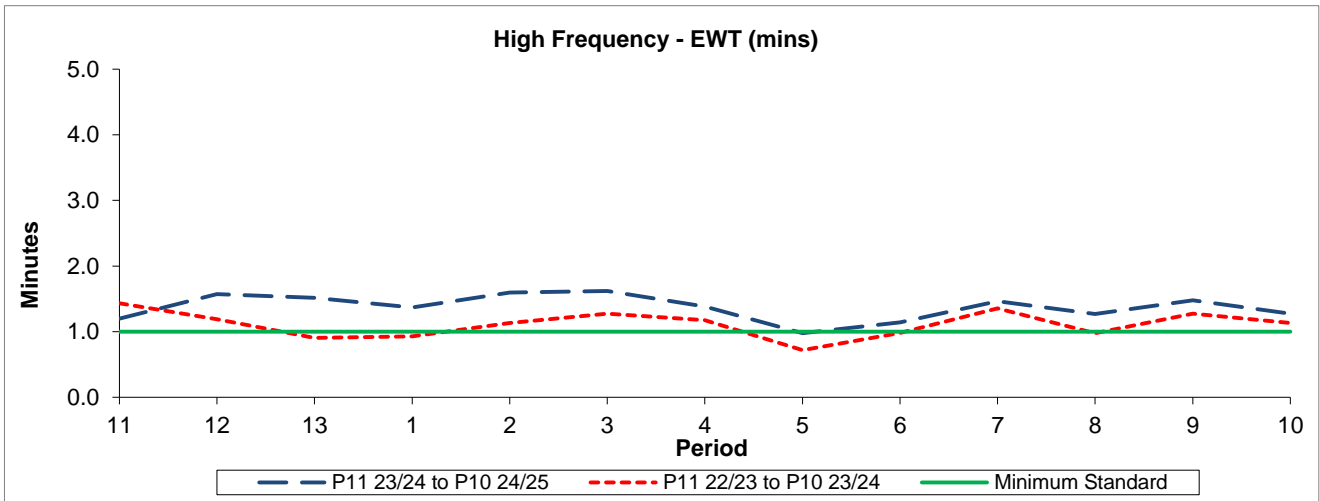


QSI & Mileage Performance Results

# Route 314

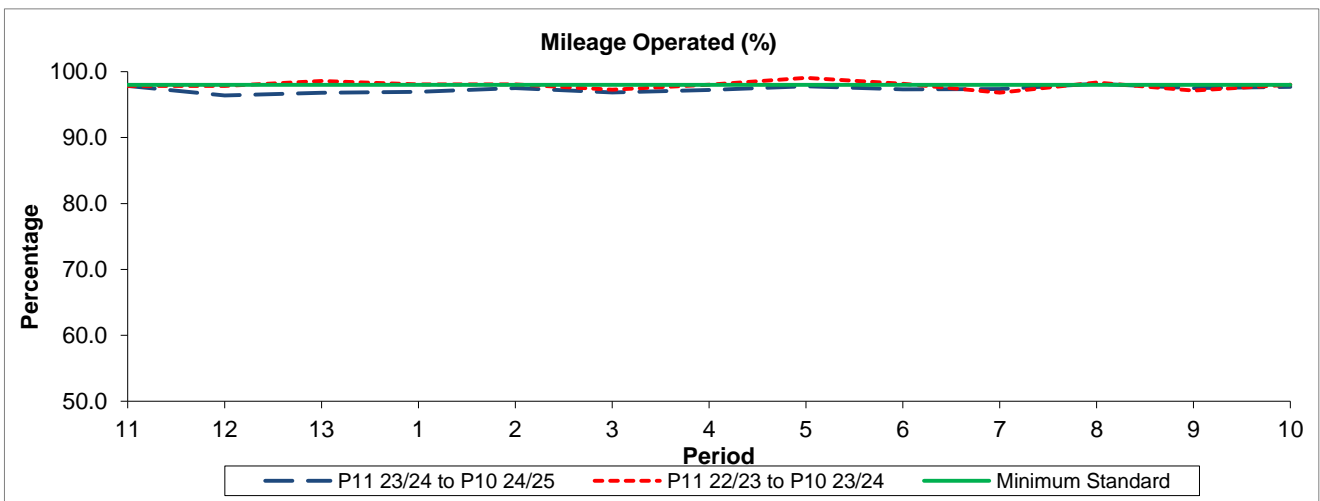
## Reliability Performance



Period	11	12	13	1	2	3	4	5	6	7	8	9	10
P11 23/24 to P10 24/25	1.20	1.57	1.52	1.37	1.60	1.62	1.38	0.98	1.14	1.46	1.27	1.48	1.28
P11 22/23 to P10 23/24	1.43	1.19	0.91	0.93	1.13	1.28	1.17	0.72	0.98	1.35	0.98	1.27	1.13
Minimum Standard	1.00	1.00	1.00	1.00	1.00	1.00	1.00	1.00	1.00	1.00	1.00	1.00	1.00

The EWT (mins) figures are based on four weeks data

## Mileage Performance



Period	11	12	13	1	2	3	4	5	6	7	8	9	10
P11 23/24 to P10 24/25	97.81	96.39	96.80	96.94	97.49	96.83	97.22	97.80	97.31	97.36	98.16	97.51	97.68
P11 22/23 to P10 23/24	97.83	97.83	98.58	98.05	98.09	97.27	98.03	99.06	98.16	96.82	98.37	97.12	98.02
Minimum Standard	98.00	98.00	98.00	98.00	98.00	98.00	98.00	98.00	98.00	98.00	98.00	98.00	98.00

Mileage Performance figures are based on four weeks data