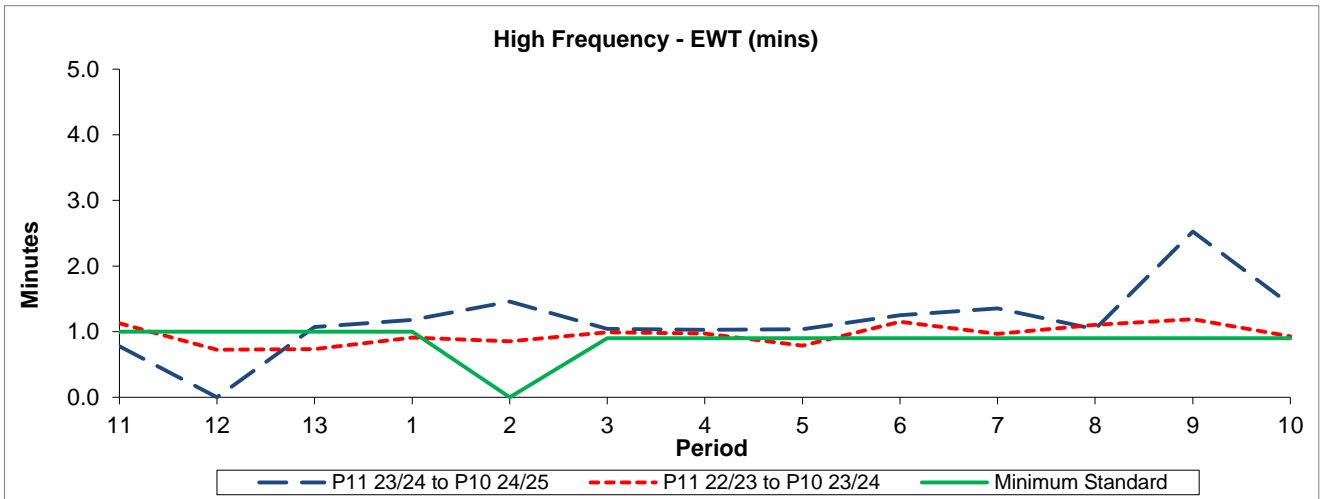


QSI & Mileage Performance Results

# Route 309

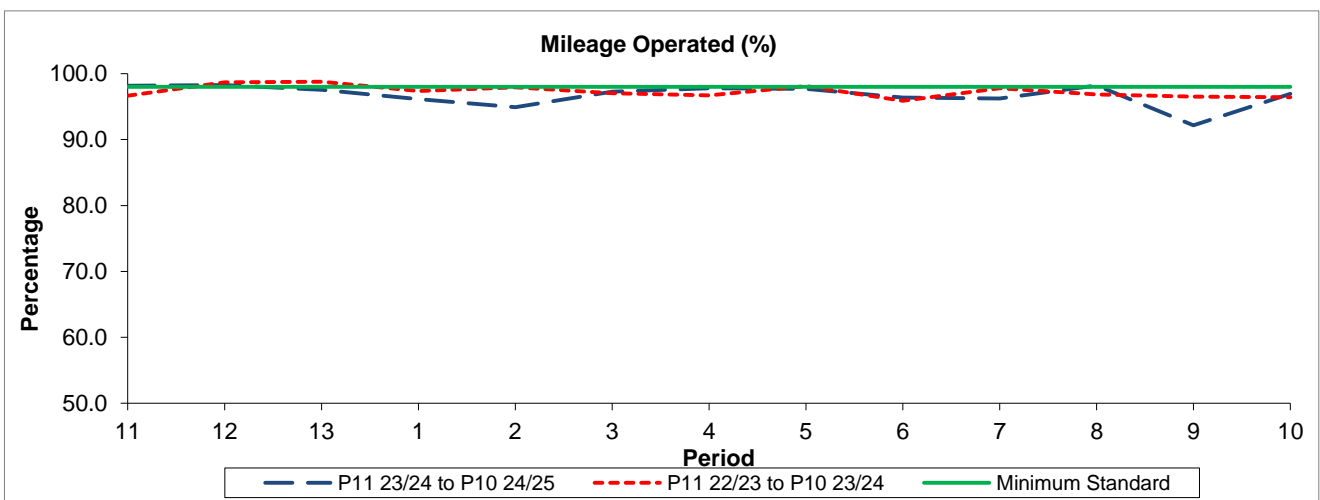
## Reliability Performance



Period	11	12	13	1	2	3	4	5	6	7	8	9	10
P11 23/24 to P10 24/25	0.78		1.07	1.18	1.46	1.04	1.03	1.04	1.25	1.36	1.04	2.53	1.41
P11 22/23 to P10 23/24	1.13	0.72	0.73	0.91	0.85	0.99	0.97	0.79	1.15	0.97	1.10	1.19	0.93
Minimum Standard	1.00	1.00	1.00	1.00		0.90	0.90	0.90	0.90	0.90	0.90	0.90	0.90

The EWT (mins) figures are based on four weeks data

## Mileage Performance



Period	11	12	13	1	2	3	4	5	6	7	8	9	10
P11 23/24 to P10 24/25	98.15	98.27	97.55	96.16	94.91	97.27	97.77	97.68	96.36	96.21	98.20	92.16	96.92
P11 22/23 to P10 23/24	96.67	98.66	98.78	97.35	97.94	97.02	96.72	98.11	95.89	97.77	96.87	96.54	96.44
Minimum Standard	98.00	98.00	98.00	98.00	98.00	98.00	98.00	98.00	98.00	98.00	98.00	98.00	98.00

Mileage Performance figures are based on four weeks data