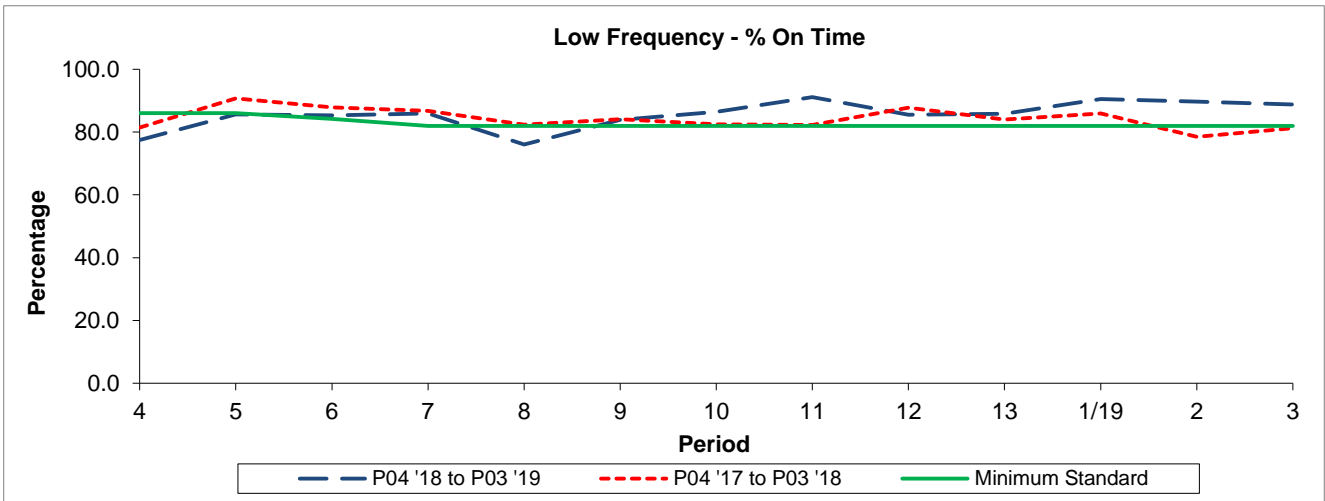


QSI & Mileage Performance Results

Route 303

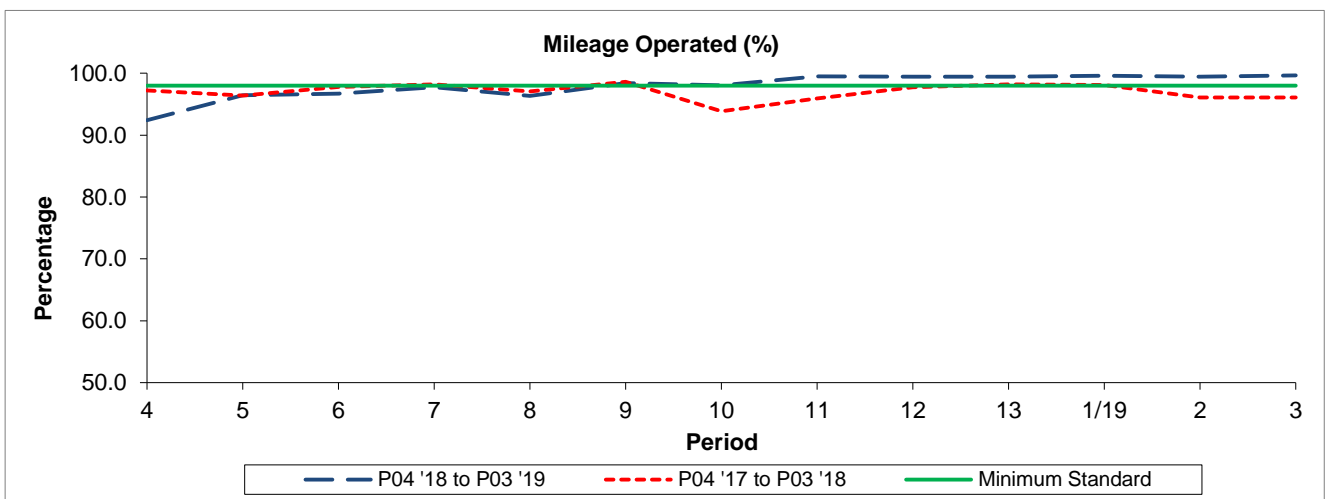
Reliability Performance



Period	4	5	6	7	8	9	10	11	12	13	1/19	2	3
P04 '18 to P03 '19	77.49	85.59	85.28	85.94	76.02	83.92	86.47	91.18	85.50	85.82	90.50	89.68	88.84
P04 '17 to P03 '18	81.48	90.70	87.84	86.80	82.36	84.10	82.52	82.26	87.77	83.96	85.98	78.47	81.22
Minimum Standard	86.00	86.00	84.18	82.00	82.00	82.00	82.00	82.00	82.00	82.00	82.00	82.00	82.00

% On Time performance figures are based on four weeks data

Mileage Performance



Period	4	5	6	7	8	9	10	11	12	13	1/19	2	3
P04 '18 to P03 '19	92.42	96.43	96.73	97.75	96.36	98.41	98.06	99.50	99.42	99.43	99.59	99.43	99.64
P04 '17 to P03 '18	97.25	96.37	97.79	98.22	97.04	98.61	93.86	95.94	97.73	98.20	98.12	96.08	96.10
Minimum Standard	98.00	98.00	98.00	98.00	98.00	98.00	98.00	98.00	98.00	98.00	98.00	98.00	98.00

Mileage Performance figures are based on four weeks data